

City of Fayetteville, Arkansas Fourth Quarter 2011 Management Report:

Elected Officials:

Mayor	Lioneld Jordan			
City Attorney	Kit Williams			
City Clerk	Sondra Smith			
City Council Members	Rhonda Adams	Brenda Boudreaux	Bobby Ferrell	Adella Gray
	Mark Kinion	Sarah Lewis	Matthew Petty	Justin Tennant
District Court Judge	Rudy Moore, Jr.			

Executive Staff:

David Dayringer	Fire Chief
Don Marr	Chief of Staff
Greg Tabor	Acting Police Chief
Lolly Greenwood	Interim Executive Director, Fayetteville Public Library

Senior Department Directors:

Paul A. Becker	Finance & Internal Services Director
Connie Edmonston	Parks & Recreation Department Director
Terry Gulley	Transportation Services Department Director
David Jurgens	Utilities Department Director
Jeremy Pate	Development Services Department Director
Lindsley Smith	Communications Director

Department Directors:

Vacant	Sustainability Department Director
Vicki Deaton	Internal Audit Department Director
Karen Minkel	Strategic Planning & Internal Consulting Director

Division Heads:

Ray Boudreaux	Airport Director
Chris Brown	City Engineer
Sharon Waters	Parking & Telecommunications Manager
Yolanda Fields	Community Services Director
Fritz Gisler	Government Channel Manager
Scott Huddleston	Information Technologies Department Director
Missy Leflar	Human Resources Department Director

Division Heads: (continued)

Marsha Hertweck	Accounting Director
Carrol Hill	Solid Waste Manager
Casey Jones	City Prosecutor
Rainy Laycox	Billing & Collections Manager
Dennis Pratt	Fleet Operations Superintendent
Larry Rennie	Building Maintenance Superintendent
Kevin Springer	Budget Director
Dena Stockalper	District Court Administrator
Kathy Stocker	Dispatch Manager
Peggy Vice	Purchasing Manager
William Winn	Water & Wastewater Operations Manager

CITY OF FAYETTEVILLE, ARKANSAS QUARTERLY MANAGEMENT REPORT

Fourth Quarter 2011

MAYOR

Lioneld Jordan

CITY COUNCIL

Adella Gray
Mark Kinion
Justin Tennant
Rhonda Adams

Ward 1, Position 1
Ward 2, Position 1
Ward 3, Position 1
Ward 4, Position 1

Brenda Thiel
Matthew Petty
Bobby Ferrell
Sarah Lewis

Ward 1, Position 2
Ward 2, Position 2
Ward 3, Position 2
Ward 4, Position 2

ELECTED OFFICIALS

Kit Williams - City Attorney
Sondra Smith - City Clerk/Treasurer
Rudy Moore, Jr. - District Court Judge

SENIOR DEPARTMENT DIRECTORS / EXECUTIVE STAFF

Paul A. Becker - Finance Director
Connie Edmonston - Parks & Recreation Director
David Jurgens - Utilities Director
Jeremy Pate - Development Services Director
Greg Tabor - Police Chief

David Dayringer - Fire Chief
Terry Gulley - Transportation Services Director
Don Marr - Chief of Staff
Lindsley Smith - Communications Director

2011 FOURTH QUARTER -- TABLE OF CONTENTS

I.	SPECIAL EVENT STATISTICS	1
II.	FINANCE	
	City Sales Tax	2
	City's Portion of the County Sales Tax	3
	Franchise Fees	4
	Parks Development HMR Tax	5
	State Turnback – General and Street Funds	6
	District Court Activity	7-8
III.	BUILDING RELATED ACTIVITIES	
	Building Permits	9
	Building Permit Fees Collected	10
	Code Compliance Service Requests	11
	Dwelling Units Approved	12
	Non Residential Square Footage Approved	13
IV.	ENTERPRISE ACTIVITIES	
	Airport.....	14-15
	Water & Sewer	16-21
	Solid Waste & Recycling	22-25
V.	TRANSPORTATION & RECREATION	
	Street Operations	26-27
	Trails	28
	Transportation Bond Program	29
	Parks & Recreation	30-31
	Library	32-33
VI.	PUBLIC SAFETY	
	Police	34-37
	Fire	38-39
	Animal Services	40
VII.	INTERNAL ACTIVITIES	
	Human Resources	41-42
VIII.	BUDGET ADMENDMENTS	
	Summary by Funding Source.....	43
	Detail by Fund	44-49

Special Events which affect the City:

During the fourth quarter of 2011, sales taxes continued to increase over projections. Year-to-date gains for the General Fund combined sales taxes were approximately \$1,195,000. Based on the 2010 census Fayetteville receives a smaller portion of the County sales tax distributions because of Springdale's dramatic population growth. However, county sales taxes were still 2.86% over prior year.

Year-to-date building permits exceeded budget projections by approximately \$110,000 primarily because of permitting related to new construction activity at the Fayetteville high school.

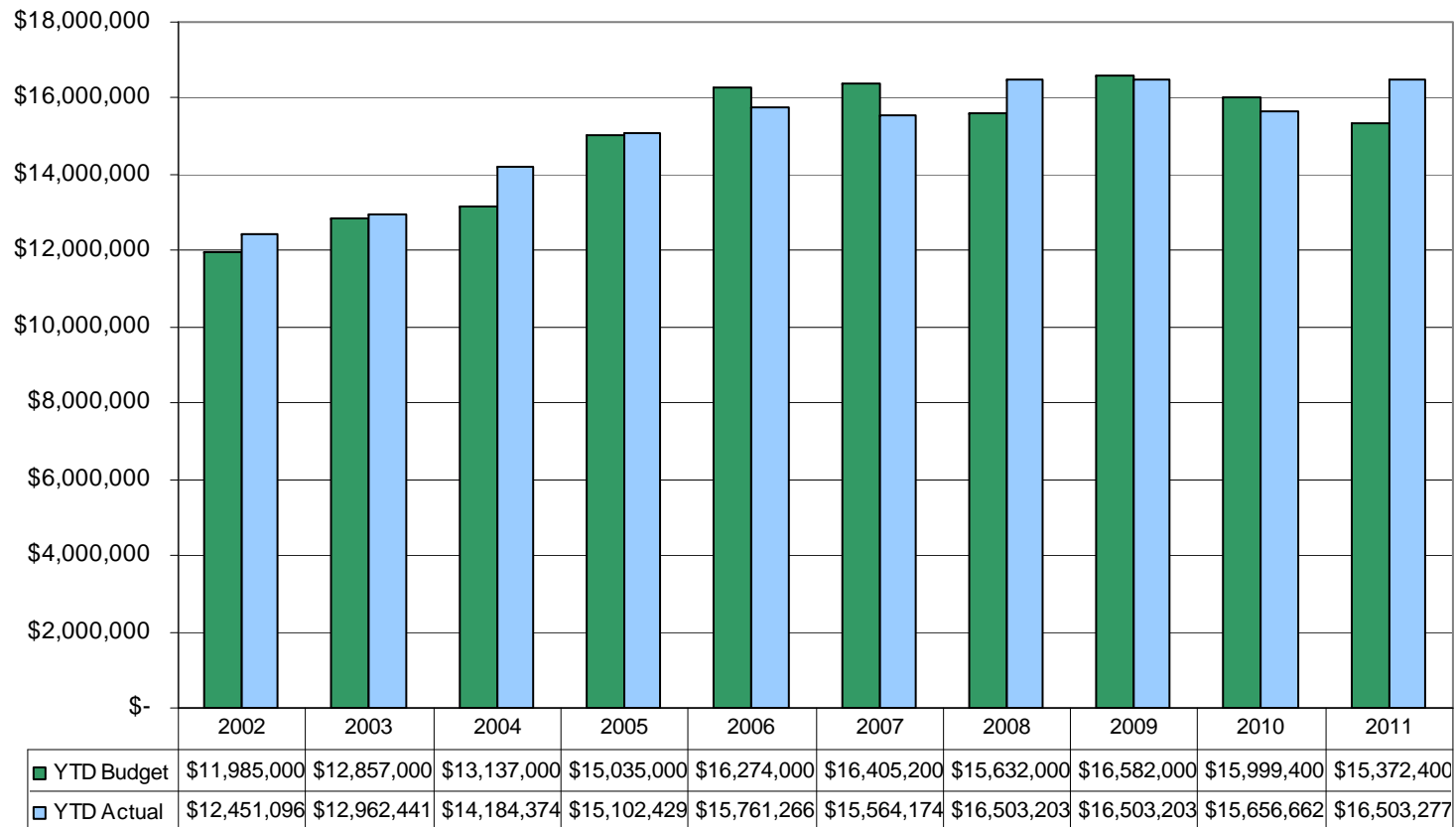
For project updates:

Transportation Bond Issue:

http://www.accessfayetteville.org/government/projects/Transportation_Improvement_Bond_Program/index.cfm

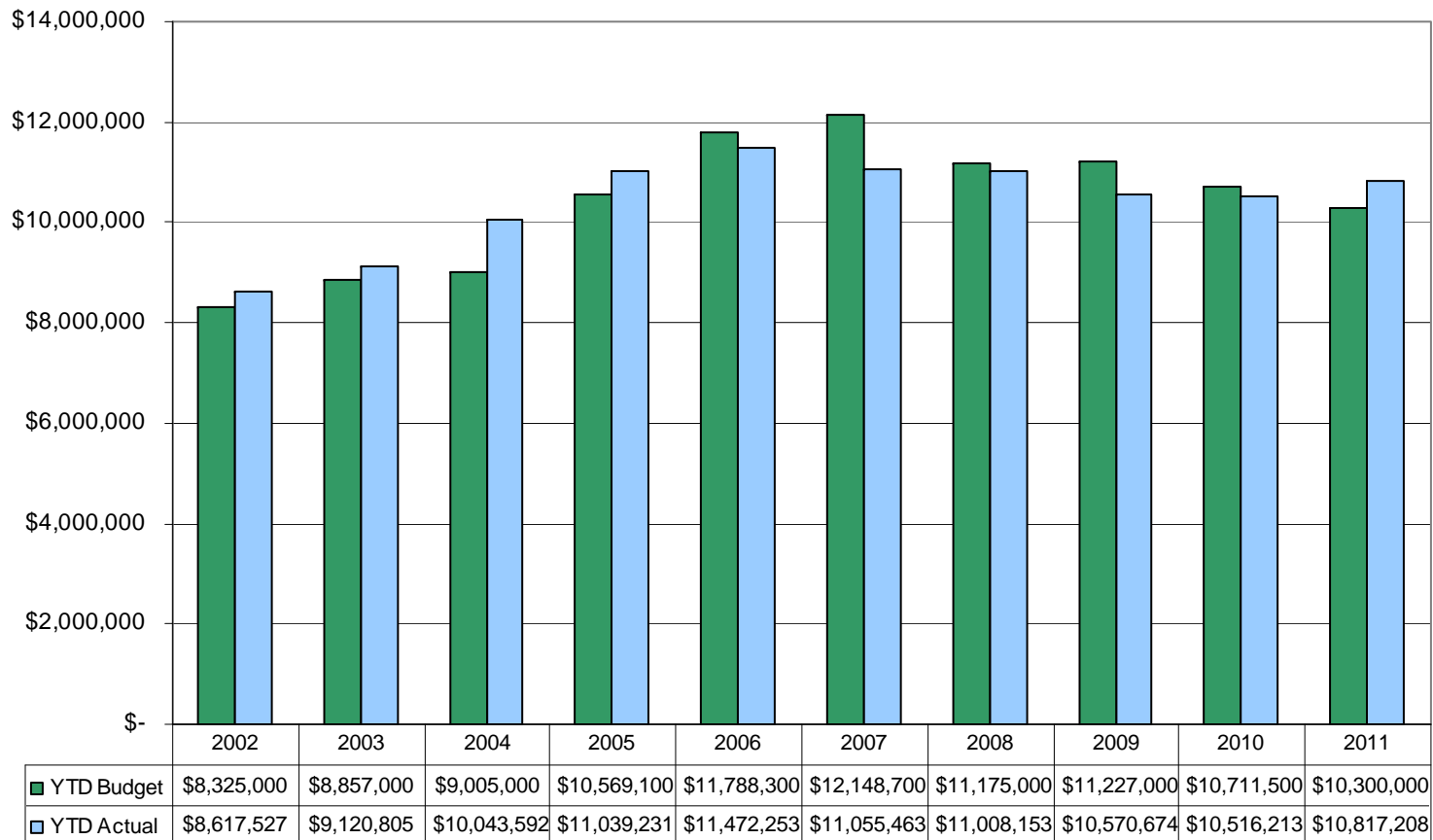
Comment: City sales tax collections for the year were up 5.4% compared to last year. This is a \$1,130,877 increase over budget.

City Sales Tax Adopted Budgeted Revenues Compared to Actual Collections Year-to-Date



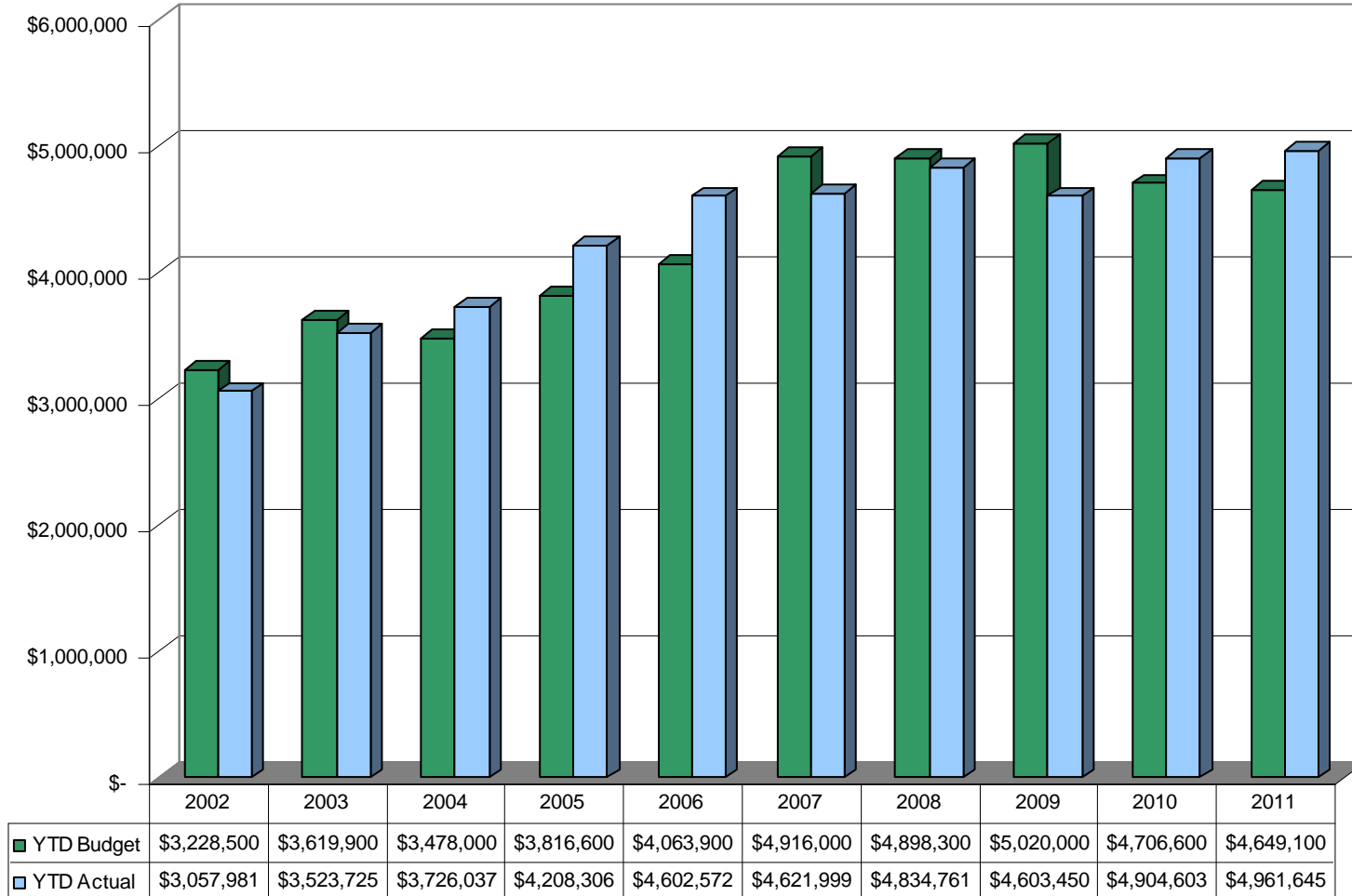
Comment: Year to date, the City's portion of county sales tax was up 5% compared to budget but up only 2.8% compared to last year. The City portion of county sales tax was reduced by the 2010 census.

City's Portion of the County Sales Tax Adopted Budgeted Revenues Compared to Actual Collections Year-to-Date



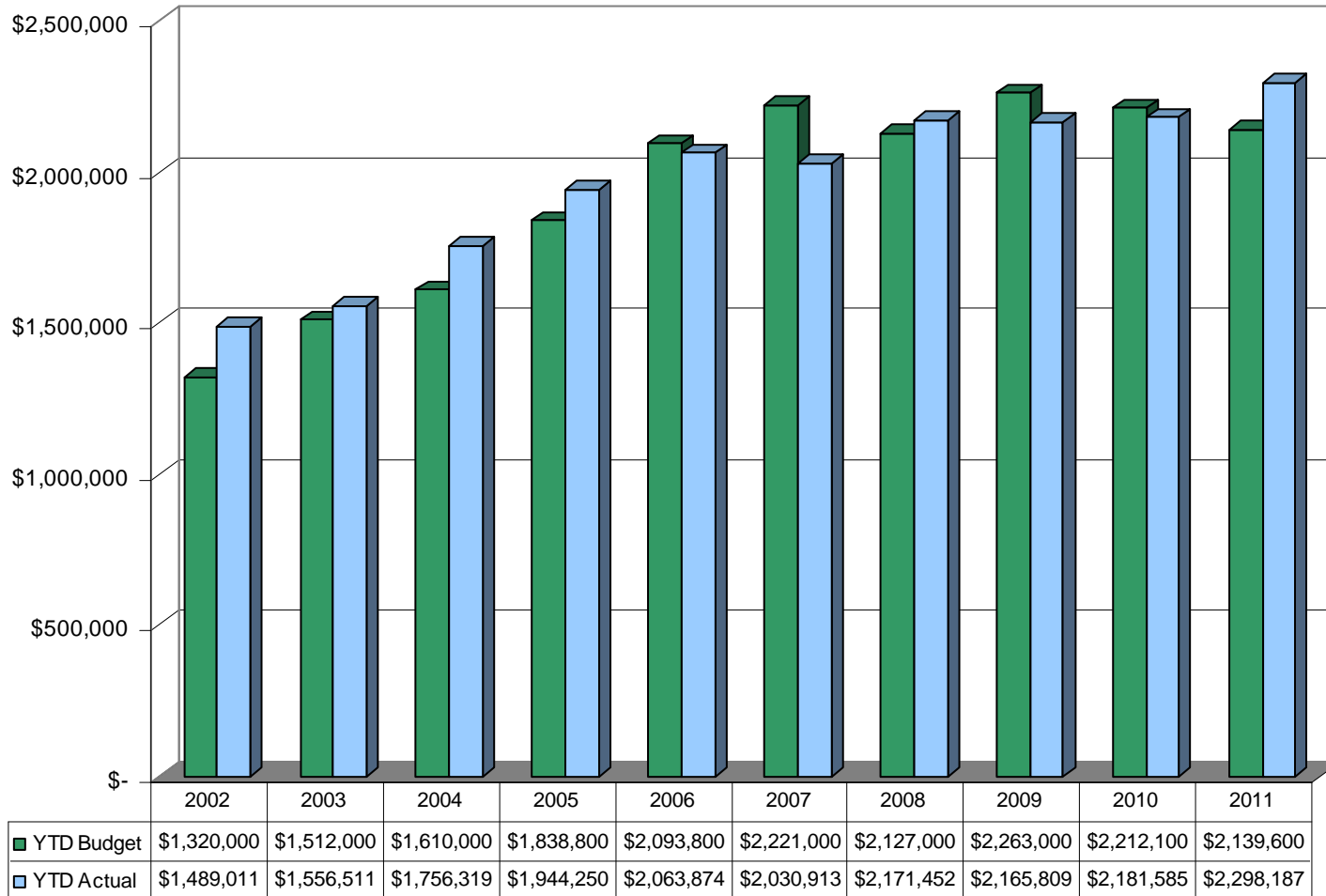
Comment: Franchise fee receipts were up 1.1% over prior year. This was 6.7% over budget.

Franchise Fees



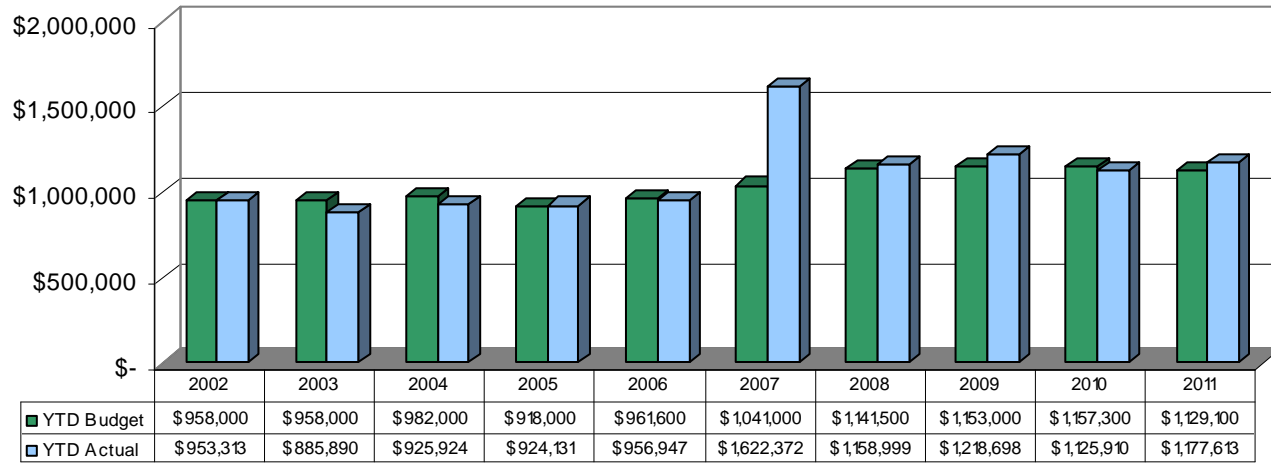
Comment: HMR taxes were 5.3% over last year. This was 7.4% over budget.

Parks Development HMR Tax

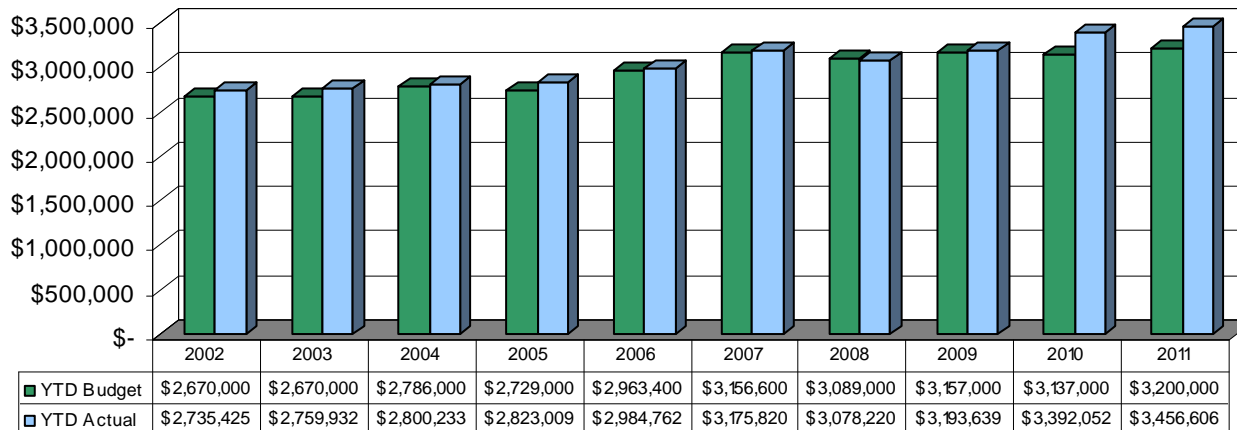


Comment: State Turnback was 4.6% over last year for General Fund and 1.9% for Street Turnback. Turnback receipts also exceed budget in both cases.

State Turnback - General Fund



State Turnback - Street Fund



Comment:

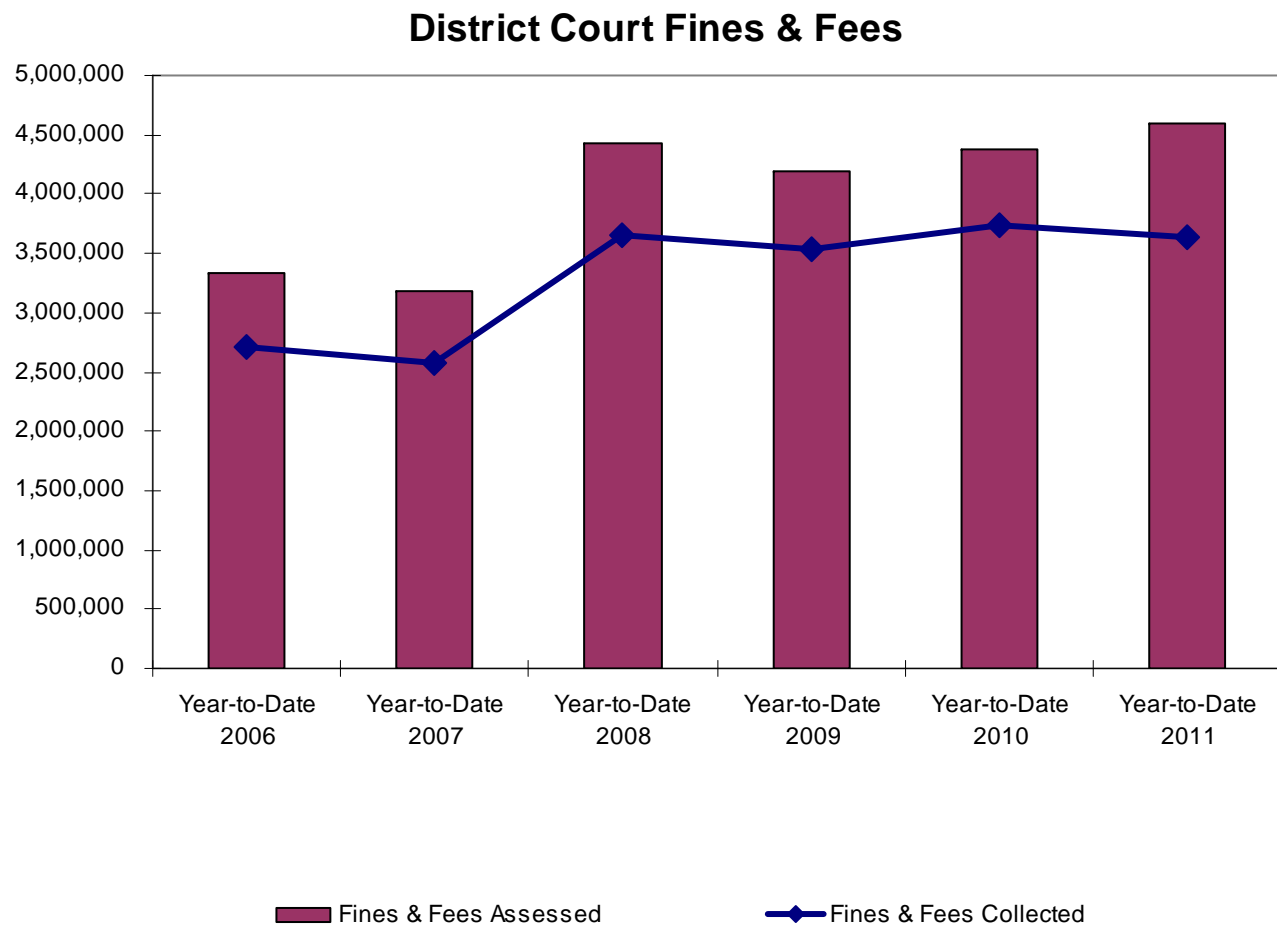
District Court Cases

	2006	2007	2008	2009	2010	2011
	Year-to-Date	Year-to-Date	Year-to-Date	Year-to-Date	Year-to-Date	Year-to-Date
Criminal						
Cases Filed	27,070	29,974	31,388	29,786	28,884	26,274
Cases Adjudicated	22,280	25,801	38,981	37,210	34,927	31,969
Probation						
Interviews Conducted	710	621	701	1,607	1,303	620
Persons / Hours of Public Service Assigned	131 / 5,388	104 / 2,519	165 / 3,322	180 / 9,786	666 / 5,163	319 / 3,694
Small Claims						
Cases Filed	1,779	2,096	2,383	2,193	2,764	3,174

District Court Fines & Fees

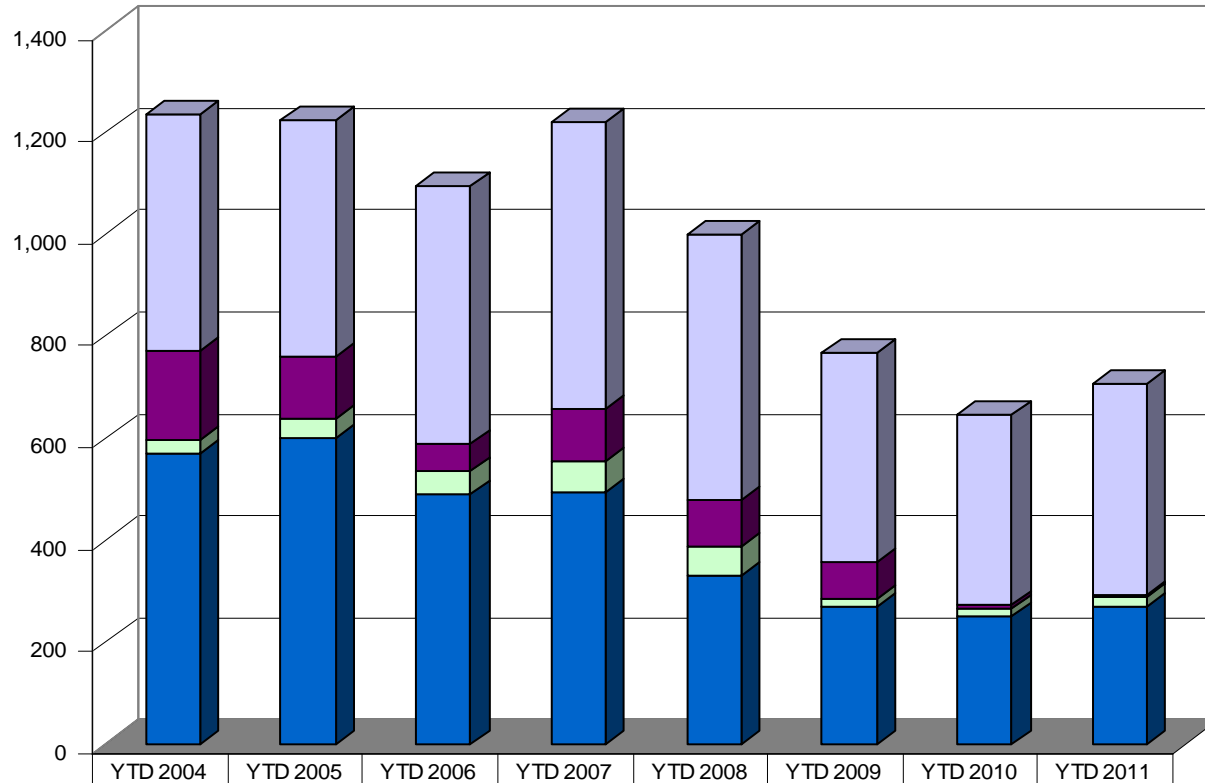
	2006	2007	2008	2009	2010	2011
	Year-to-Date	Year-to-Date	Year-to-Date	Year-to-Date	Year-to-Date	Year-to-Date
Fines & Fees Assessed	3,338,560	3,190,212	4,429,742	4,195,276	4,370,292	4,593,832
Fines & Fees Collected	2,714,239	2,578,934	3,655,037	3,529,256	3,734,399	3,642,965
Fines & Fees Uncollected	624,321	611,278	774,705	666,020	635,893	950,867
% of Fees Collected	81%	81%	83%	84%	85%	79%

Comment:



Comment: Building permits issued are slightly up compared to 2010.

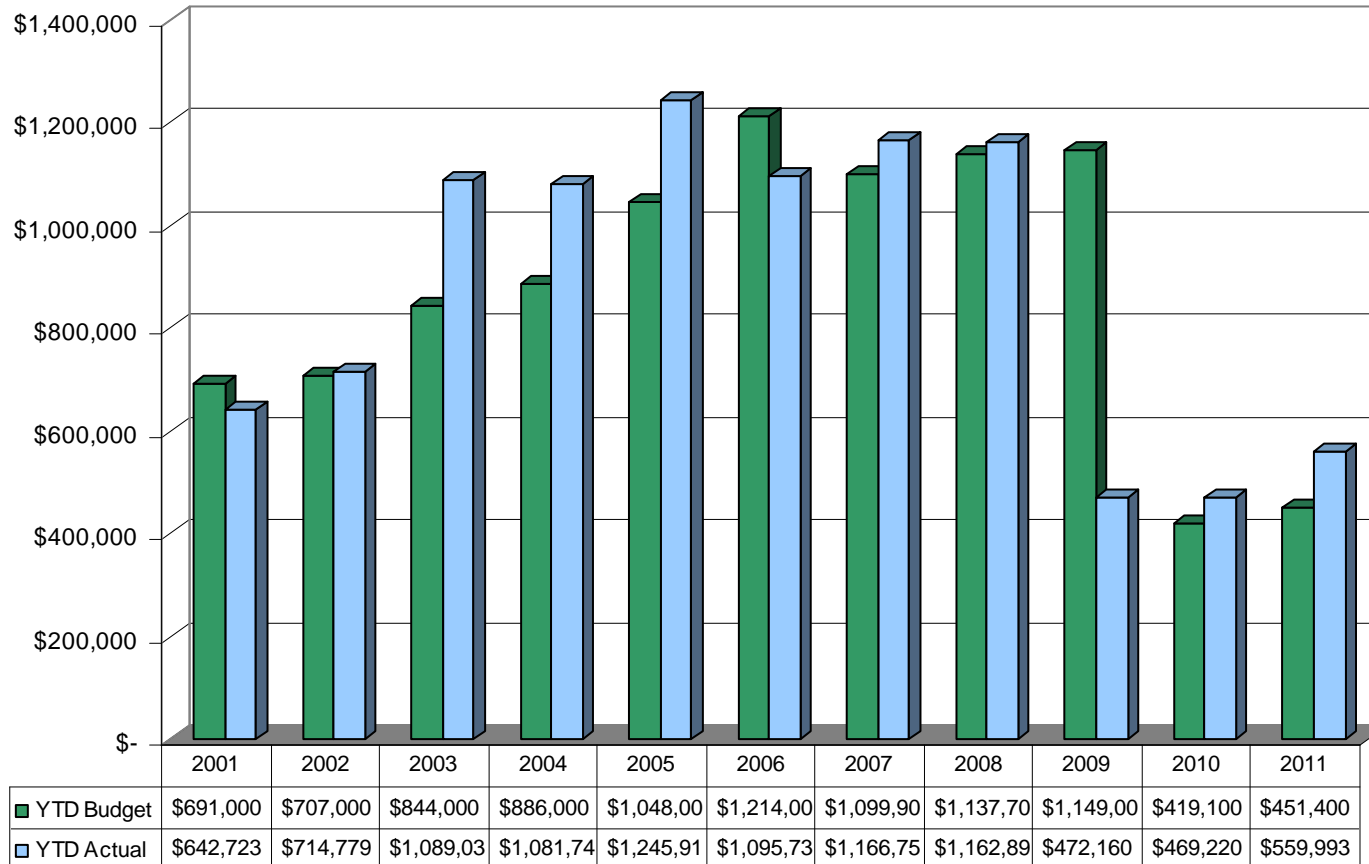
Total Building Permits Issued Year to Date



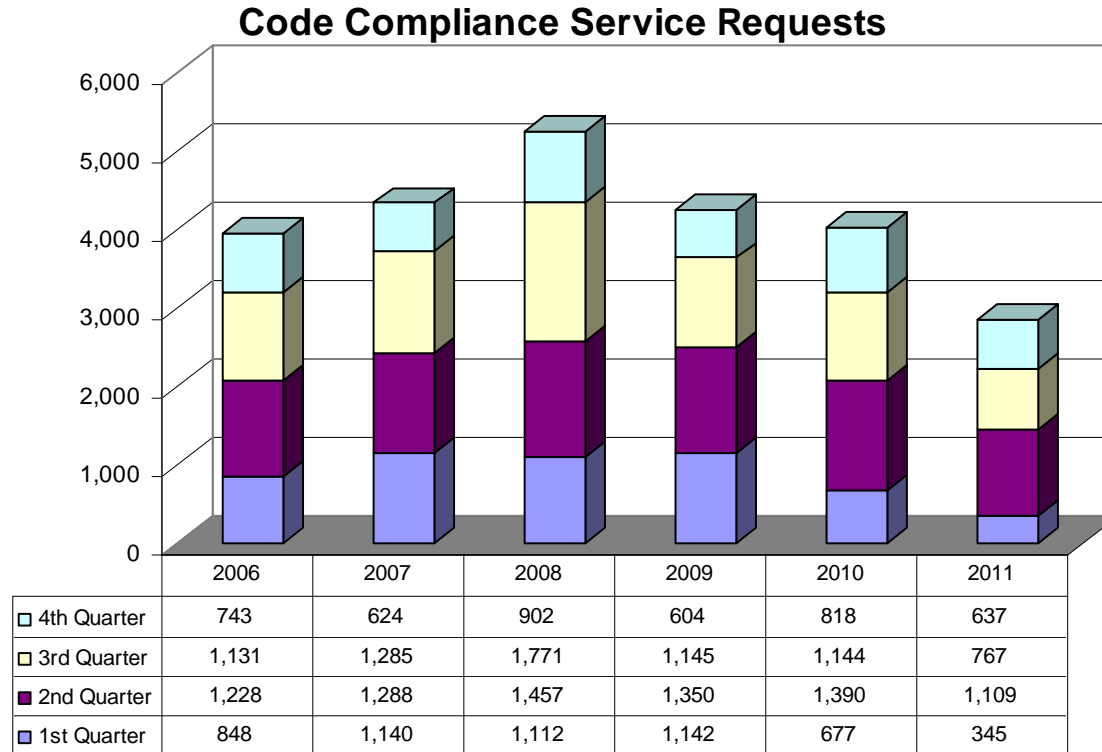
	YTD 2004	YTD 2005	YTD 2006	YTD 2007	YTD 2008	YTD 2009	YTD 2010	YTD 2011
■ Additions/Alterations/Misc.	460	462	508	562	519	411	372	412
■ New Multi-Family	175	120	53	104	92	72	8	5
■ New Commercial	29	40	44	60	58	14	17	20
■ New Single-Family Detached	568	599	490	493	328	269	248	268

Comment: Revenue collections finished well above budgeted projections, although the new high school construction contributed to this significantly.

Building Permit Fees Collected Year-to-Date

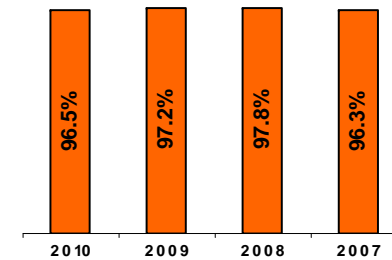


Comment: The top graph shows the amount of requests for service the Code Compliance Program works annually by quarter.
The bottom graph reflects the violation abatement success rate for the past four years.



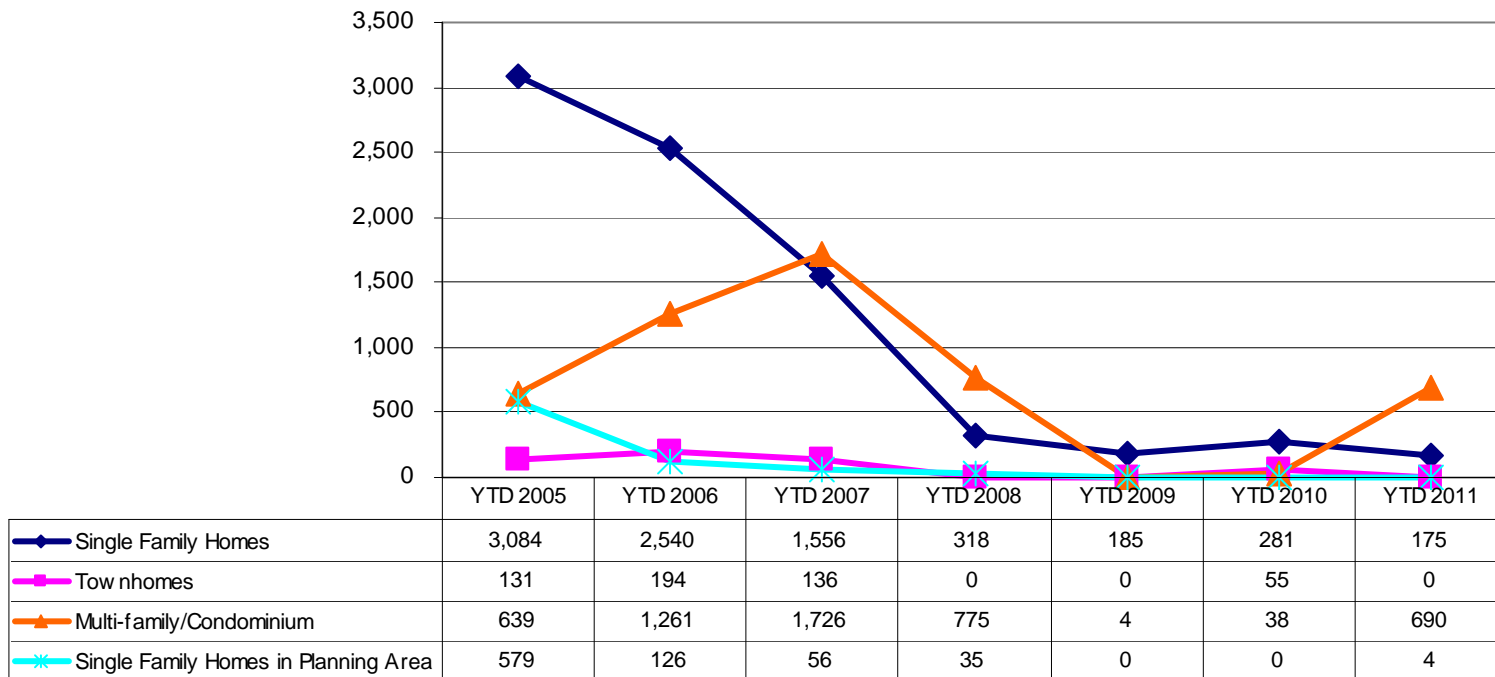
Success Rates for Code Compliance

	Total Service Requests	Violations Found	Violations Abated	Success Rate
2010	4,029	3,806	3,671	96.5%
2009	4,241	4,124	4,009	97.2%
2008	5,242	5,051	4,938	97.8%
2007	4,337	4,174	4,019	96.3%



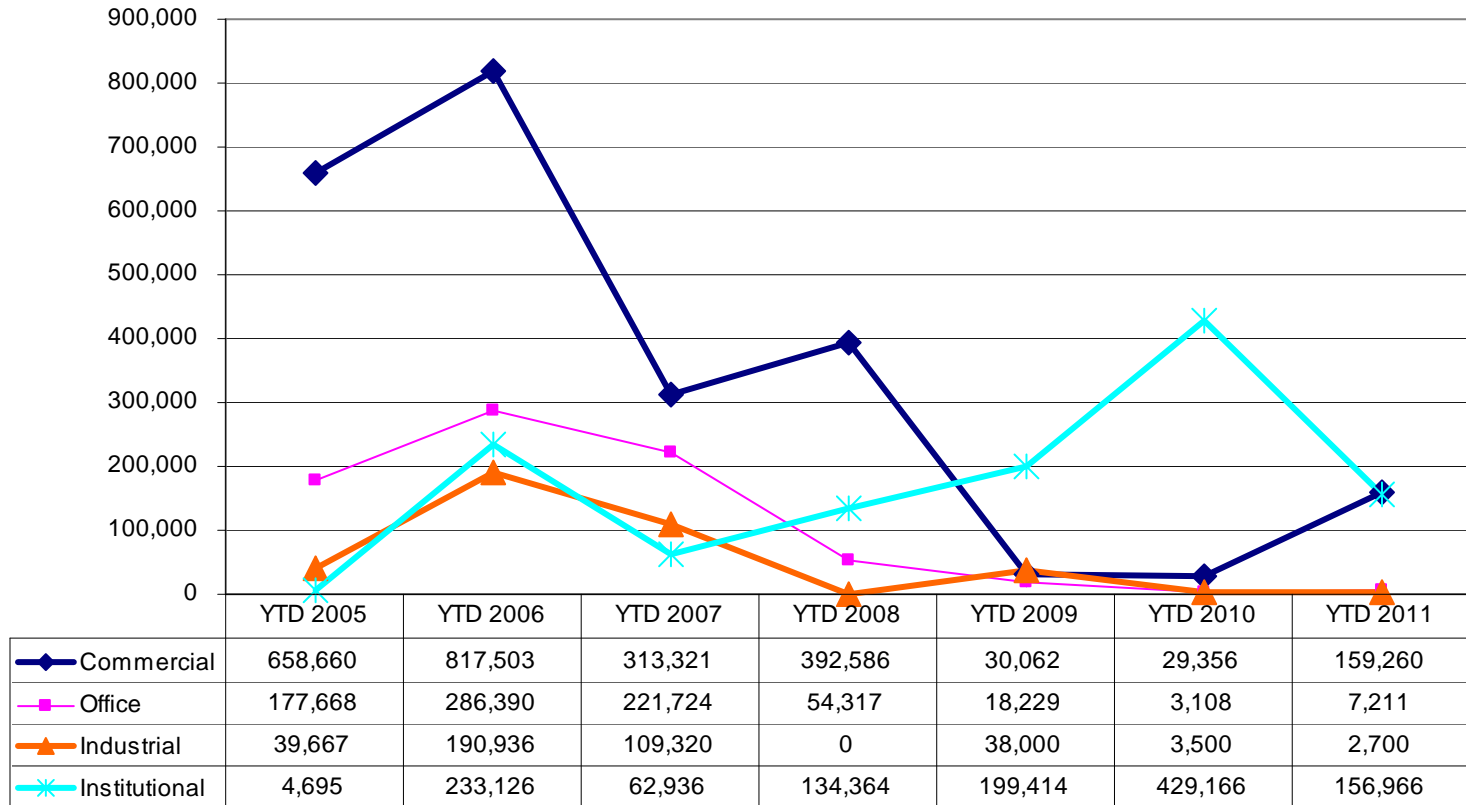
Comment: The increased number of multi-family dwelling units approved is a result of three large, primarily student housing projects: Campus Crest, 555 Maple, and Eco Downtown.

Dwelling Units by Type Approved by the Planning Commission or Development Services



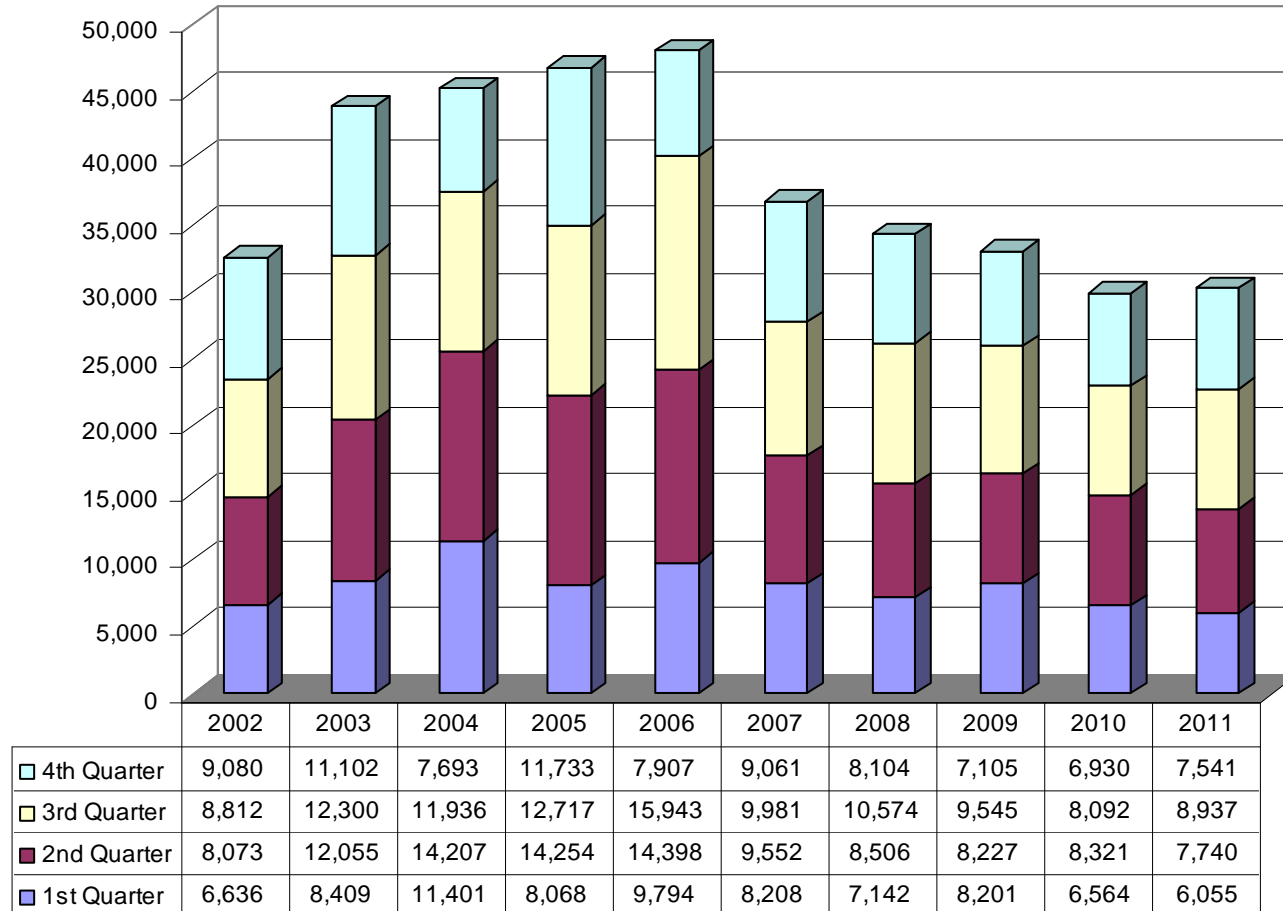
Comment: The amount of new non-residential space increased this year with a new hotel, bank, gas stations, and Fayetteville High School.

Non Residential Square Footage by Type Approved by the Planning Commission or Development Services



Comment: Operations in 2011 increased 1.2% over 2010. The FAA forecasts that General Aviation Operations in the U.S. may see modest growth of 1% annually from 2011 to 2030. Industry predictions indicate optimism for a rebound to begin in 2012.

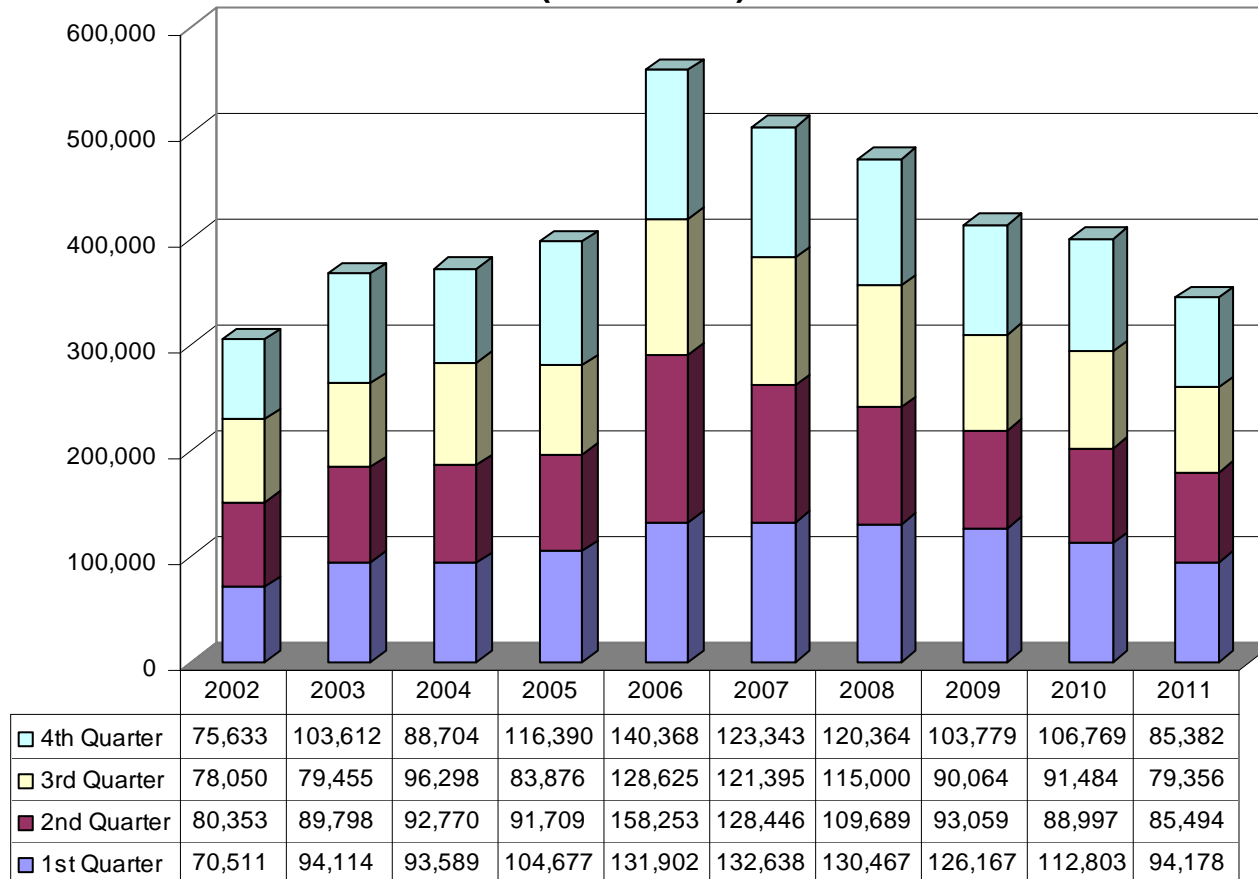
Airport Operations* (Number of Occurrences)



*A takeoff, landing, or control tower contact passing through Fayetteville airspace during tower operating hours.

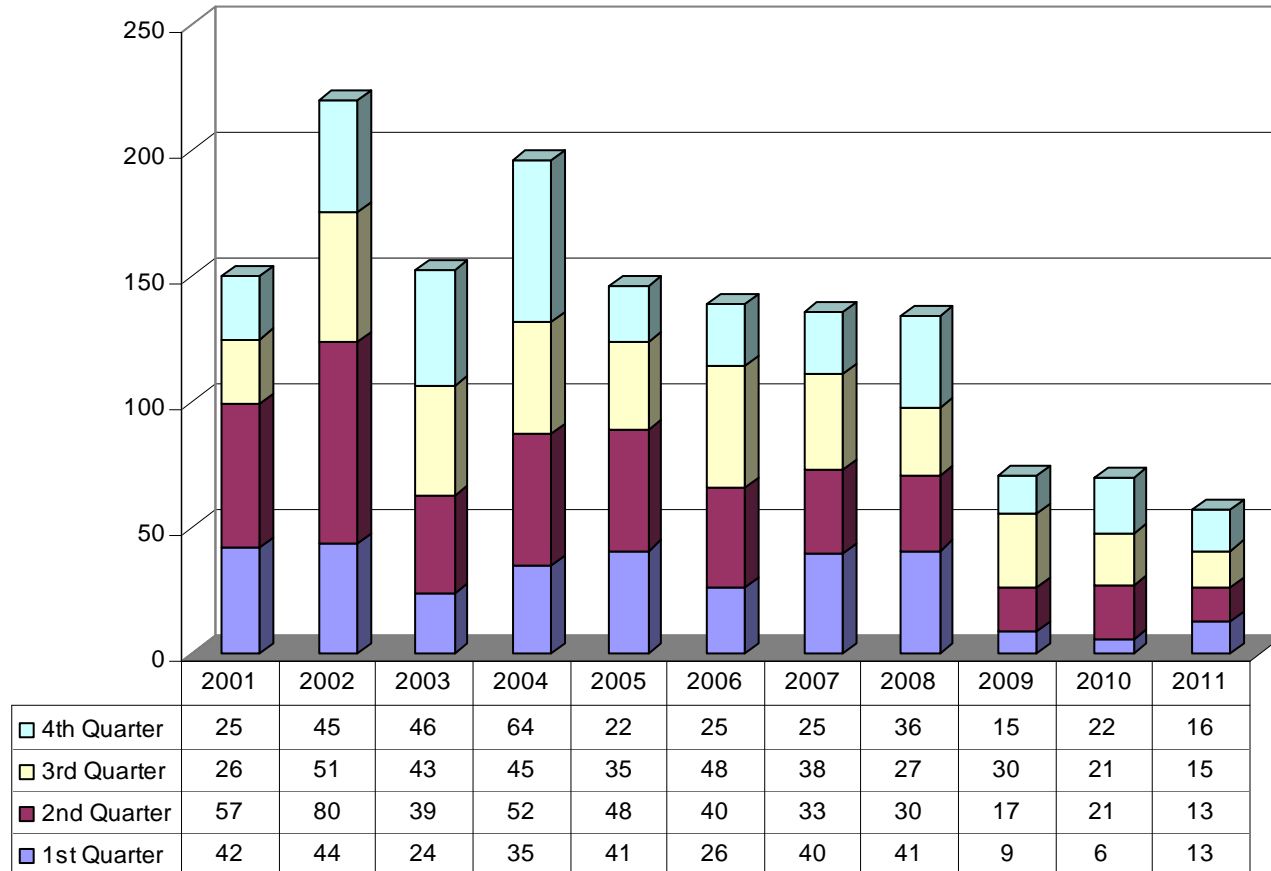
Comment: Fuel sales declined 14% in 2011. A 1.2% increase in aircraft operations did not equate to increased sales. Decreasing sales since 2007 is consistent with declining U.S. aviation business activity due to U.S. economic conditions.

Airport Fuel Sales (In Gallons)



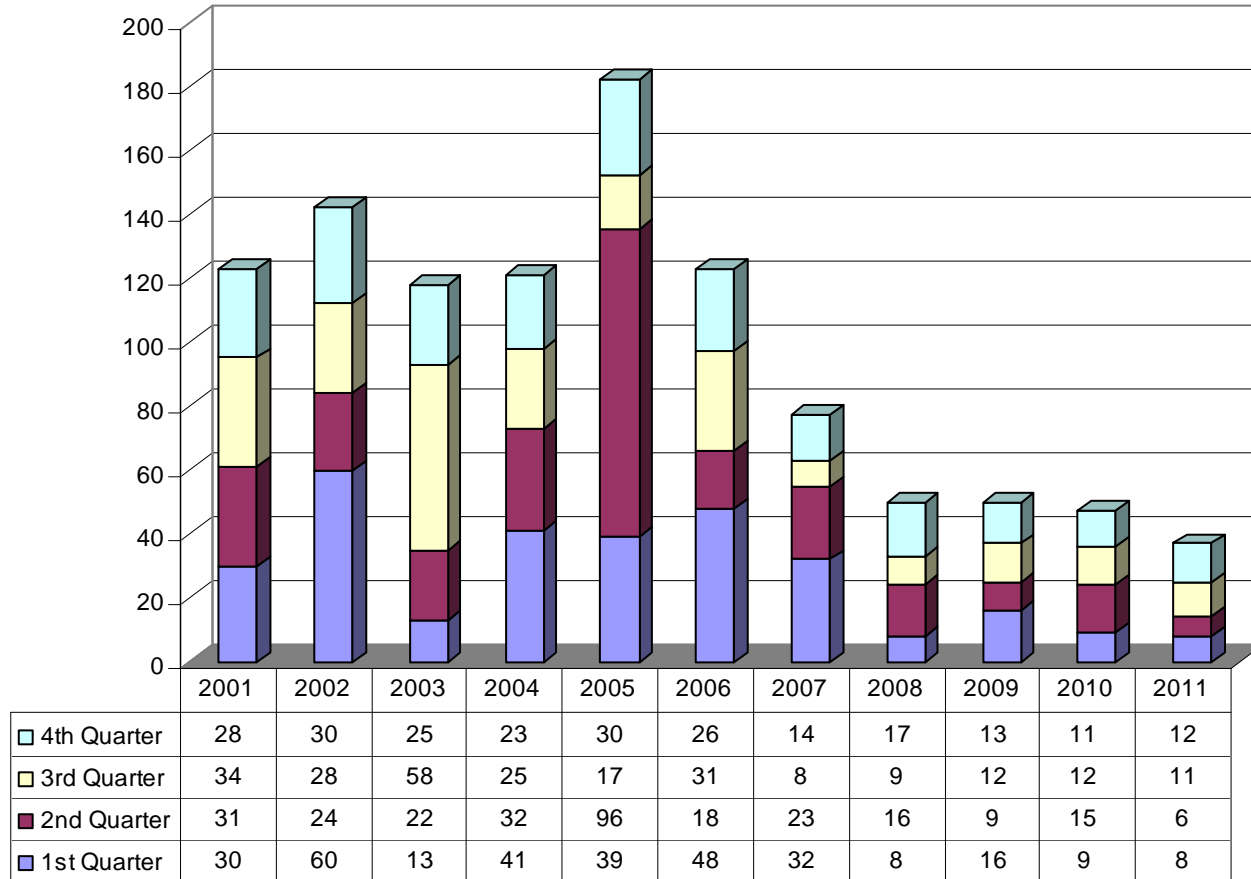
Comment: End of year numbers for 2011 are relative to the past two years. However, staff perceives an upward trend in new home construction for 2012.

Number of New Water Connections Made



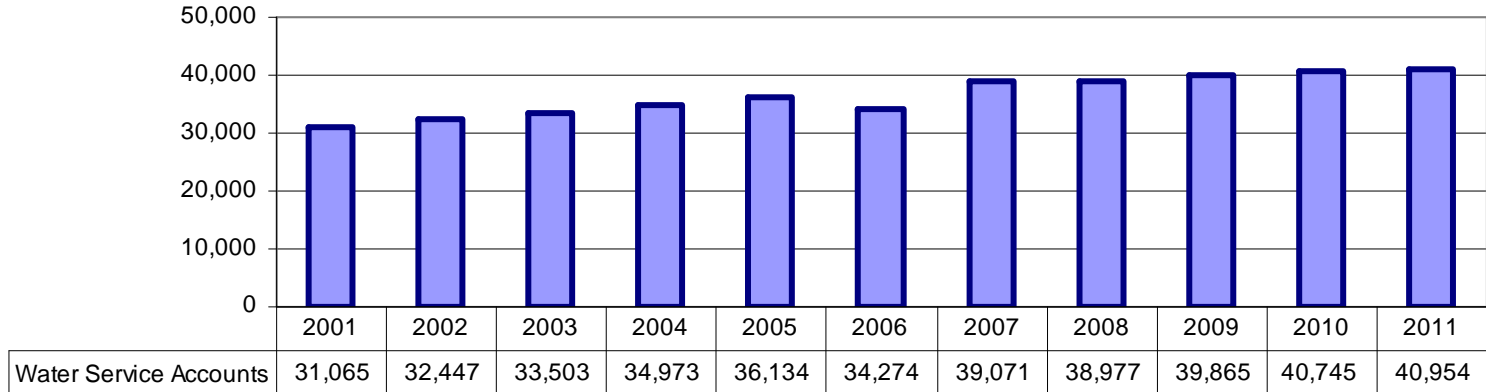
Comment: End of year numbers for 2011 are somewhat lower than the past three years. However, staff perceives an upward trend in new home construction for 2012.

Number of New Sewer Connections Made

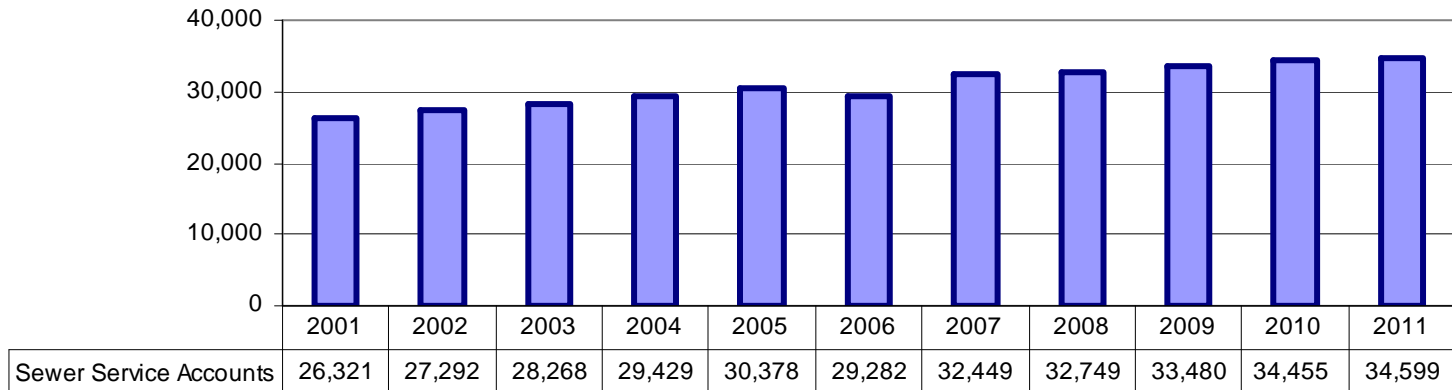


Comment: Service accounts for 2011 have increased as anticipated based on positive trends from the last four years.

Number of Water Service Accounts

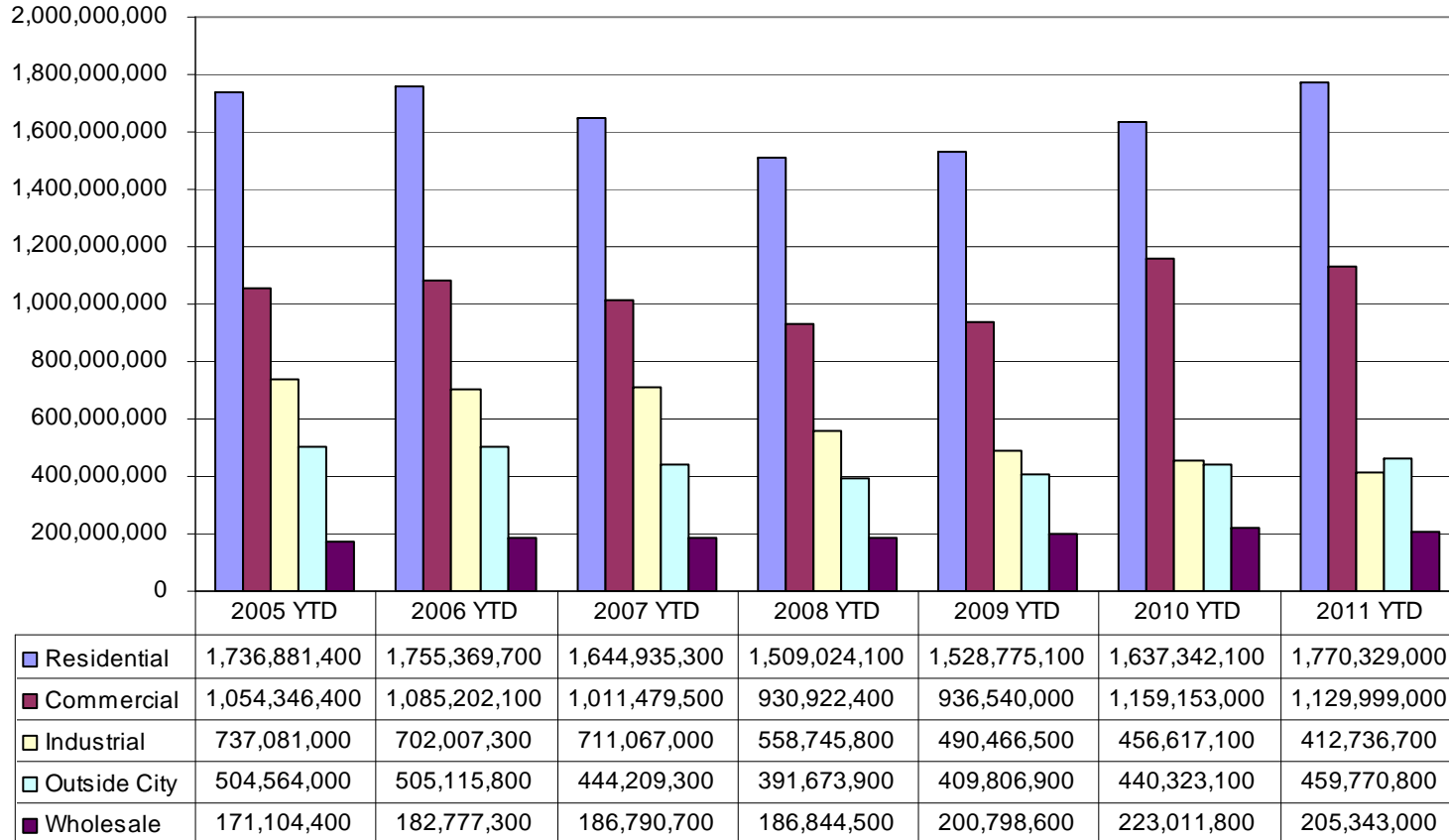


Number of Sewer Service Accounts



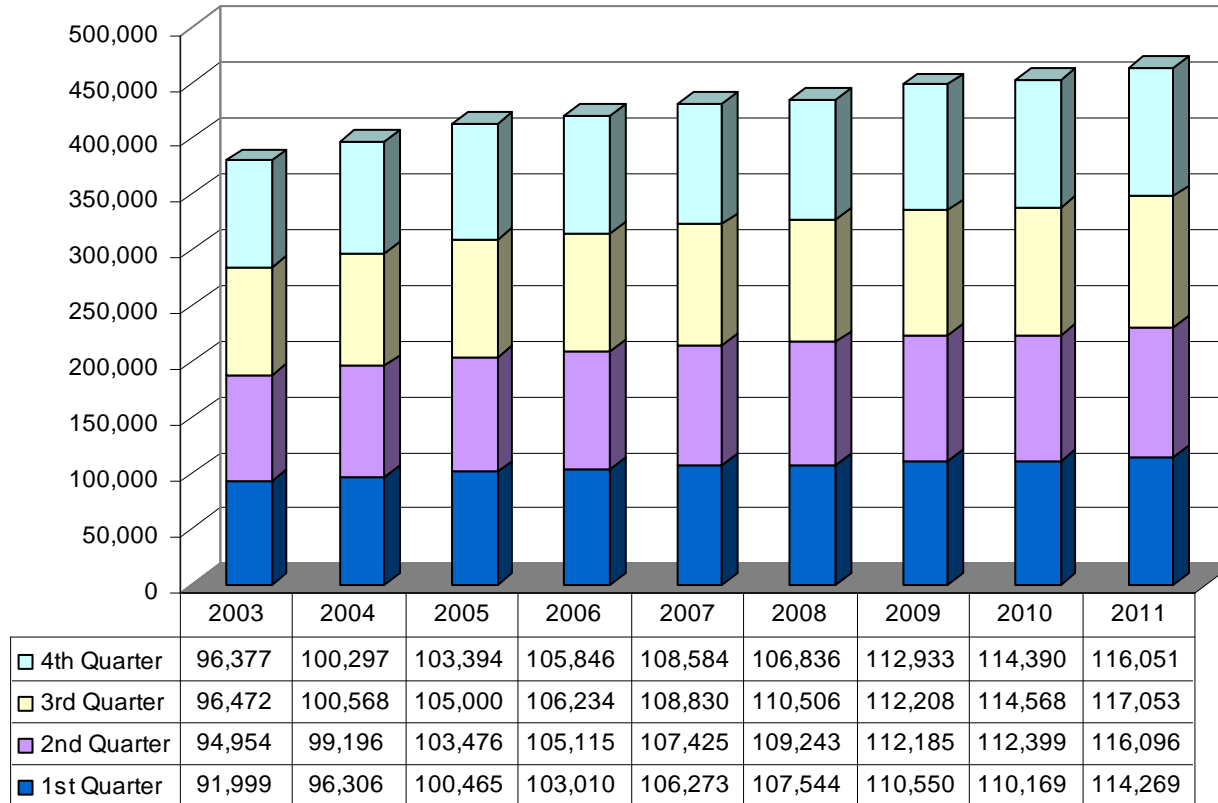
Comment: Increased water consumption for 2011 compared to 2010 is the result of the extremely high temperatures and dry weather during the current summer months compared to previous summer months.

Water Consumption by Customer Type (In Gallons)



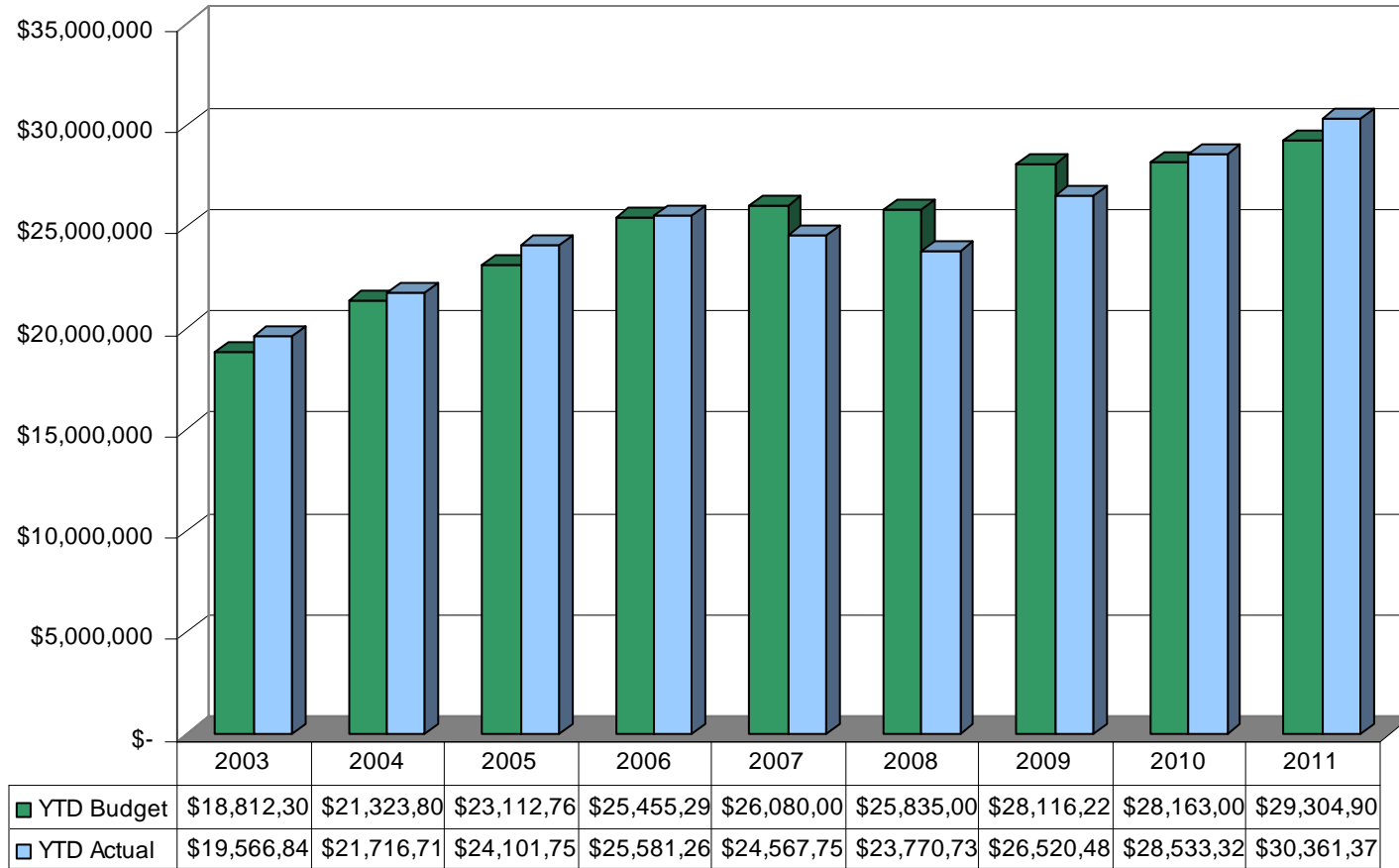
Comment: The fourth quarter of 2011 compared to the fourth quarter of 2010 indicates stagnate growth.

Number of Water & Sewer Utility Bills Processed



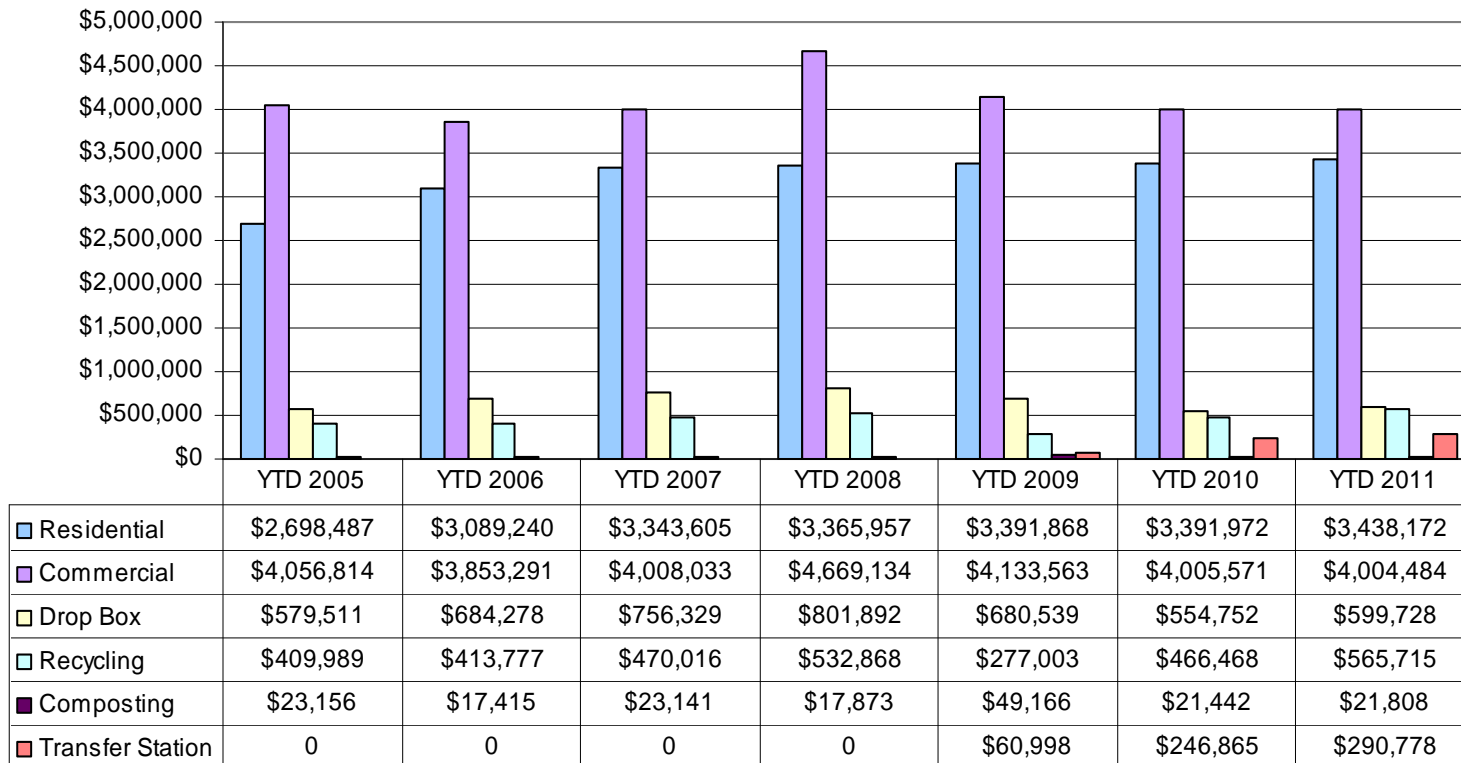
Comment: Revenue increases for 2011 is the result of the extremely high temperatures and dry weather during the current summer months compared to previous summer months.

Water & Sewer Billed Revenue Collected Budget Compared to Actual



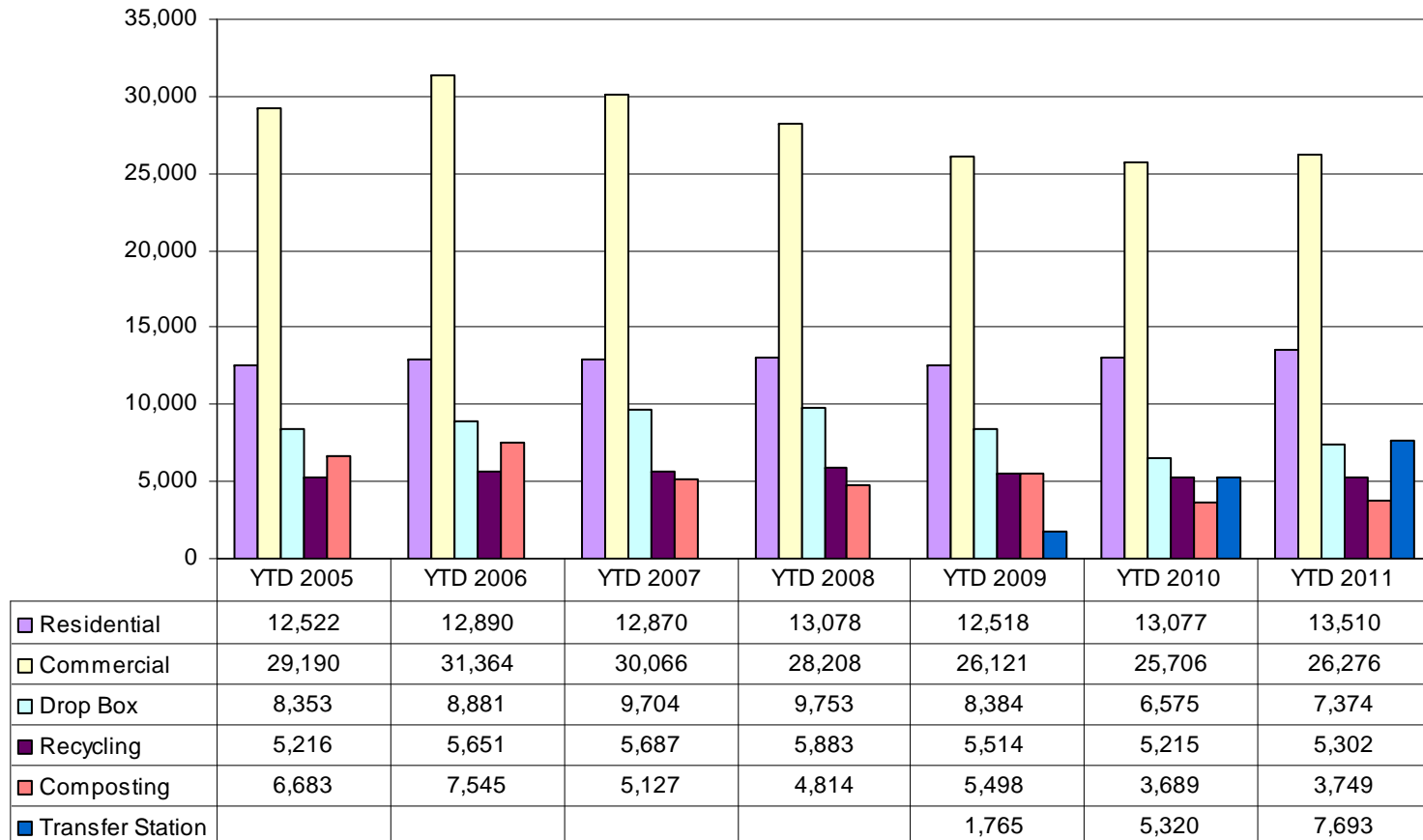
Comment: The City took over operation of the Transfer Station in late October 2009. Cardboard recycling revenue is accounted for in the Commercial program due to a commercial collection vehicle used. Transfer Station business is increasing each year since the City has gained sole control. Year end revenue needs to be verified with the December Income Statement.

Solid Waste Program Revenues (In Dollars)



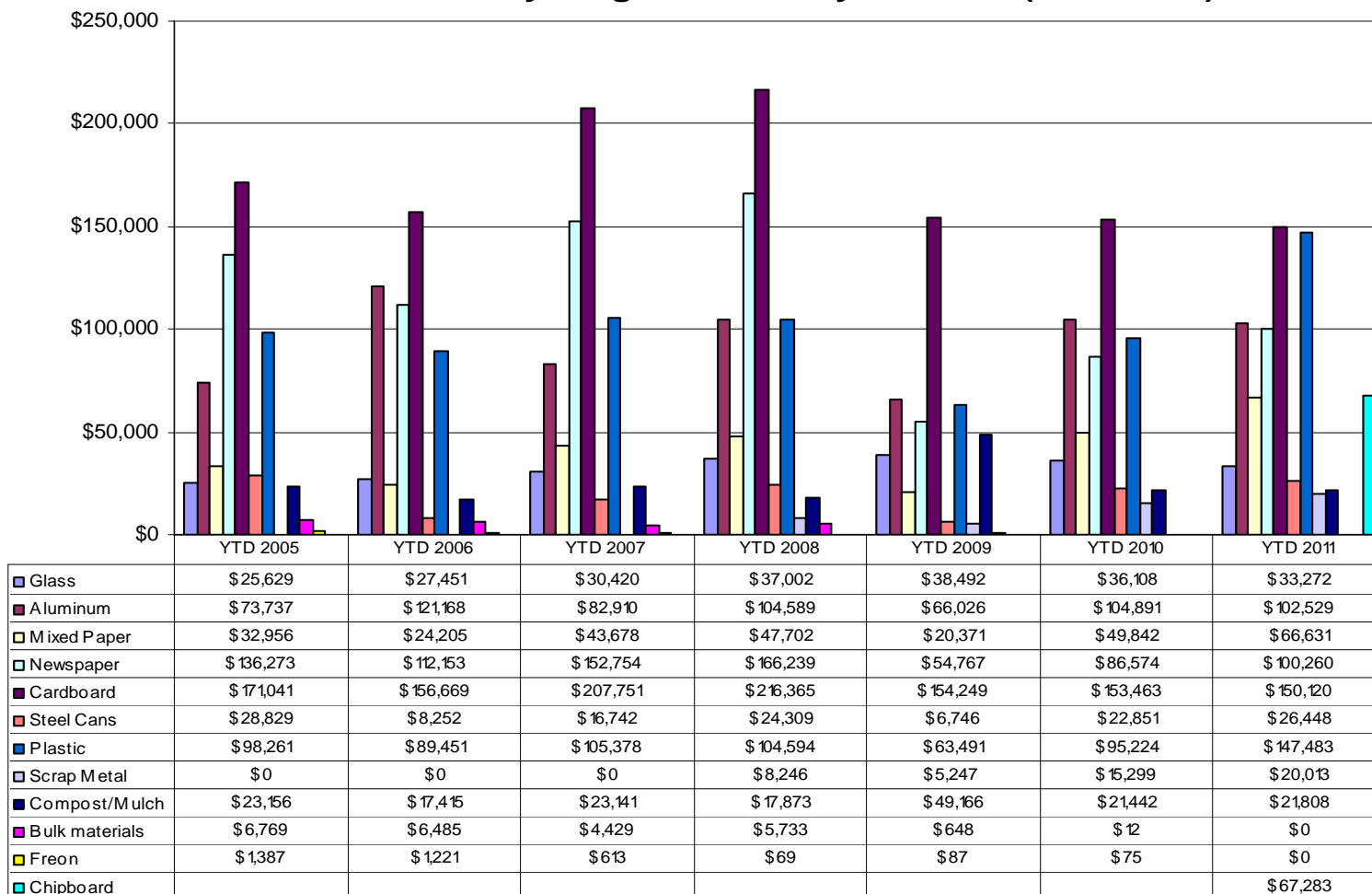
Comment: Recycling tonnage is reflective of recycling tons sold through year end. Waste volumes are rising slightly due to an improving economy and city growth.

Solid Waste Tonnage Collected by Program



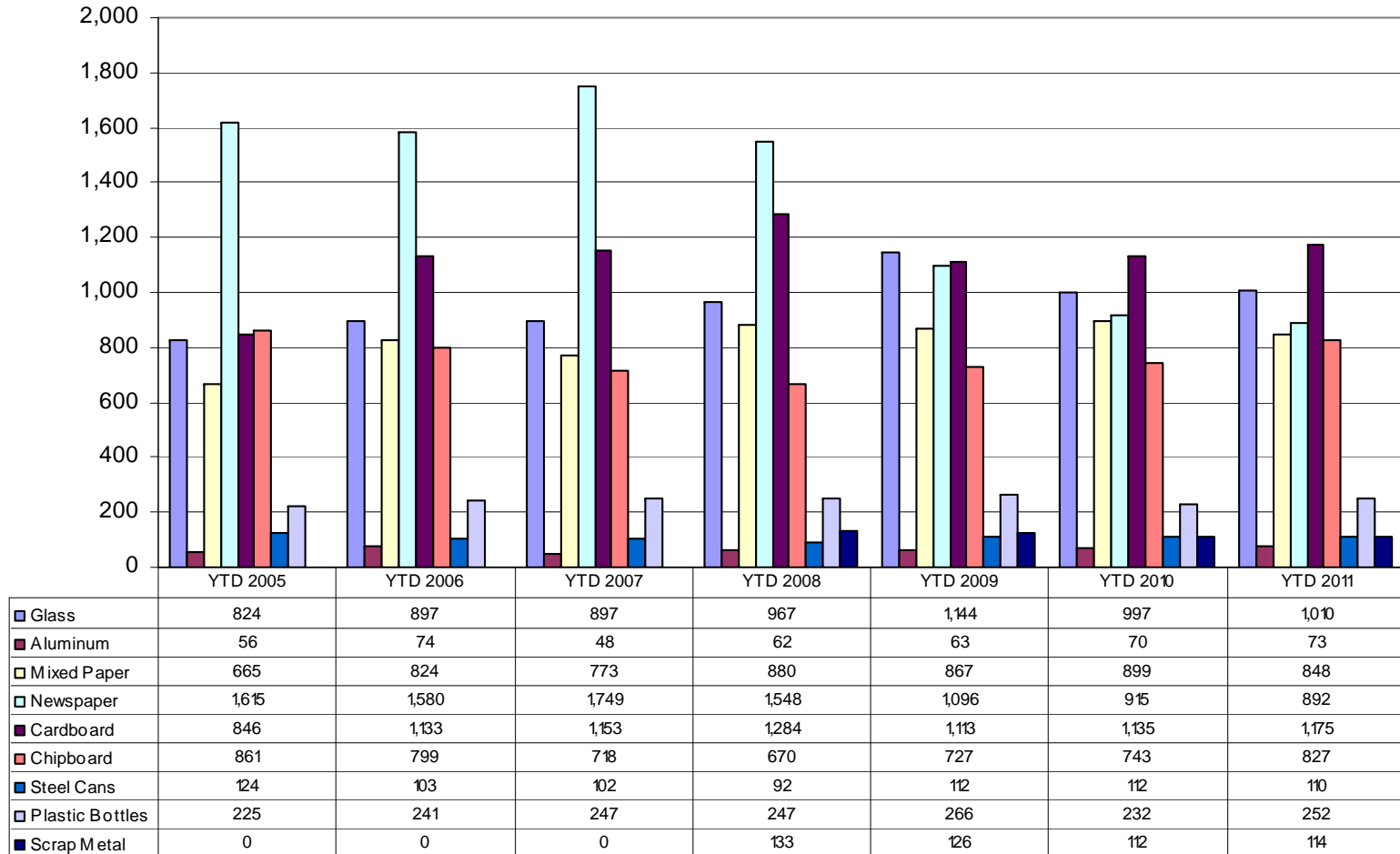
Comment: Commodity markets performed very well this year but slipped in the last quarter. Beginning in December 2011, glass is sent to Ripple Glass and does not generate revenue or cover transportation expense. Commodity prices for materials are volatile and change monthly, sometimes weekly. Chipboard revenue is now being tracked separately from cardboard. Fourth quarter revenue needs to be verified with the December Income Statement.

Solid Waste Recycling Revenue by Product (In Dollars)



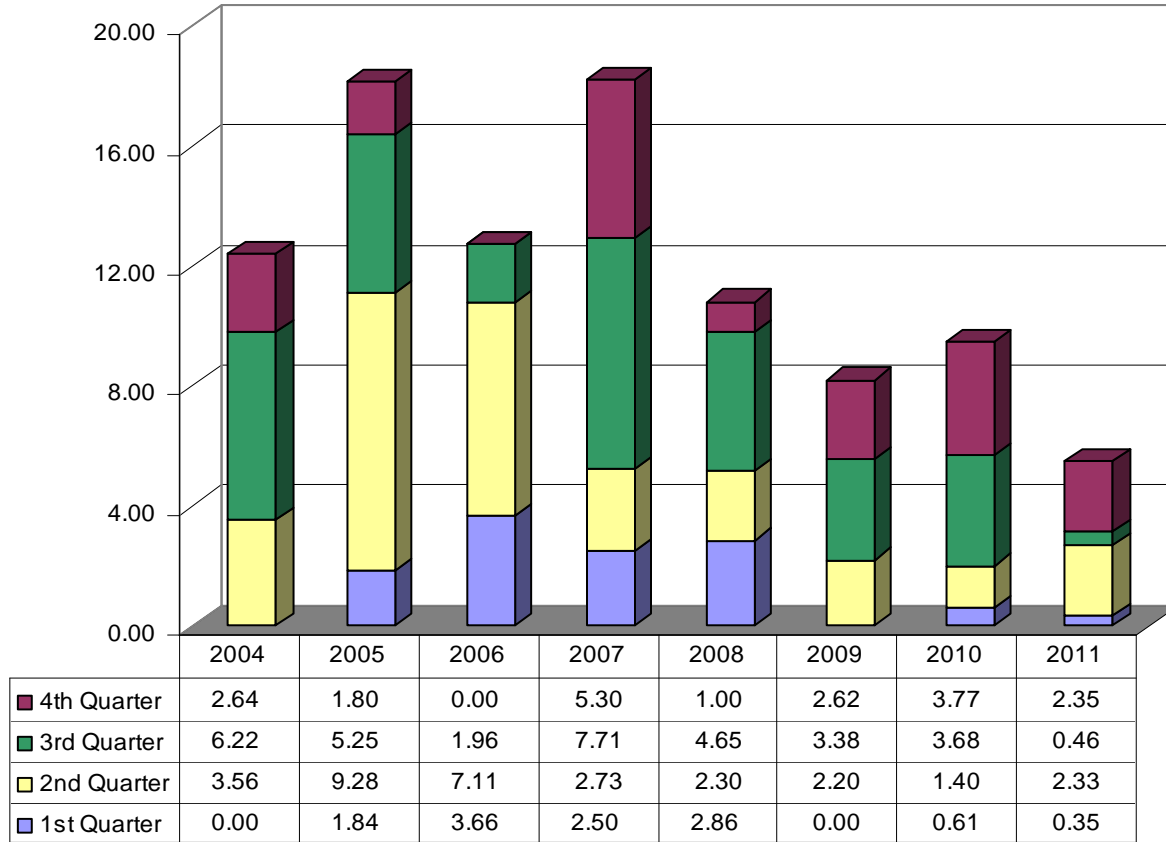
Comment: Tonnage sold was similar to last year with a slight increase of 1.6%. Fiber related commodities continue to account for 70% of all materials collected.

Solid Waste Recycling Tonnage Sold by Product



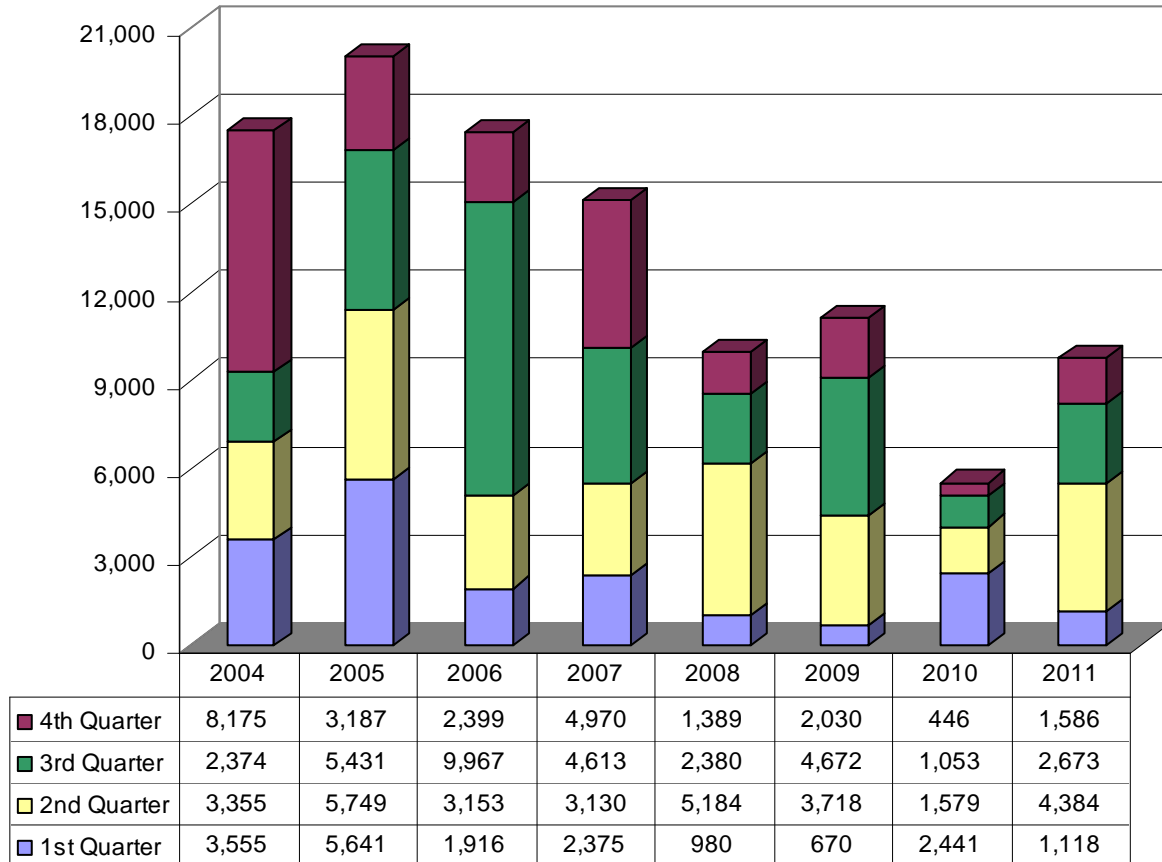
Comment: Overlays and spot repairs included: 54th Street, Persimmon Street, Paradise Lane, Elaine Avenue, Sweetbriar Drive, Oakcliff Avenue, and Hilldale Avenue.

Asphalt Overlay - Miles Completed



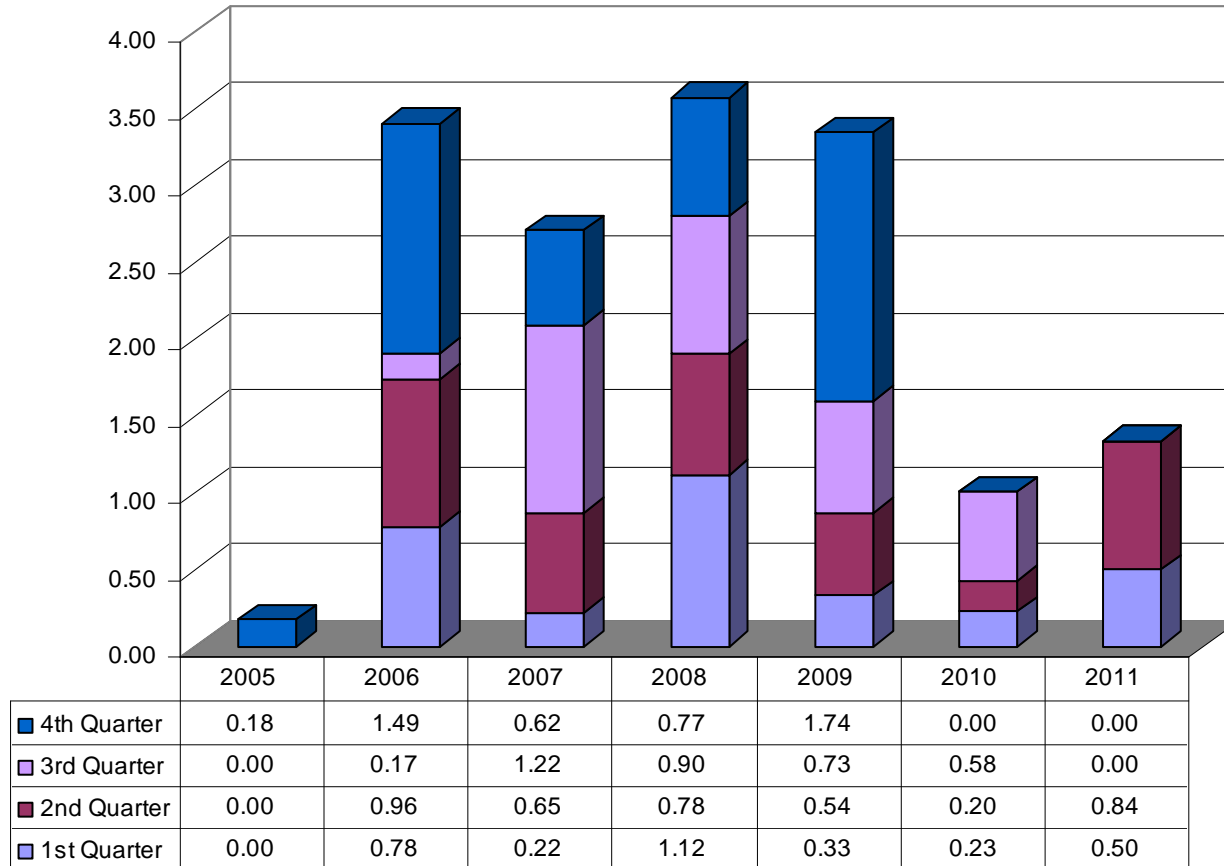
Comment: Sidewalk work was completed on Bois de Arc Lane, Milo Way, Olive Avenue, Briarwood Lane, Katherine Avenue, and Cleveland Street.

Sidewalk Construction - Linear Feet Completed



Comment: The Trail Crew continues to work diligently on the 2.3 mile U of A Farm Trail. Construction on the U of A Farm Trail will continue through the middle of 2012 with completed sections reported by quarter.

Trails Constructed or in Progress



Transportation Bond Street Improvements (LTD)
December 31, 2011

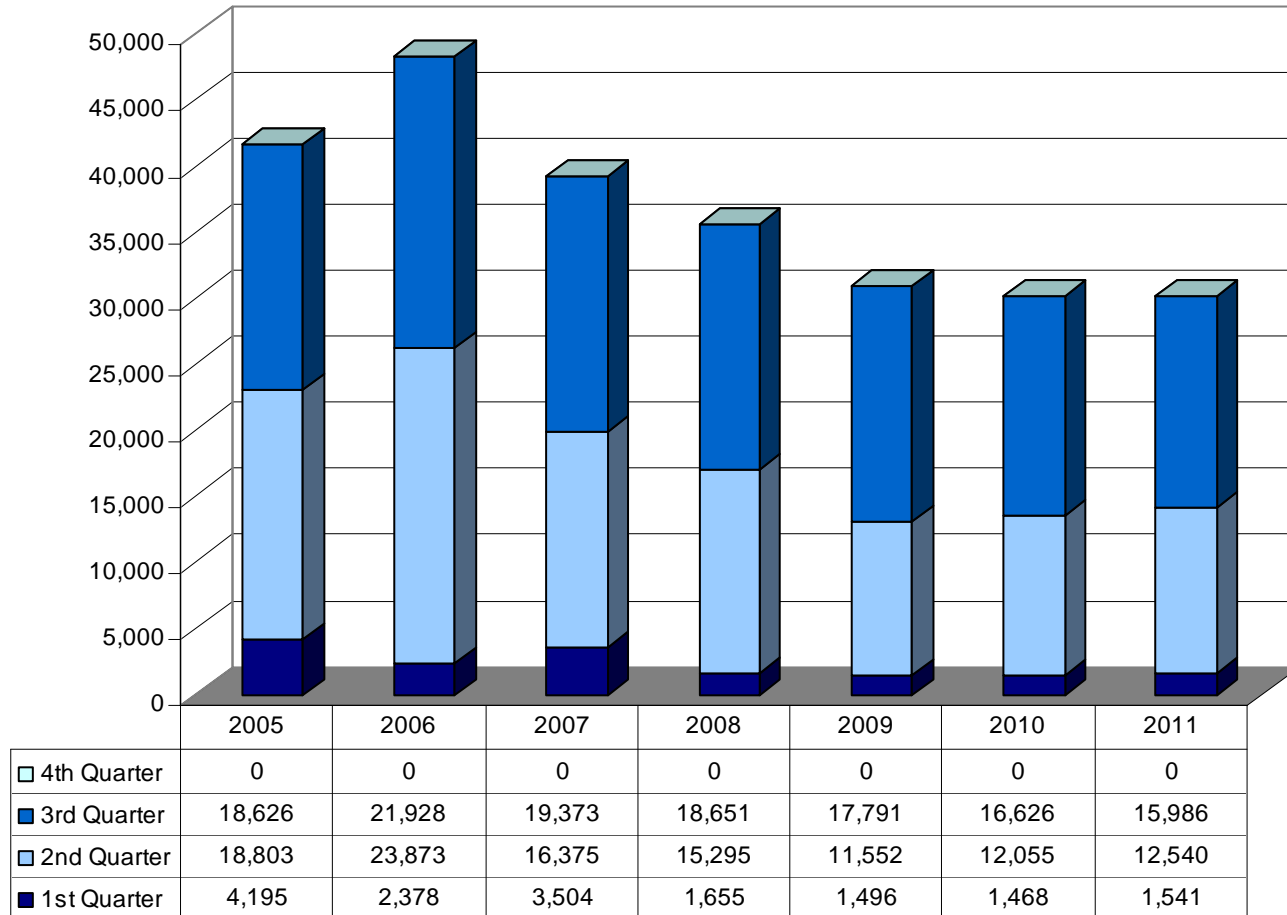
* Phase I: Oct 2006 - Sept 2009

* Phase II: Oct 2009 - Jan 2014

Sub Projects	LTD BUDGET							Encumbs	Remaining Budget
	Sales Tax	*Phase I Trans Bonds	*Phase II Trans Bonds	Water/Sewer	Total Budget	Expenses			
Active Projects:									
02 - Maple & Lafayette Historic Bridges	-	75,000	-	-	75,000	59,829	-	15,171	
04 - Cato Springs (S. School to Razorback)	3,022,679	1,436,392	907,742	350,000	5,716,813	1,732,143	3,445,497	539,173	
05 - Crossover (Mission to City Limits)	-	5,001,814	2,665,000	-	7,666,814	6,307,974	-	1,358,840	
06 - Fifteenth St (Happy Hollow-S College)	-	19,386	2,195,613	-	2,214,999	19,386	-	2,195,613	
07 - Garland (North to Melmar)	-	20,001	1,500,000	-	1,520,001	14,987	-	1,505,014	
08 - Garland (North to Melmar) W/S Rels	160,000	-	-	-	160,000	124,485	-	35,515	
09 - Garland (Shiloh to Howard Nickell)	7,803	250,000	-	-	257,803	146,386	88,749	22,668	
10 - Huntsville (Happy Hollow-Stonebridge)	200,000	1,040,000	1,745,000	-	2,985,000	1,083,161	-	1,901,840	
11 - Huntsville Water/Sewer Relocations	-	-	-	188,000	188,000	84,424	-	103,576	
12 - Mount Comfort (Rupple/Alpine)	283,424	10,398,000	-	-	10,681,424	10,170,028	4,175	507,221	
13 - Fayetteville Expressway Econ Corridor	1,031,562	881,115	618,884	-	2,531,562	998,625	307,138	1,225,799	
14 - Rupple Road (MLK to Persimmon)	-	48,187	-	-	48,187	3,444	-	44,743	
17 - Right of Way Acquisition/Cost Sharing	-	212,100	-	-	212,100	212,100	-	-	
18 - Miscellaneous	-	71,485	1,135	-	72,620	60,701	-	11,919	
19 - Van Asche (Garland to Gregg)	-	102,468	-	-	102,468	29,005	18,670	54,793	
Complete Projects:									
01 - Wilson Park/Washington-Willow Area	-	910,186	-	-	910,186	910,186	-	(0)	
15 - Zion Road (College to Vantage)	-	2,274,560	-	-	2,274,560	2,274,560	-	(0)	
16 - College Avenue (Rock to Maple)	-	1,840,897	-	-	1,840,897	1,840,897	-	-	
Grand Total	4,705,468	24,581,590	9,633,374	538,000	39,458,433	26,072,321	3,864,228	9,521,883	

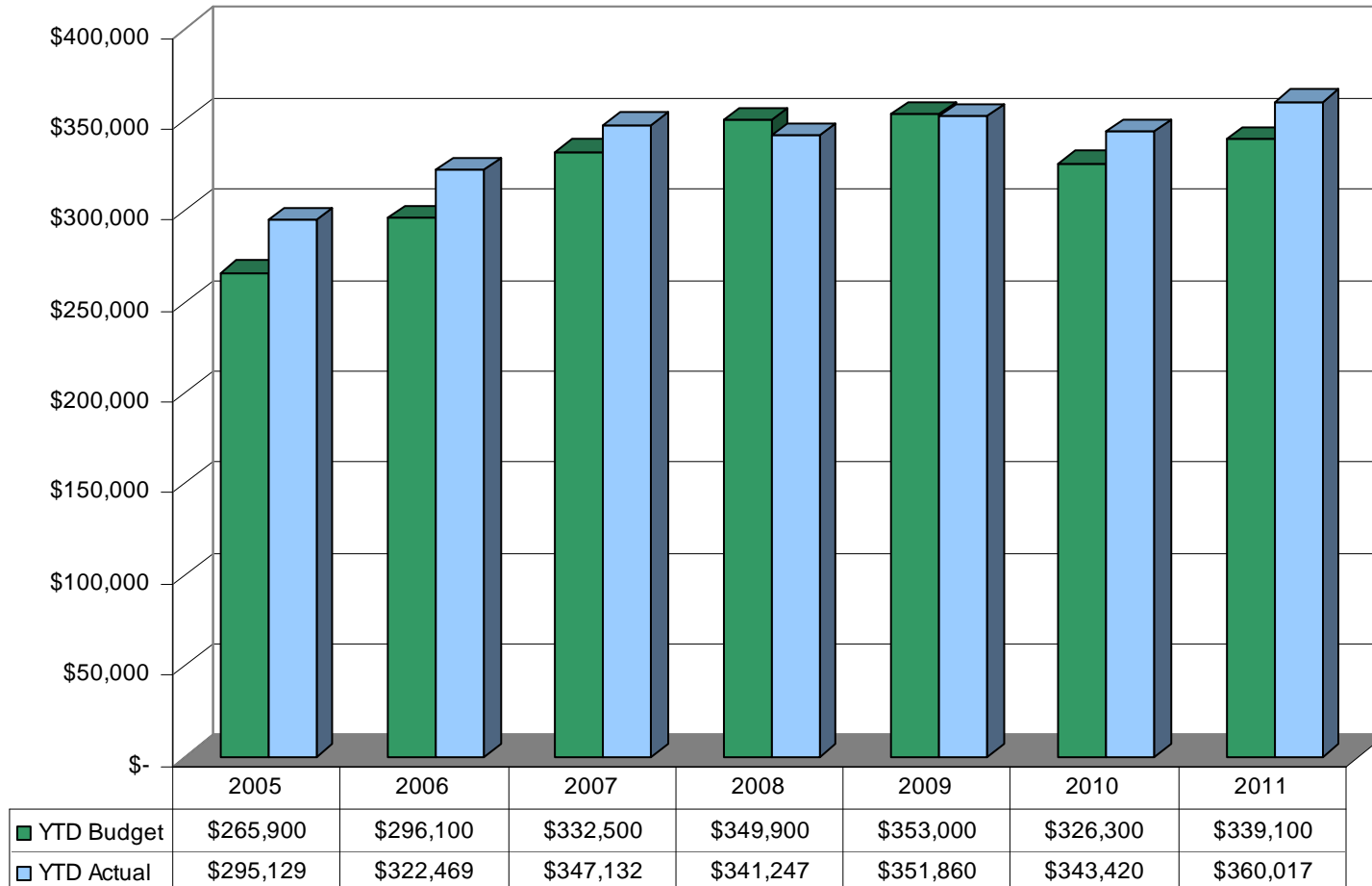
Comment: There were less participants in fall programs this year, however 2011 overall participant numbers remain consistent with the past few years.

Number of Parks & Recreation Program Participants



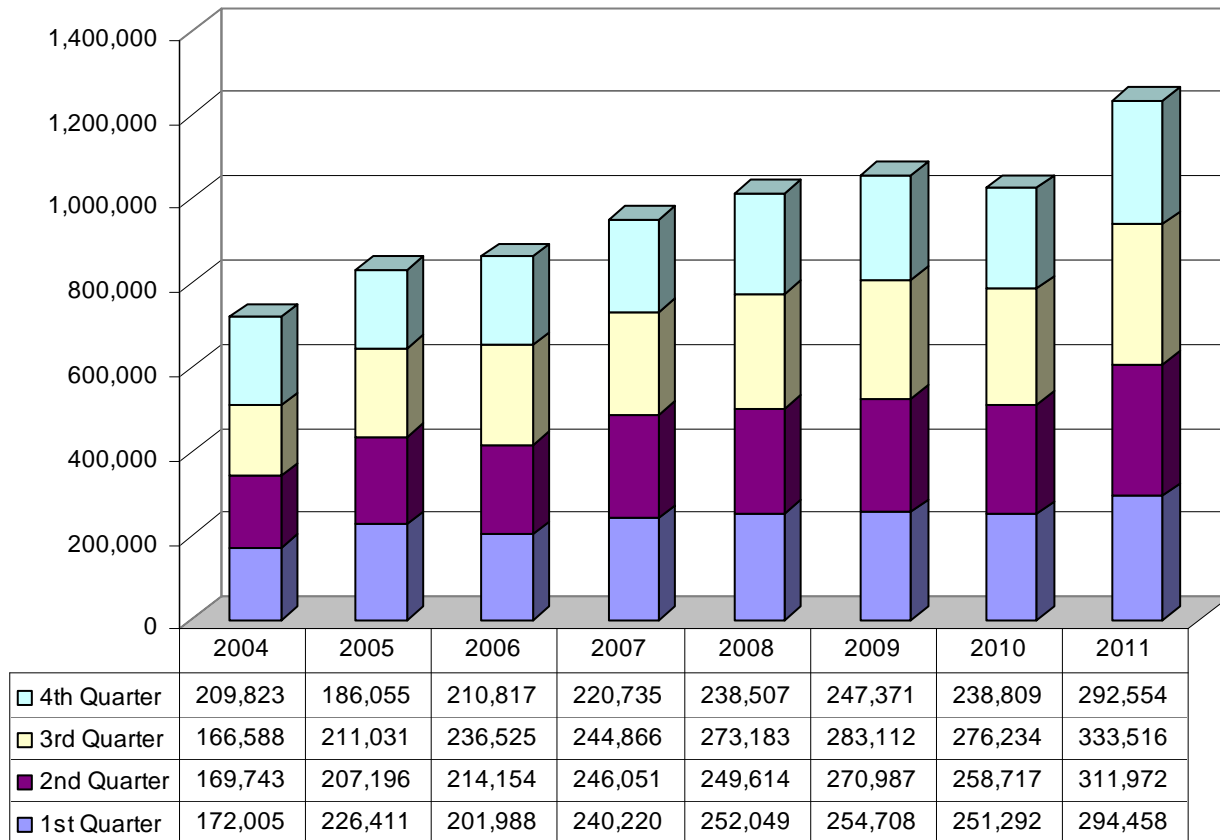
Comment: There was an increase in softball, kickball, pool, camp and player fee revenues and a decrease in rentals and soccer revenues this year.

Parks & Recreation Program Revenue Year-to-Date



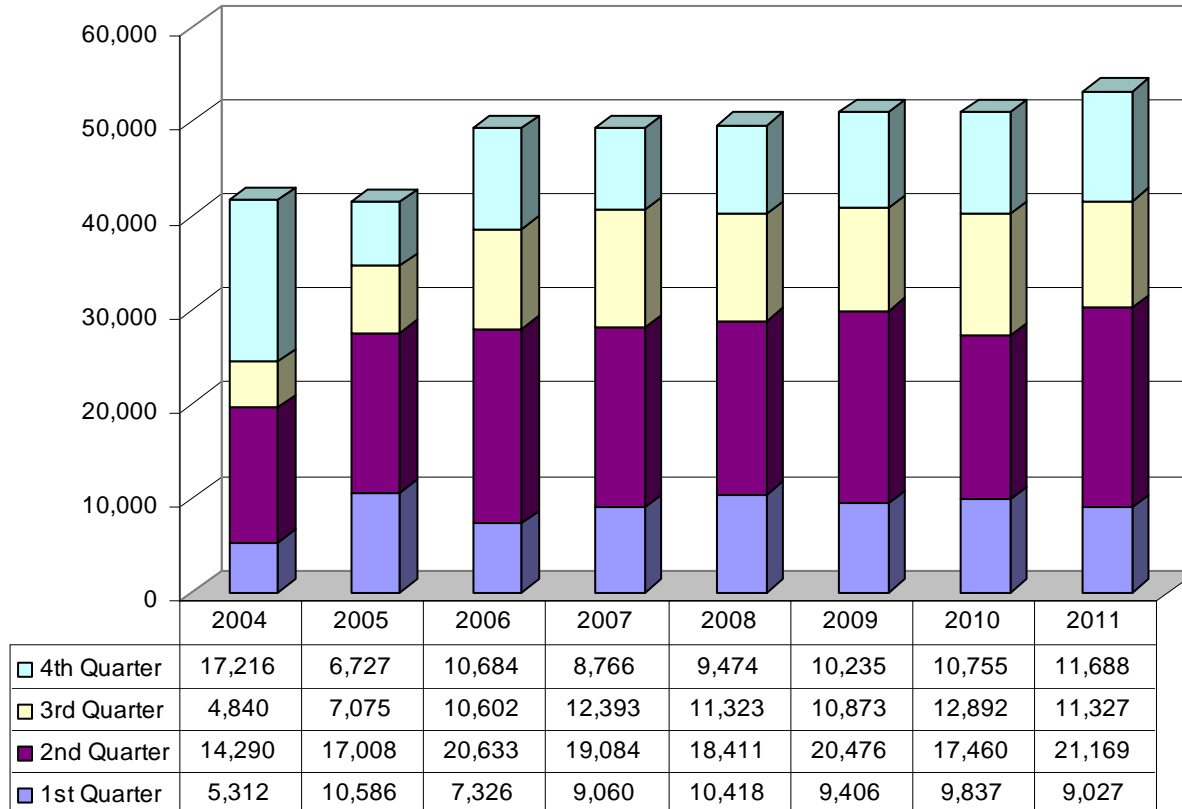
Comment: Total library check outs are up 20% over 2010 with teen check outs up over 40%. Digital check outs increased from 4,429 in 2010 to 32,779 in 2011.

Library Check Outs



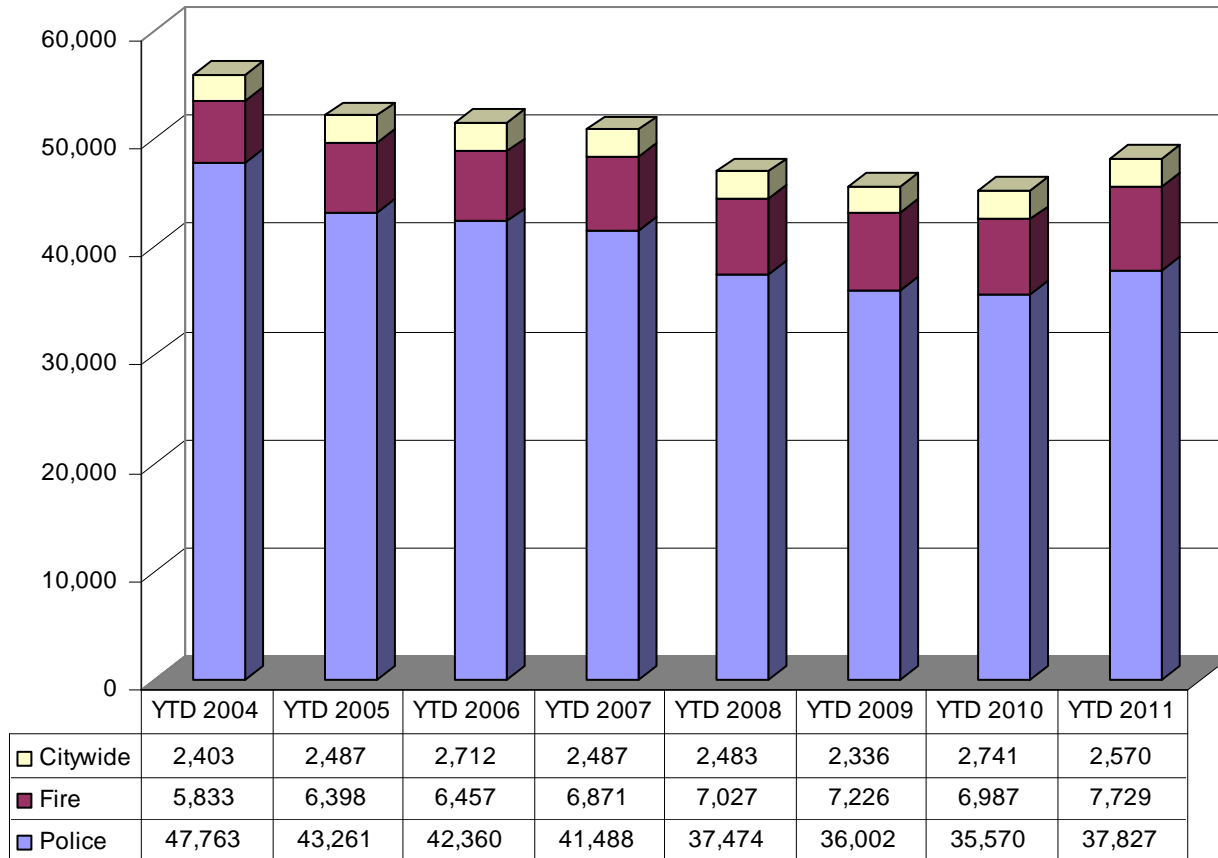
Comment: Attendance trended up posting a 3.3% gain over the same period last year.

Library Program Attendees



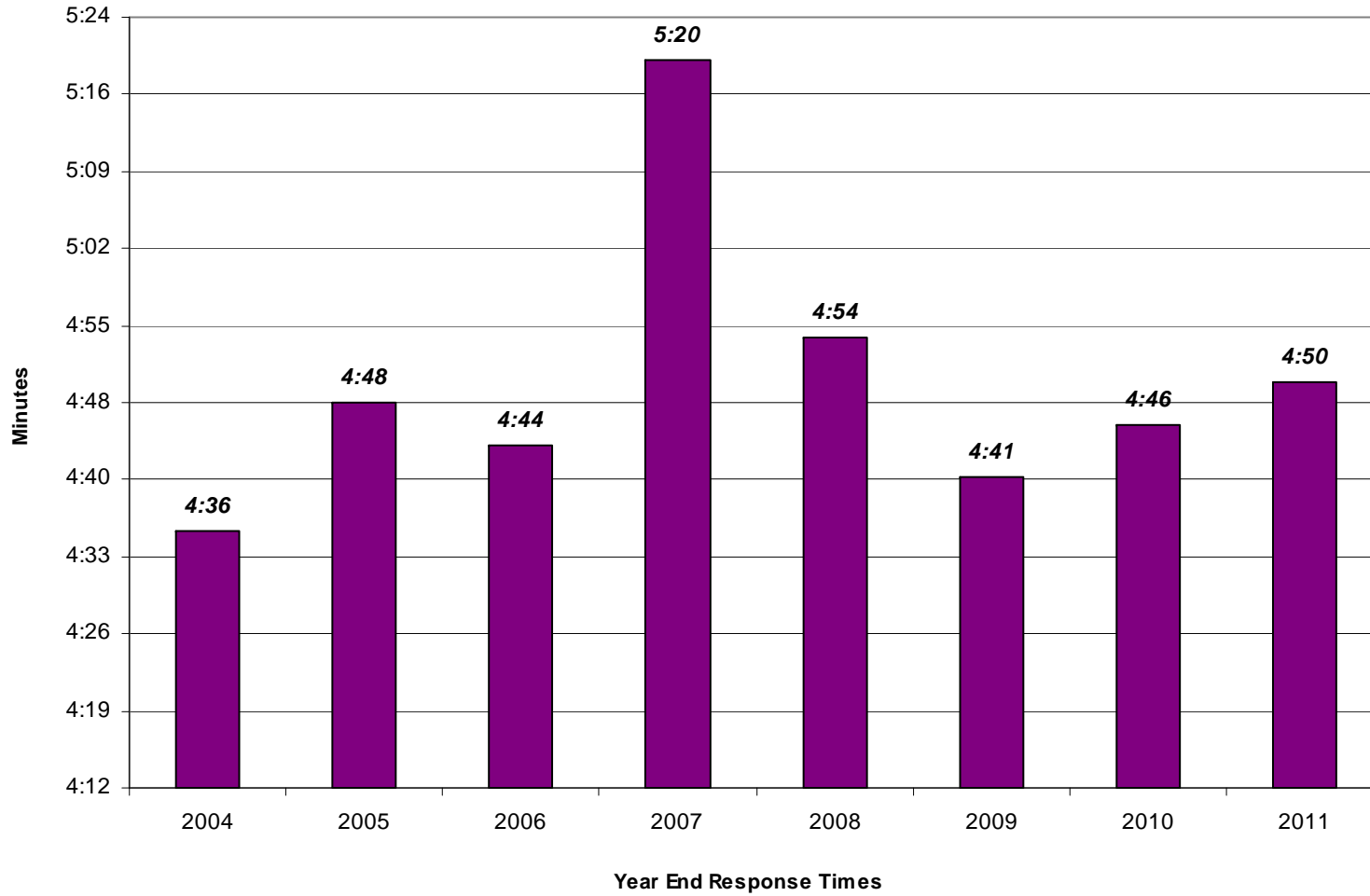
Comment: Police calls have increased over the 2010 fourth quarter by 6%. Staff received more than 2,950 calls over Priority 1 and 2 in 2010. Priority 3 calls decreased during this same time.

Central Dispatch Calls for Service



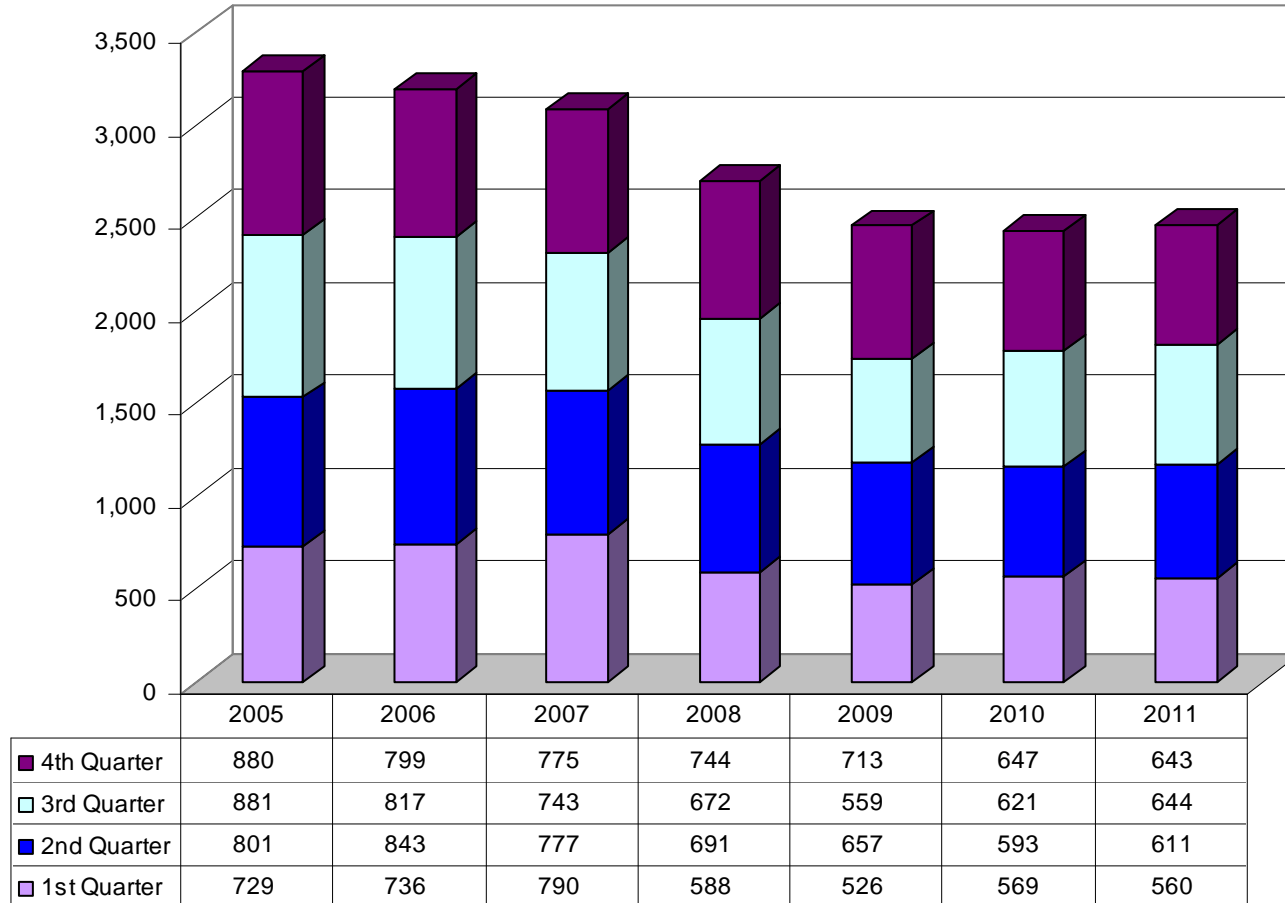
Comment: Response time to priority one calls increased four seconds compared to 2010.

Police Emergency Response



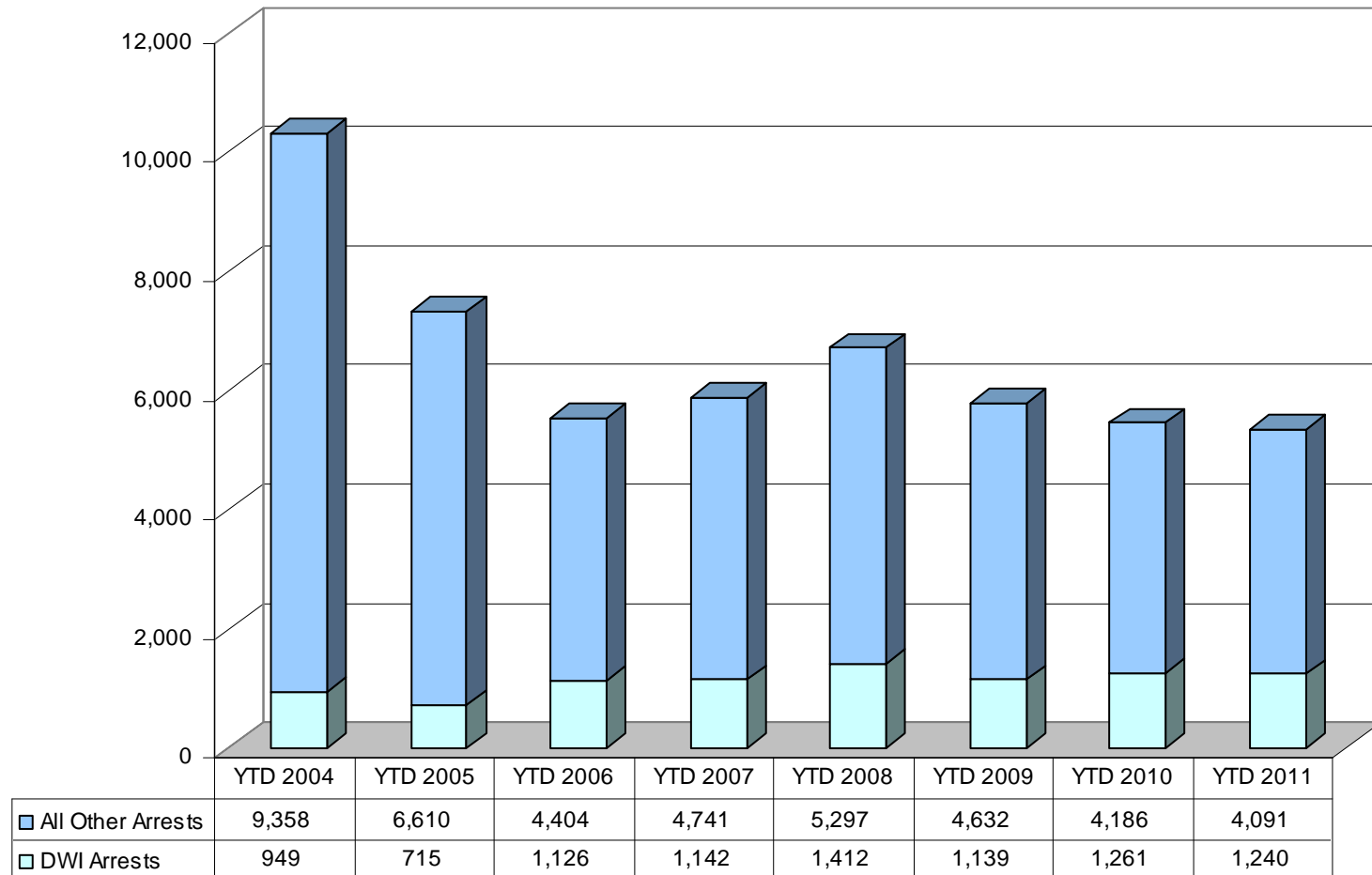
Comment: Accidents were up by 1.2% in 2011. There are many factors affecting these numbers, such as but not limited to, traffic enforcement, weather, amount of traffic, and road construction.

Traffic Accidents Worked by Police



Comment: DWI arrests were down 1.67%. In 2011, staff utilized grants to provide officer over-time to work DWI. This resulted in more contacts with the public and more public awareness to prevent drunk driving.

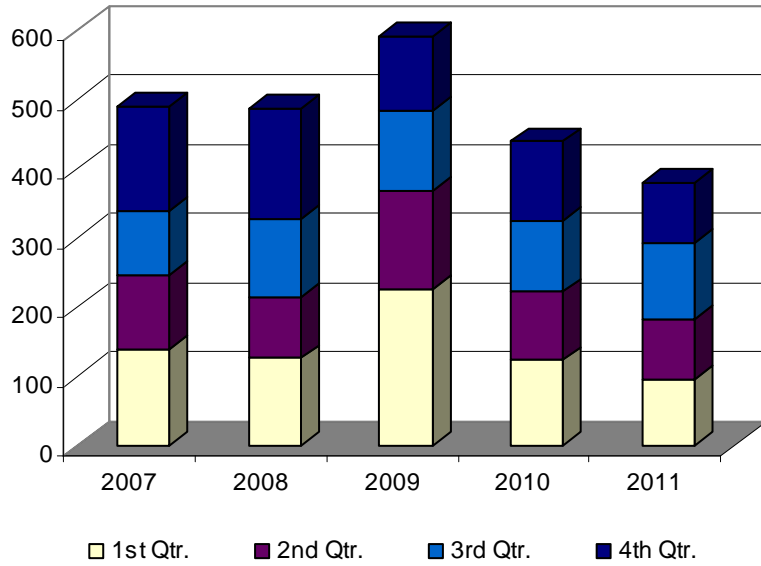
Police Arrests



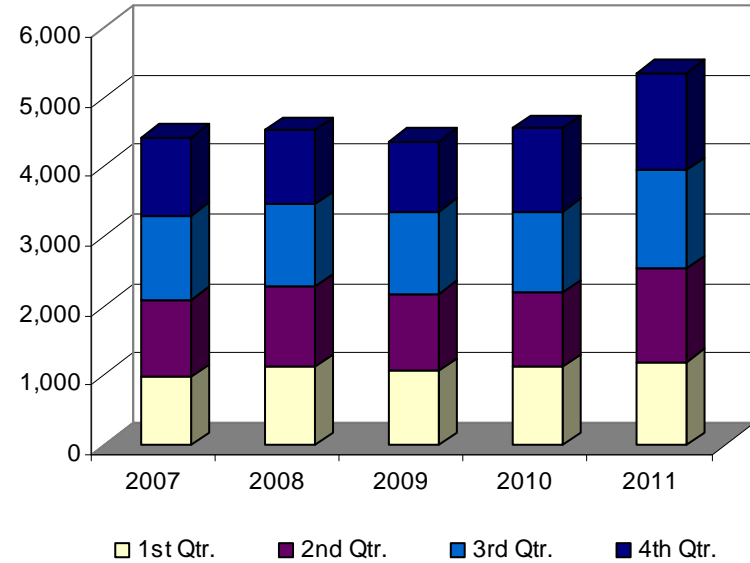
Comment: While the number of Fire Responses for 2011 fell by 10% from 2010, the number of EMS Responses increased by 18%. EMS responses account for 67.5% of total reported calls for service in 2011.

Fire Department Annual Calls for Service

Fire Responses



EMS Responses



Fire Responses

Year	1st Qtr.	2nd Qtr.	3rd Qtr.	4th Qtr.
2007	138	109	92	151
2008	126	89	113	160
2009	226	141	116	108
2010	123	99	103	114
2011	96	86	111	87

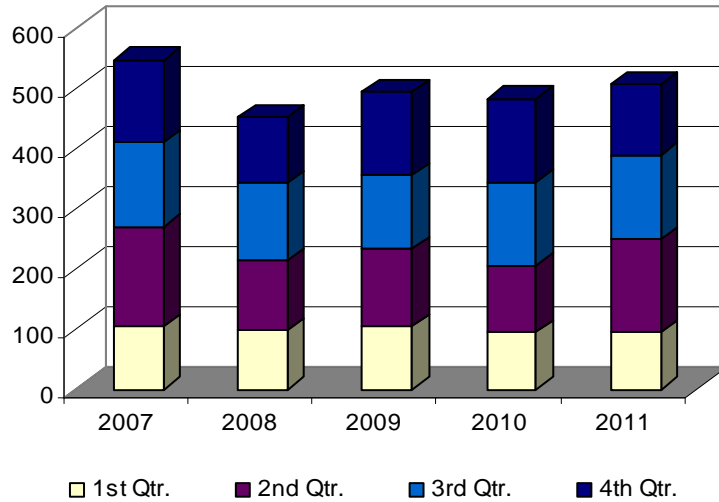
EMS Responses

Year	1st Qtr.	2nd Qtr.	3rd Qtr.	4th Qtr.
2007	986	1,103	1,214	1,125
2008	1,124	1,148	1,188	1,069
2009	1,065	1,108	1,188	1,006
2010	1,130	1,056	1,173	1,203
2011	1,195	1,350	1,415	1,386

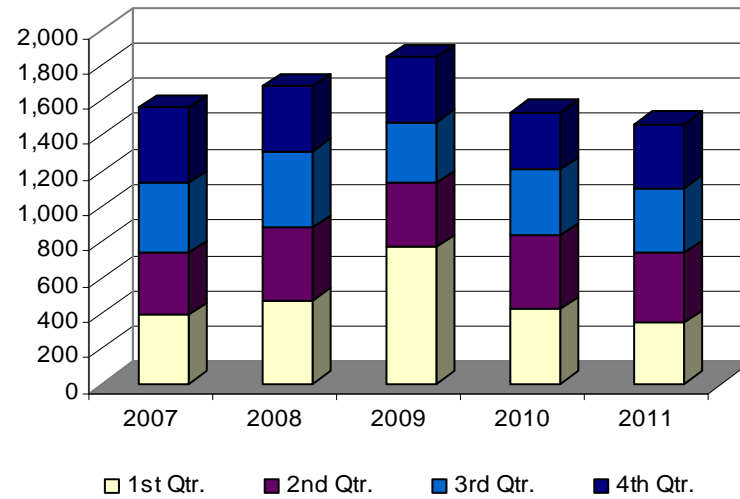
Comment: The number of rescue responses are up 5% over 2010, mainly due to the increase in the number of rescues during the severe flooding in April and May. Other responses are down by 104 or 8.6% compared with 2010.

Fire Department Annual Calls for Service

Rescue Responses



Other Responses



Rescue Responses

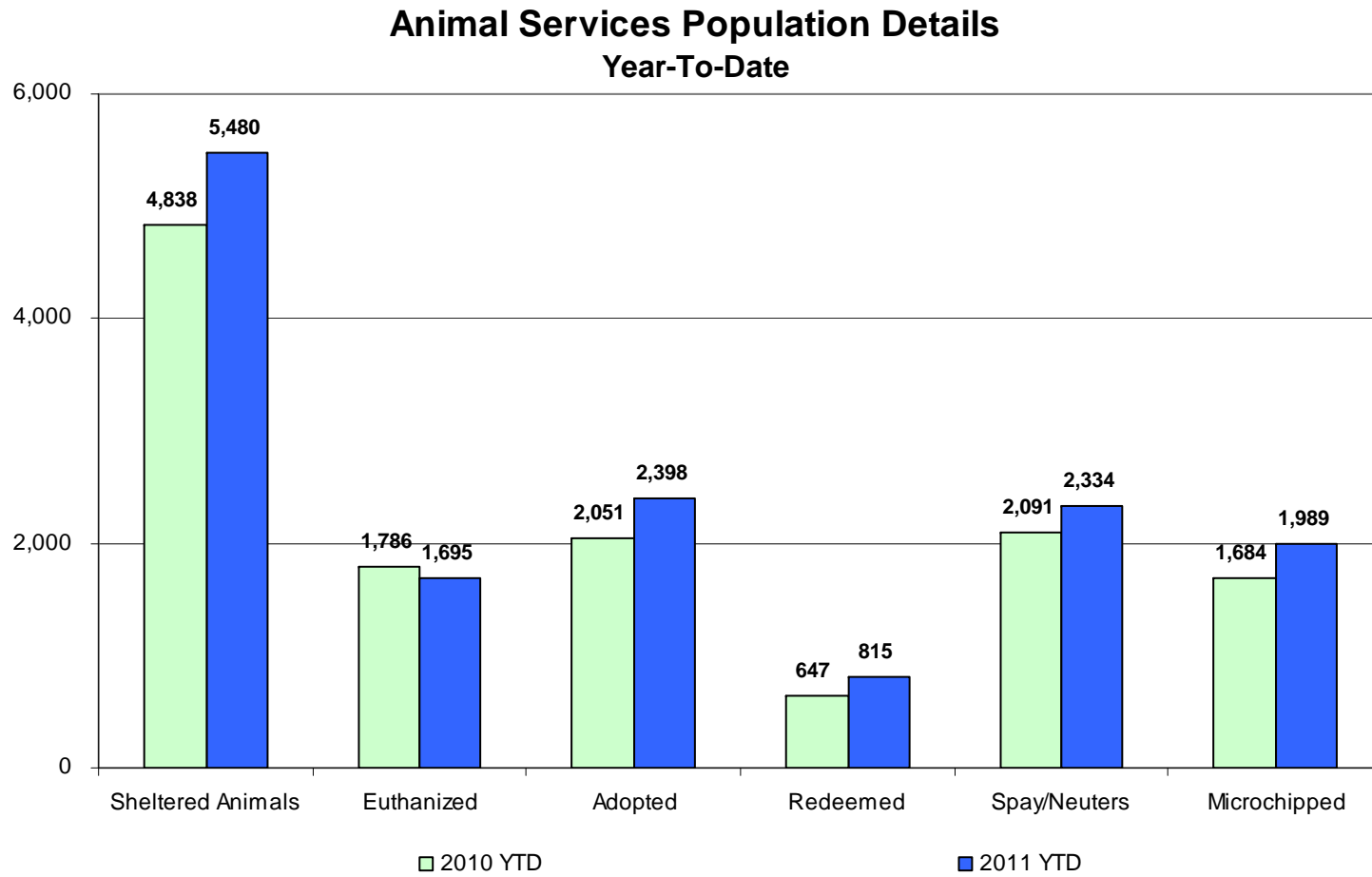
Year	1st Qtr.	2nd Qtr.	3rd Qtr.	4th Qtr.
2007	105	164	141	136
2008	98	116	128	109
2009	104	129	122	138
2010	94	111	139	138
2011	95	153	141	117

Other Responses*

Year	1st Qtr.	2nd Qtr.	3rd Qtr.	4th Qtr.
2007	386	352	395	424
2008	472	408	430	370
2009	770	363	343	366
2010	420	418	369	321
2011	343	393	367	361

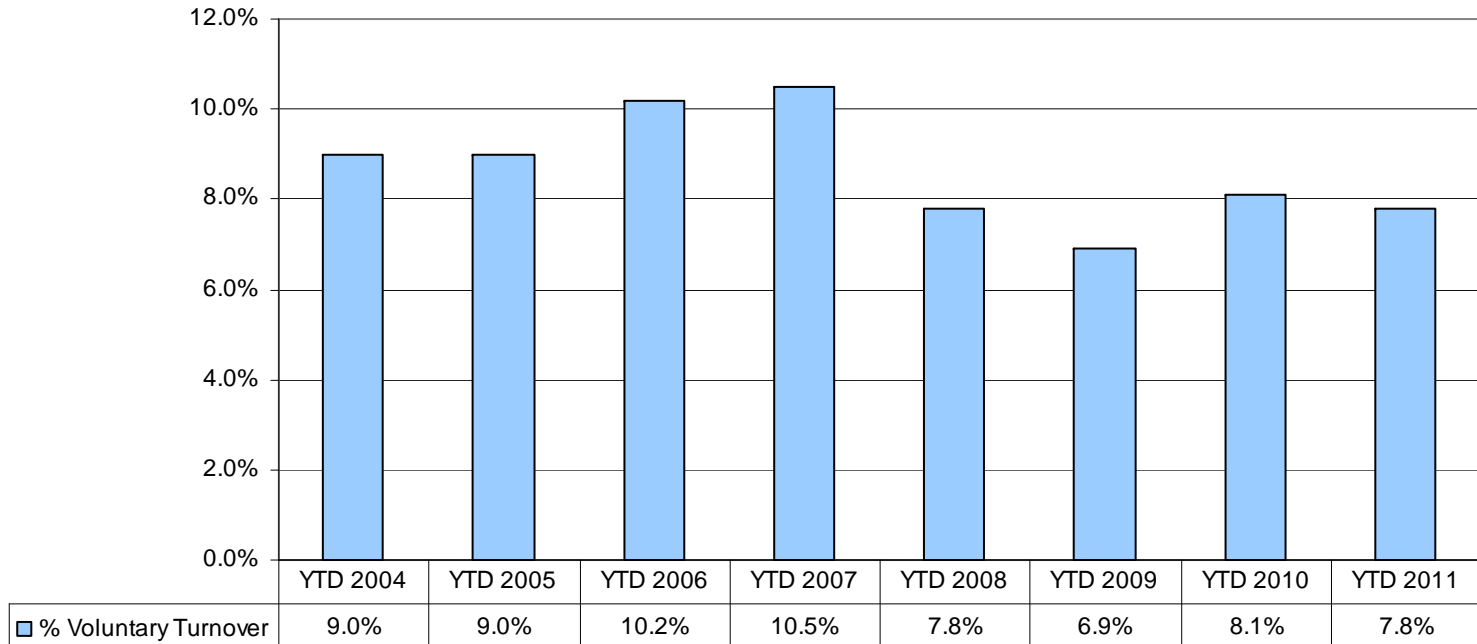
*Other responses consist of services calls, unknown substances, smoke in the area, smoke checks, vehicle accidents with no injury or entrapment, burning complaints, non-reportable haz-mats, or to assist a person.

Comment: This is a breakdown of the animals that enter the shelter system and their ultimate disposition status.



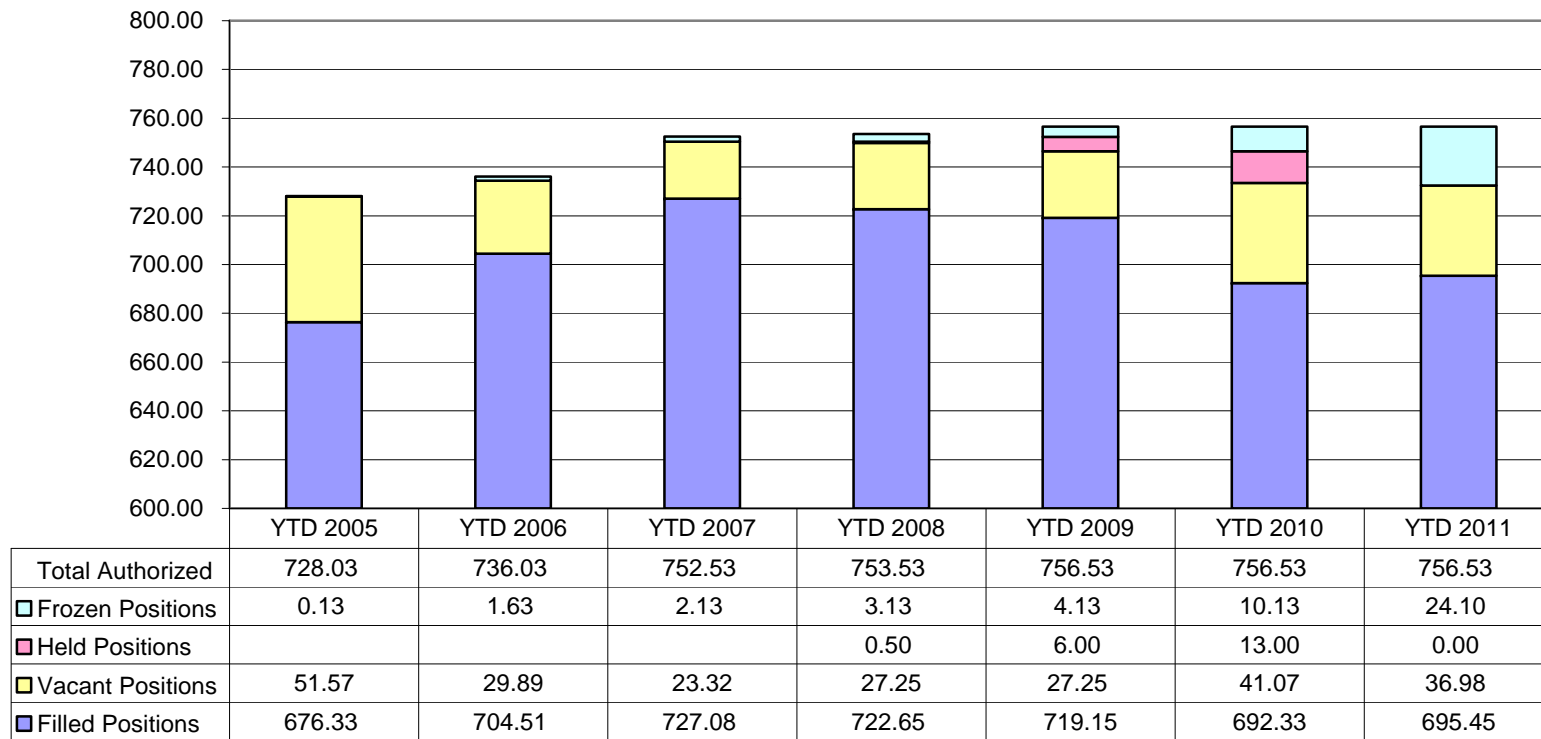
Comment: This chart reflects the percentage of employees who have voluntarily resigned within the year.

Percent of Voluntary Personnel Turnover



Comment: In addition to freezing 24.1 FTE's this year, the number of current vacancies were up slightly at year end compared to 2010.

Number of Authorized Employee Positions Compared to Positions Filled (Expressed in FTE's)



Due to 29.00 FTE's being added in the 2005 Adopted Budget, the vacant positions number would be higher than normal because of the hiring timeframe.

Budget Amendment Report - Fourth Quarter 2011

Heading Definitions:

FUND: Funding Source

DESCRIPTION: Budget Amendment Number and Description

ADOPTED BUDGET: Original Adopted Expense Budget

RE-BUDGETS: Re-appropriations from the previous fiscal year.

REVENUES: Budget Amendments that are funded from a source of funds other than Fund Balance.

FUND BALANCE: Budget Amendments coming from Fund Balance.

AMENDED BUDGET: Amended Expense Budget

Summary by Funding Source

FUND	ADOPTED BUDGET	RE-BUDGETS	REVENUES	FUND BALANCE	AMENDED BUDGET
1010 General	33,885,500	940,985	763,331	799,000	36,388,816
2100 Street	4,390,000	599,393	11,056	346,000	5,346,449
2130 Parking	1,065,100	61,112	-	4,000	1,130,212
2180 Community Development Block Grant	695,800	612,899	(89,814)	-	1,218,885
2230 Special State Grants	-	55,399	-	-	55,399
2240 Energy Block Grant	-	460,713	-	-	460,713
2250 Parks Development	2,424,600	4,338,063	39,685	22,000	6,824,348
2300 Impact Fee	1,260,000	6,411,656	-	-	7,671,656
2930 Drug Law Enforcement	494,000	31,650	-	-	525,650
3360 Fire Bond	424,800	-	26,578	-	451,378
3370 TIF Bond	63,700	-	-	50,687	114,387
3440 Sales Tax Bond	15,373,700	-	-	914,357	16,288,057
4270 Replacement & Disaster Recovery	45,100	136,797	875,000	125,000	1,181,897
4470 Sales Tax Capital Improvements	6,390,000	9,045,175	3,577,240	-	19,012,415
4480 Wastewater System Improvements Project	-	3,046,222	-	-	3,046,222
4520 Sales Tax Construction Bond	6,000	15,487,882	-	-	15,493,882
5400 Water & Sewer	30,901,000	13,695,918	4,479,160	134,930	49,211,008
5500 Solid Waste	9,208,300	1,748,821	-	50,000	11,007,121
5550 Airport	770,800	830,141	411,329	39,900	2,052,170
5600 Town Center	702,700	-	-	-	702,700
6800 Police Pension	1,692,800	-	-	-	1,692,800
6810 Fire Pension	1,480,400	-	-	-	1,480,400
9700 Shop	7,239,900	1,337,962	163,449	75,150	8,816,461
Grand Total	118,514,200	58,840,788	10,257,014	2,561,024	190,173,026

Budget Amendment Report - Fourth Quarter 2011 (Detail)

FUND	ADOPTED BUDGET	RE-BUDGETS	REVENUES	FUND BALANCE	AMENDED BUDGET
1010 General					
00 - ADOPTED BUDGET	33,885,500	-	-	-	33,885,500
01 - RE-APPROPRIATIONS	-	940,985	-	-	940,985
11-015 - Employee Banquet Donation	-	-	300	-	300
11-020 - Employee Banquet Donation	-	-	100	-	100
11-044 - Service Awards	-	-	-	390,000	390,000
11-074 - 2010 Dona Ani Svcs	-	-	17,464	-	17,464
11-129 - Life Vest-Walmart	-	-	2,000	-	2,000
11-144 - Service Awards Program	-	-	4,880	-	4,880
11-145 - PAC 1st Qtr Srv Fees	-	-	750	-	750
11-147 - CPR Certification	-	-	1,000	-	1,000
11-169 - Special Election	-	-	-	20,000	20,000
11-174 - Land Back/Habitat Huma	-	-	-	90,000	90,000
11-176 - Underage Drinking	-	-	31,500	-	31,500
11-186 - Econ Contract Chamber	-	-	-	299,000	299,000
11-200 - Drug Lab Clean Ups	-	-	8,000	-	8,000
11-229 - 2011-2012 JAG Award	-	-	88,866	-	88,866
11-230 - IRS Task Force	-	-	41,405	-	41,405
11-231 - STEP 2011-2012	-	-	117,700	-	117,700
11-243 - Recognize Donations	-	-	31,943	-	31,943
11-245 - Mold Remed Station 3	-	-	12,170	-	12,170
11-279 - Bulletproof Vest Grant	-	-	4,550	-	4,550
11-315 - Donations	-	-	235	-	235
11-316 - State & Fed Forfeiture	-	-	372,107	-	372,107
11-318 - Porter Donation	-	-	20,000	-	20,000
11-327 - ASPCA Scholarship	-	-	1,561	-	1,561
11-329 - Officer Award Banquet	-	-	1,800	-	1,800
11-330 - ICAC Task Force Prog	-	-	5,000	-	5,000
1010 General Total	33,885,500	940,985	763,331	799,000	36,388,816

Budget Amendment Report - Fourth Quarter 2011 (Detail)

FUND	ADOPTED BUDGET	RE-BUDGETS	REVENUES	FUND BALANCE	AMENDED BUDGET
2100 Street					
00 - ADOPTED BUDGET	4,390,000	-	-	-	4,390,000
01 - RE-APPROPRIATIONS	-	599,393	-	-	599,393
11-044 - Service Awards	-	-	-	60,000	60,000
11-133 - Phase II Radio Project	-	-	-	286,000	286,000
11-314 - FEMA Projects Reimburs	-	-	11,056	-	11,056
2100 Street Total	4,390,000	599,393	11,056	346,000	5,346,449
2130 Parking					
00 - ADOPTED BUDGET	1,065,100	-	-	-	1,065,100
01 - RE-APPROPRIATIONS	-	61,112	-	-	61,112
11-044 - Service Awards	-	-	-	4,000	4,000
2130 Parking Total	1,065,100	61,112	-	4,000	1,130,212
2180 Community Development Block Grant					
00 - ADOPTED BUDGET	695,800	-	-	-	695,800
01 - RE-APPROPRIATIONS	-	612,899	-	-	612,899
11-097 - Ranger's Pantry Donate	-	-	1,619	-	1,619
11-130 - Annual Grant Amount	-	-	(91,911)	-	(91,911)
11-175 - Rangers Pantry/Fest Al	-	-	478	-	478
2180 Community Development Block Grant Total	695,800	612,899	(89,814)	-	1,218,885
2230 Special State Grants					
01 - RE-APPROPRIATIONS	-	55,399	-	-	55,399
2230 Special State Grants Total	-	55,399	-	-	55,399
2240 Energy Block Grant					
01 - RE-APPROPRIATIONS	-	460,713	-	-	460,713
2240 Energy Block Grant Total	-	460,713	-	-	460,713

Budget Amendment Report - Fourth Quarter 2011 (Detail)

FUND	ADOPTED BUDGET	RE-BUDGETS	REVENUES	FUND BALANCE	AMENDED BUDGET
2250 Parks Development					
00 - ADOPTED BUDGET	2,424,600	-	-	-	2,424,600
01 - RE-APPROPRIATIONS	-	4,338,063	-	-	4,338,063
11-017 - Niokaska Restoration	-	-	4,896	-	4,896
11-044 - Service Awards	-	-	-	22,000	22,000
11-313 - Walker Park Baseball	-	-	1,189	-	1,189
11-326 - Walker Baseball Prog	-	-	33,600	-	33,600
2250 Parks Development Total	2,424,600	4,338,063	39,685	22,000	6,824,348
2300 Impact Fee					
00 - ADOPTED BUDGET	1,260,000	-	-	-	1,260,000
01 - RE-APPROPRIATIONS	-	6,411,656	-	-	6,411,656
2300 Impact Fee Total	1,260,000	6,411,656	-	-	7,671,656
2930 Drug Law Enforcement					
00 - ADOPTED BUDGET	494,000	-	-	-	494,000
01 - RE-APPROPRIATIONS	-	31,650	-	-	31,650
2930 Drug Law Enforcement Total	494,000	31,650	-	-	525,650
3360 Fire Bond					
00 - ADOPTED BUDGET	424,800	-	-	-	424,800
11-394 - Close Fire Bond	-	-	26,578	-	26,578
3360 Fire Bond Total	424,800	-	26,578	-	451,378
3370 TIF Bond					
00 - ADOPTED BUDGET	63,700	-	-	-	63,700
11-033 - Bond Redemption	-	-	-	50,687	50,687
3370 TIF Bond Total	63,700	-	-	50,687	114,387

Budget Amendment Report - Fourth Quarter 2011 (Detail)

FUND	ADOPTED BUDGET	RE-BUDGETS	REVENUES	FUND BALANCE	AMENDED BUDGET
3440 Sales Tax Bond					
00 - ADOPTED BUDGET	15,373,700	-	-	-	15,373,700
11-374 - Additional Principal	-	-	-	914,357	914,357
3440 Sales Tax Bond Total	15,373,700	-	-	914,357	16,288,057
4270 Replacement & Disaster Recovery					
00 - ADOPTED BUDGET	45,100	-	-	-	45,100
01 - RE-APPROPRIATIONS	-	136,797	-	-	136,797
11-140 - Fed/St Disaster Grant	-	-	875,000	125,000	1,000,000
4270 Replacement & Disaster Recovery Total	45,100	136,797	875,000	125,000	1,181,897
4470 Sales Tax Capital Improvements					
00 - ADOPTED BUDGET	6,390,000	-	-	-	6,390,000
01 - RE-APPROPRIATIONS	-	9,045,175	-	-	9,045,175
11-005 - Fay Econ Dev Corridor	-	-	296,682	-	296,682
11-134 - Cato Springs Road	-	-	2,879,679	-	2,879,679
11-168 - Town Branch Trail	-	-	270,000	-	270,000
11-189 - Hwy 16 Tree/Fence Dona	-	-	22,329	-	22,329
11-317 - Sale of Unit 27	-	-	28,550	-	28,550
11-328 - Lake Fay South Trail	-	-	80,000	-	80,000
4470 Sales Tax Capital Improvements Total	6,390,000	9,045,175	3,577,240	-	19,012,415
4480 Wastewater System Improvements Project					
01 - RE-APPROPRIATIONS	-	3,046,222	-	-	3,046,222
4480 Wastewater System Improvements Project Total	-	3,046,222	-	-	3,046,222
4520 Sales Tax Construction Bond					
00 - ADOPTED BUDGET	6,000	-	-	-	6,000
01 - RE-APPROPRIATIONS	-	15,487,882	-	-	15,487,882
4520 Sales Tax Construction Bond Total	6,000	15,487,882	-	-	15,493,882

Budget Amendment Report - Fourth Quarter 2011 (Detail)

FUND	ADOPTED BUDGET	RE-BUDGETS	REVENUES	FUND BALANCE	AMENDED BUDGET
5400 Water & Sewer					
00 - ADOPTED BUDGET	30,901,000	-	-	-	30,901,000
01 - RE-APPROPRIATIONS	-	13,695,918	-	-	13,695,918
11-004 - W&S Ops Efficiency	-	-	-	35,000	35,000
11-012 - Power/Stone Mtn Pump	-	-	45,751	-	45,751
11-044 - Service Awards	-	-	-	85,000	85,000
11-058 - Impact Fee Funds	-	-	1,110,331	-	1,110,331
11-079 - HWY 265/Garney	-	-	2,241,120	-	2,241,120
11-089 - STAG Grant/Elkins Sew	-	-	485,000	-	485,000
11-199 - Flood Repair	-	-	-	14,930	14,930
11-246 - Recognize Cost Share	-	-	596,958	-	596,958
5400 Water & Sewer Total	30,901,000	13,695,918	4,479,160	134,930	49,211,008
5500 Solid Waste					
00 - ADOPTED BUDGET	9,208,300	-	-	-	9,208,300
01 - RE-APPROPRIATIONS	-	1,748,821	-	-	1,748,821
11-044 - Service Awards	-	-	-	50,000	50,000
5500 Solid Waste Total	9,208,300	1,748,821	-	50,000	11,007,121
5550 Airport					
00 - ADOPTED BUDGET	770,800	-	-	-	770,800
01 - RE-APPROPRIATIONS	-	830,141	-	-	830,141
11-044 - Service Awards	-	-	-	3,900	3,900
11-099 - Airport Security	-	-	144,000	36,000	180,000
11-159 - Eng Pave/Remark Proj	-	-	-	22,830	22,830
11-215 - Grant Rev/Restore FB	-	-	251,472	(22,830)	228,642
11-314 - FEMA Projects Reimburs	-	-	15,857	-	15,857
5550 Airport Total	770,800	830,141	411,329	39,900	2,052,170

Budget Amendment Report - Fourth Quarter 2011 (Detail)

FUND	ADOPTED BUDGET	RE-BUDGETS	REVENUES	FUND BALANCE	AMENDED BUDGET
5600 Town Center					
00 - ADOPTED BUDGET	702,700	-	-	-	702,700
5600 Town Center Total	702,700	-	-	-	702,700
6800 Police Pension					
00 - ADOPTED BUDGET	1,692,800	-	-	-	1,692,800
6800 Police Pension Total	1,692,800	-	-	-	1,692,800
6810 Fire Pension					
00 - ADOPTED BUDGET	1,480,400	-	-	-	1,480,400
6810 Fire Pension Total	1,480,400	-	-	-	1,480,400
9700 Shop					
00 - ADOPTED BUDGET	7,239,900	-	-	-	7,239,900
01 - RE-APPROPRIATIONS	-	1,337,962	-	-	1,337,962
11-006 - Tractor Solar Drying	-	-	72,675	-	72,675
11-007 - Tax on Spreader-Drying	-	-	1,850	-	1,850
11-008 - Sales Tax Walking Tr	-	-	4,450	-	4,450
11-023 - Unit 9059 Replacement	-	-	-	20,500	20,500
11-044 - Service Awards	-	-	-	15,000	15,000
11-047 - Replace Unit 459	-	-	-	6,500	6,500
11-080 - Manure Conveyors	-	-	44,040	-	44,040
11-081 - Top Dresser for Parks	-	-	5,793	14,107	19,900
11-082 - Replace Unit 2025	-	-	16,733	7,867	24,600
11-083 - Purchase of Unit #1127	-	-	3,640	8,284	11,924
11-084 - Replace Unit #2018	-	-	11,171	2,892	14,063
11-216 - Replace Unit 2018	-	-	3,097	-	3,097
9700 Shop Total	7,239,900	1,337,962	163,449	75,150	8,816,461
Grand Total	118,514,200	58,840,788	10,257,014	2,561,024	190,173,026