

CITY OF FAYETTEVILLE, ARKANSAS QUARTERLY MANAGEMENT REPORT

Third Quarter 2011

MAYOR

Lioneld Jordan

CITY COUNCIL

Adella Gray
Mark Kinion
Justin Tennant
Rhonda Adams

Ward 1, Position 1
Ward 2, Position 1
Ward 3, Position 1
Ward 4, Position 1

Brenda Thiel
Matthew Petty
Bobby Ferrell
Sarah Lewis

Ward 1, Position 2
Ward 2, Position 2
Ward 3, Position 2
Ward 4, Position 2

ELECTED OFFICIALS

Kit Williams - City Attorney
Sondra Smith - City Clerk/Treasurer
Rudy Moore, Jr. - District Court Judge

SENIOR DEPARTMENT DIRECTORS / EXECUTIVE STAFF

Paul A. Becker - Finance Director
Connie Edmonston - Parks & Recreation Director
David Jurgens - Utilities Director
Jeremy Pate - Development Services Director
Greg Tabor - Police Chief

David Dayringer - Fire Chief
Terry Gulley - Transportation Services Director
Don Marr - Chief of Staff
Lindsley Smith - Communications Director

2011 THIRD QUARTER -- TABLE OF CONTENTS

| | | |
|-------|-------------------------------------------------|-------|
| I. | SPECIAL EVENT STATISTICS | 1 |
| II. | FINANCE | |
| | City Sales Tax | 2 |
| | City's Portion of the County Sales Tax | 3 |
| | Franchise Fees | 4 |
| | Parks Development HMR Tax | 5 |
| | State Turnback – General and Street Funds | 6 |
| | District Court Activity | 7-8 |
| III. | BUILDING RELATED ACTIVITIES | |
| | Building Permits | 9 |
| | Building Permit Fees Collected | 10 |
| | Code Compliance Service Requests | 11 |
| | Dwelling Units Approved | 12 |
| | Non Residential Square Footage Approved | 13 |
| IV. | ENTERPRISE ACTIVITIES | |
| | Airport..... | 14-15 |
| | Water & Sewer | 16-21 |
| | Solid Waste & Recycling | 22-25 |
| V. | TRANSPORTATION & RECREATION | |
| | Street Operations | 26-27 |
| | Trails | 28 |
| | Transportation Bond Program | 29 |
| | Parks & Recreation | 30-31 |
| | Library | 32-33 |
| VI. | PUBLIC SAFETY | |
| | Police | 34-37 |
| | Fire | 38-39 |
| | Animal Services | 40 |
| VII. | INTERNAL ACTIVITIES | |
| | Human Resources | 41-42 |
| VIII. | BUDGET ADMENDMENTS | |
| | Summary by Funding Source..... | 43 |
| | Detail by Fund | 44-47 |

Special Events which affect the City:

During the third quarter of 2011, sales taxes continued to increase over projections. Year-to-date gains for the General Fund combined sales taxes were approximately \$853,000. Based on the 2010 census Fayetteville receives a smaller portion of the County sales tax distributions because of Springdale's dramatic population growth. However, county sales taxes are still 2% over prior year.

Year-to-date building permits are also doing somewhat better than budget projections primarily because of permitting related to new construction activity at the Fayetteville high school.

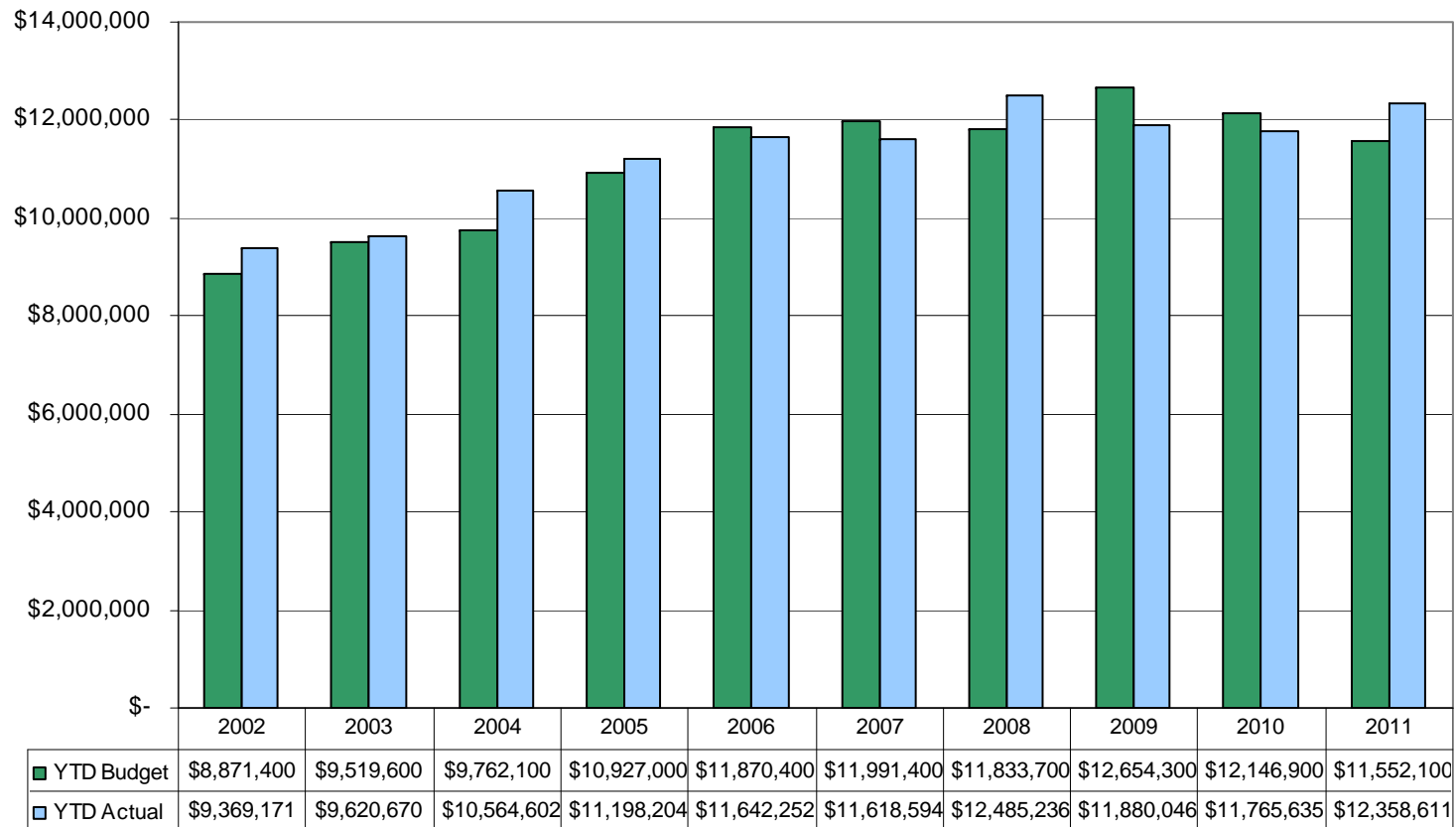
For project updates:

Transportation Bond Issue:

http://www.accessfayetteville.org/government/projects/Transportation_Improvement_Bond_Program/index.cfm

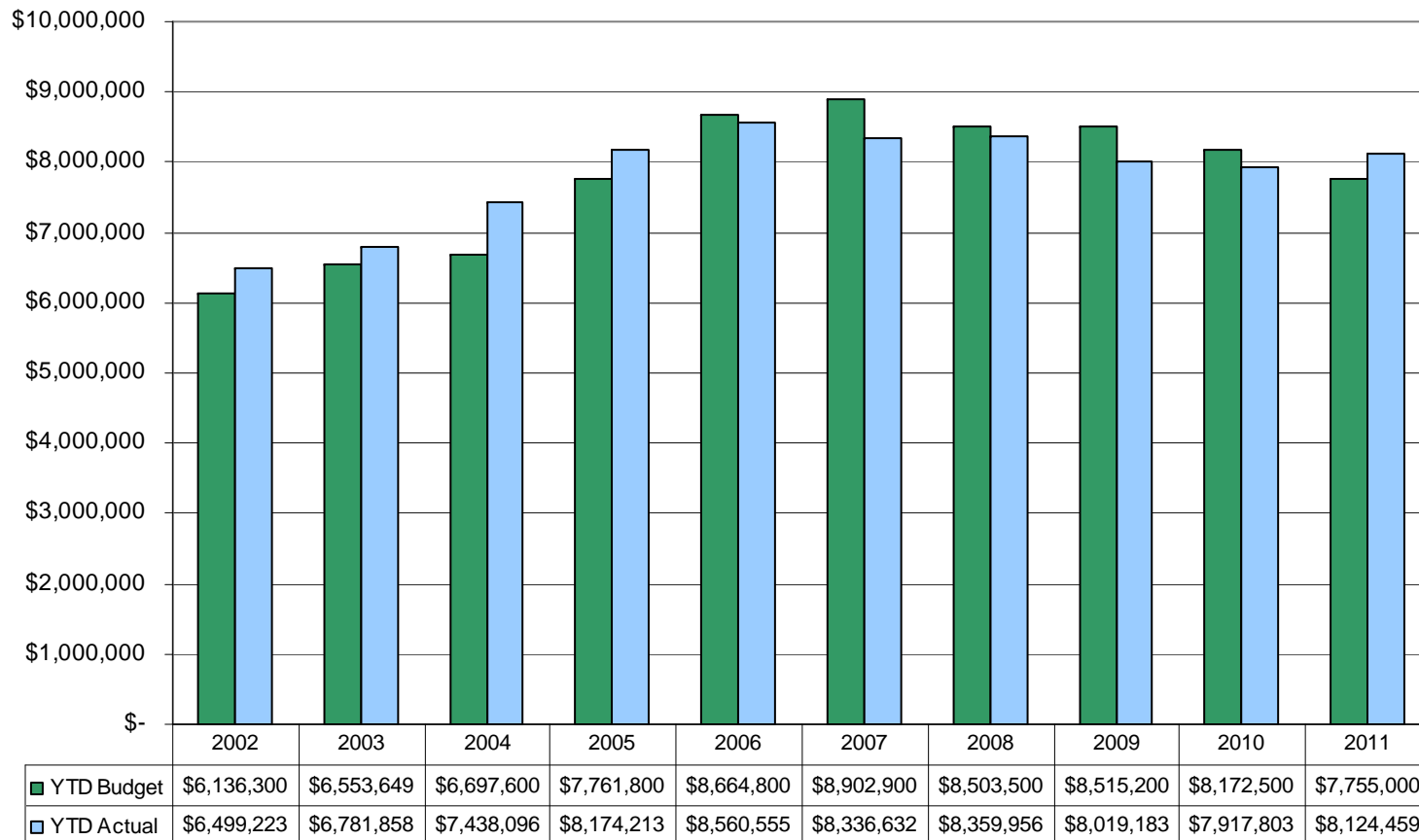
Comment: Year to date City sales tax collections at the end of the third quarter were up 5.0% compared to last year. This is a 6.5% increase over budget or \$806,511.

City Sales Tax Adopted Budgeted Revenues Compared to Actual Collections Year-to-Date



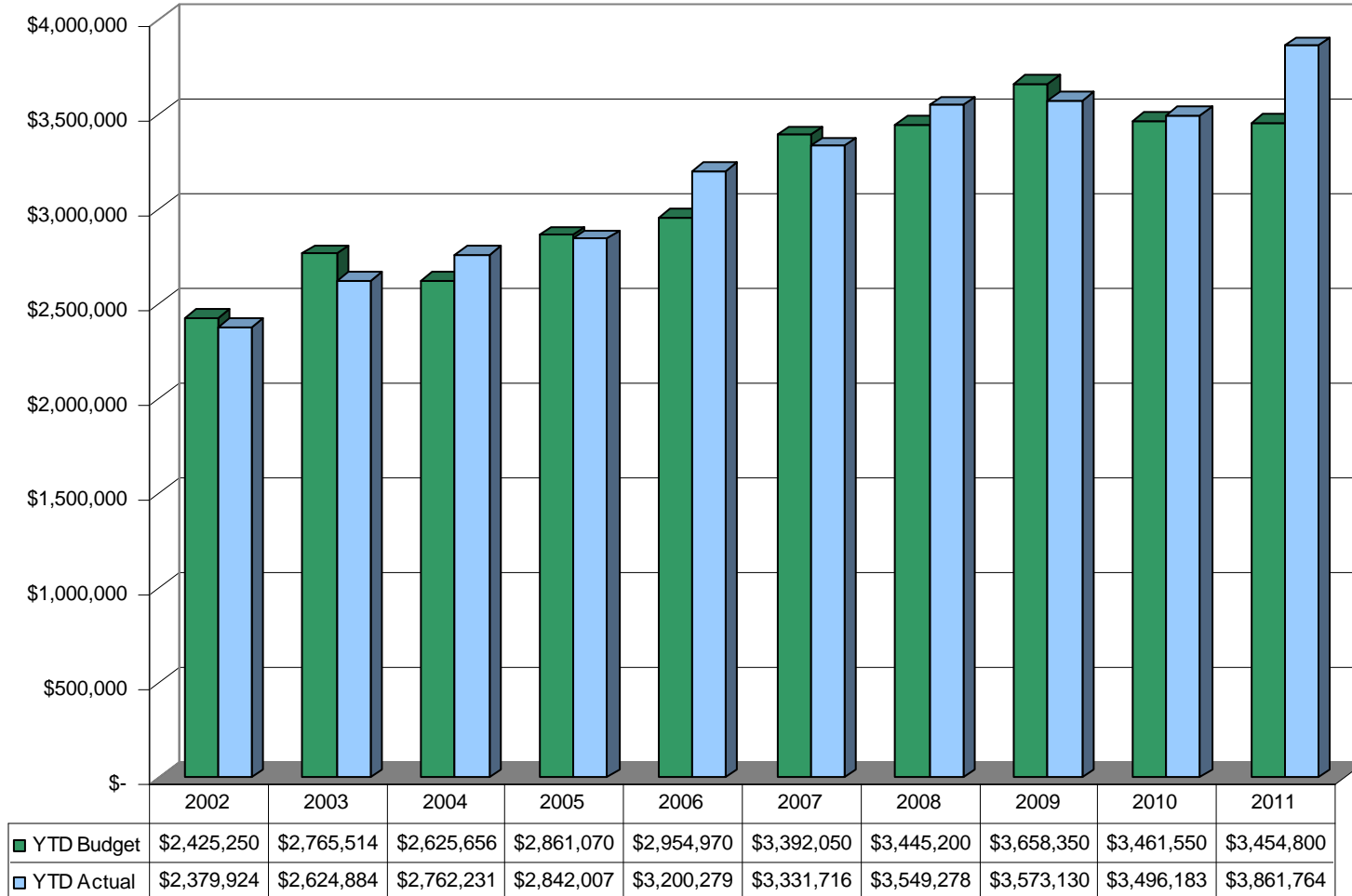
Comment: Year to date, the City's portion of county sales tax was up 4.5% compared to budget but up only 2.6% compared to last year. The City portion of county sales tax was reduced by the 2010 census.

City's Portion of the County Sales Tax Adopted Budgeted Revenues Compared to Actual Collections Year-to-Date



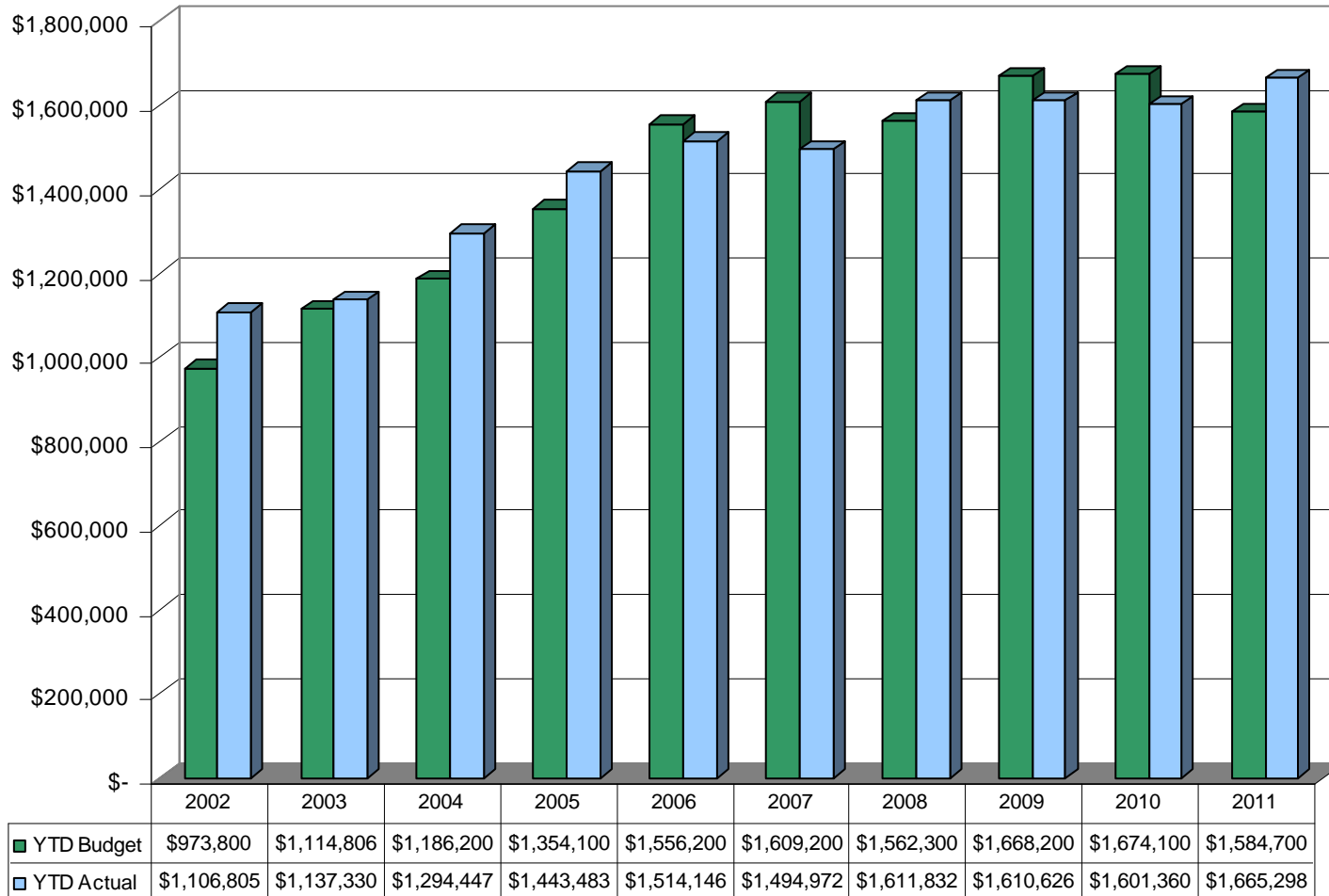
Comment: Franchise fee receipts are 2% ahead of prior year so far.

Franchise Fees



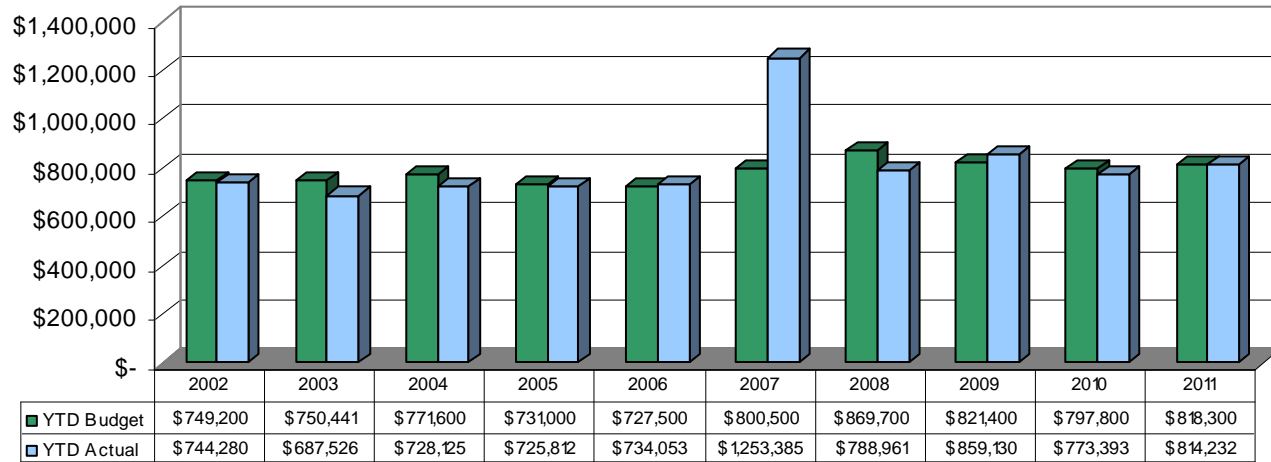
Comment: HMR taxes were 4.79% over last year during the third quarter. This was 4.8% over budget.

Parks Development HMR Tax

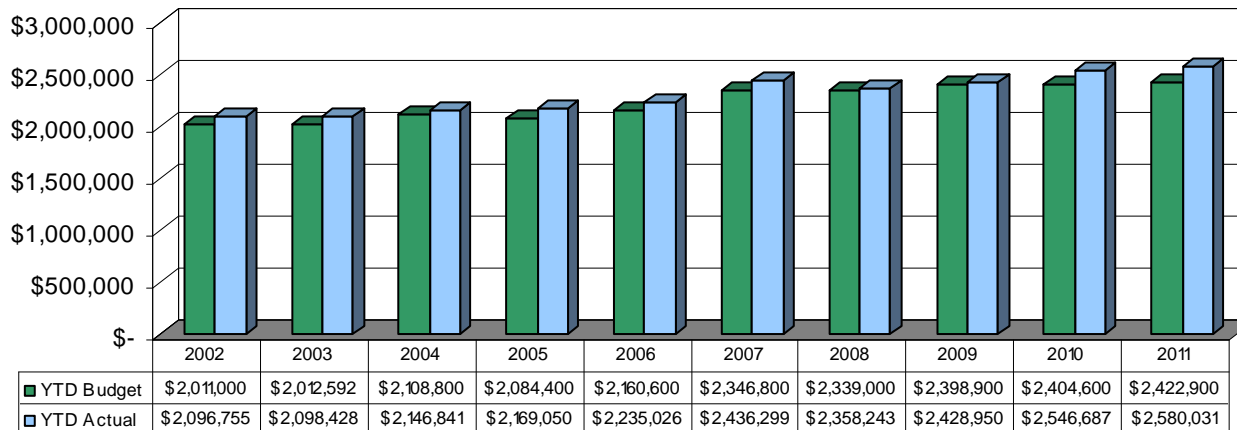


Comment: During the third quarter, State Turnback was 5.28% over last year for General Fund and 1.31% for Street Turnback. Turnback receipts also exceed budget in both cases.

State Turnback - General Fund



State Turnback - Street Fund



Comment:

District Court Cases

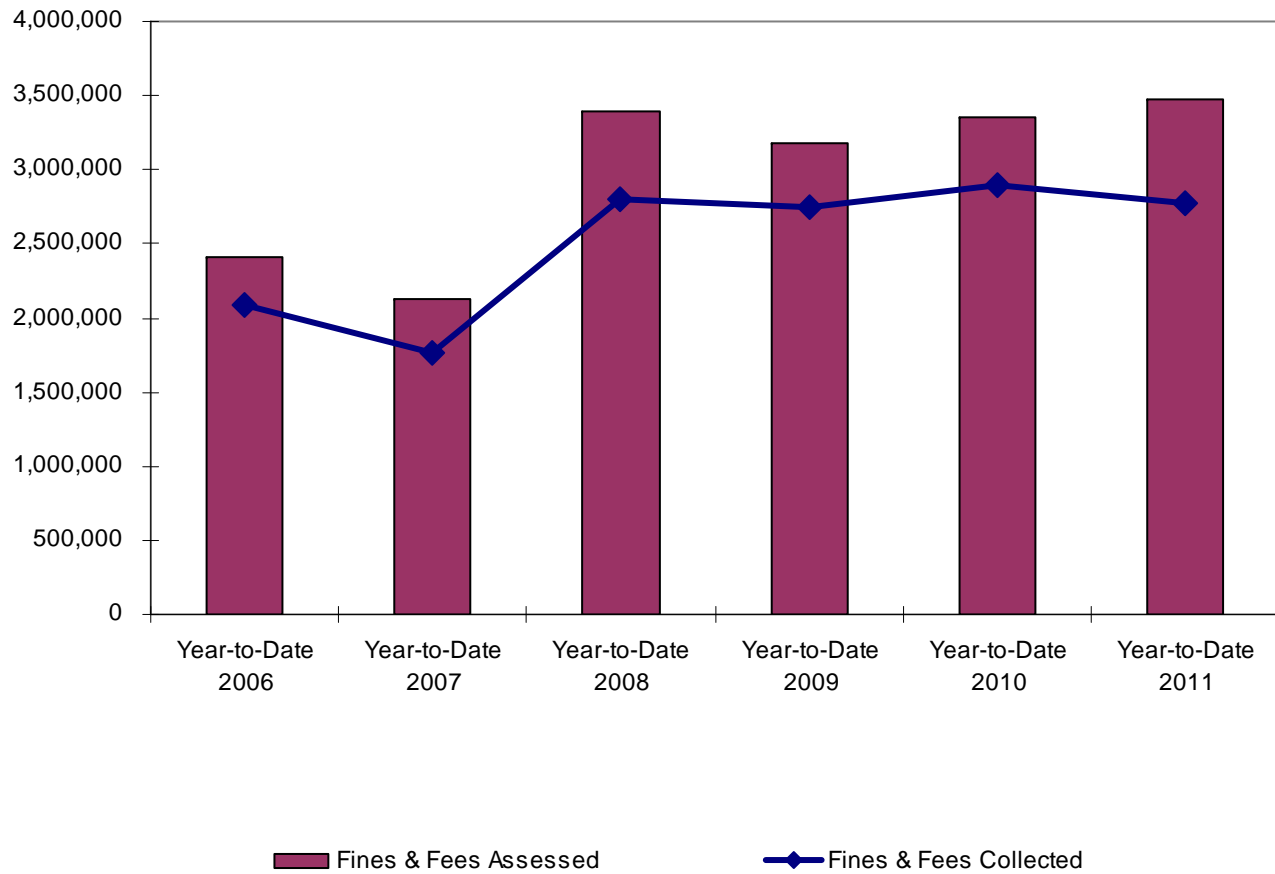
| | 2006 | 2007 | 2008 | 2009 | 2010 | 2011 |
|--------------------------------------------|--------------|--------------|--------------|--------------|--------------|--------------|
| | Year-to-Date | Year-to-Date | Year-to-Date | Year-to-Date | Year-to-Date | Year-to-Date |
| Criminal | | | | | | |
| Cases Filed | 19,813 | 21,134 | 23,590 | 22,632 | 22,118 | 19,953 |
| Cases Adjudicated | 15,352 | 18,475 | 26,531 | 29,042 | 26,636 | 23,830 |
| Probation | | | | | | |
| Interviews Conducted | 530 | 512 | 494 | 997 | 628 | 523 |
| Persons / Hours of Public Service Assigned | 107 / 3,461 | 85 / 1,970 | 59 / 2,714 | 100 / 5,447 | 628 / 3,421 | 228 / 5,787 |
| Small Claims | | | | | | |
| Cases Filed | 1,309 | 1,311 | 1,723 | 2,291 | 2,229 | 2,451 |

District Court Fines & Fees

| | 2006 | 2007 | 2008 | 2009 | 2010 | 2011 |
|--------------------------|--------------|--------------|--------------|--------------|--------------|--------------|
| | Year-to-Date | Year-to-Date | Year-to-Date | Year-to-Date | Year-to-Date | Year-to-Date |
| Fines & Fees Assessed | 2,410,123 | 2,129,694 | 3,400,625 | 3,173,212 | 3,356,209 | 3,470,906 |
| Fines & Fees Collected | 2,082,810 | 1,758,605 | 2,805,935 | 2,741,971 | 2,893,495 | 2,780,092 |
| Fines & Fees Uncollected | 327,313 | 371,089 | 594,690 | 431,241 | 462,714 | 690,814 |
| % of Fees Collected | 86% | 83% | 83% | 86% | 86% | 80% |

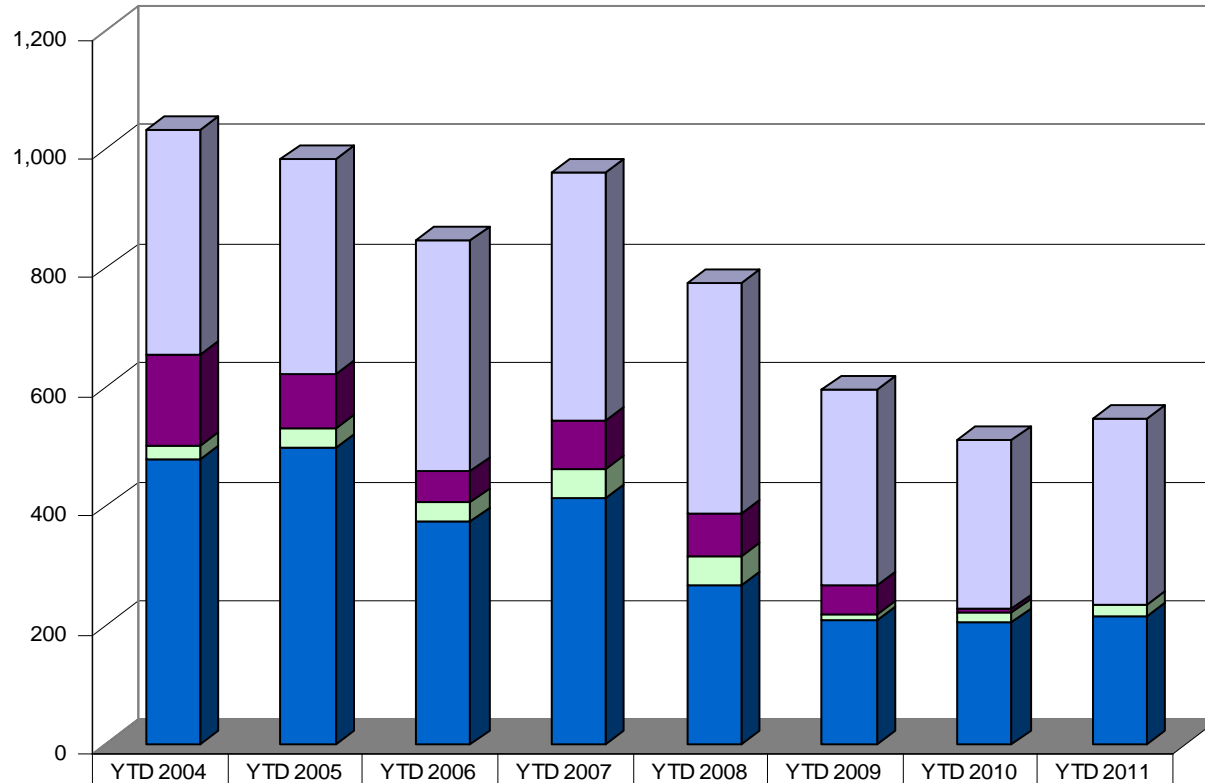
Comment:

District Court Fines & Fees



Comment: Building permits issued continue to increase slightly over the previous two years.

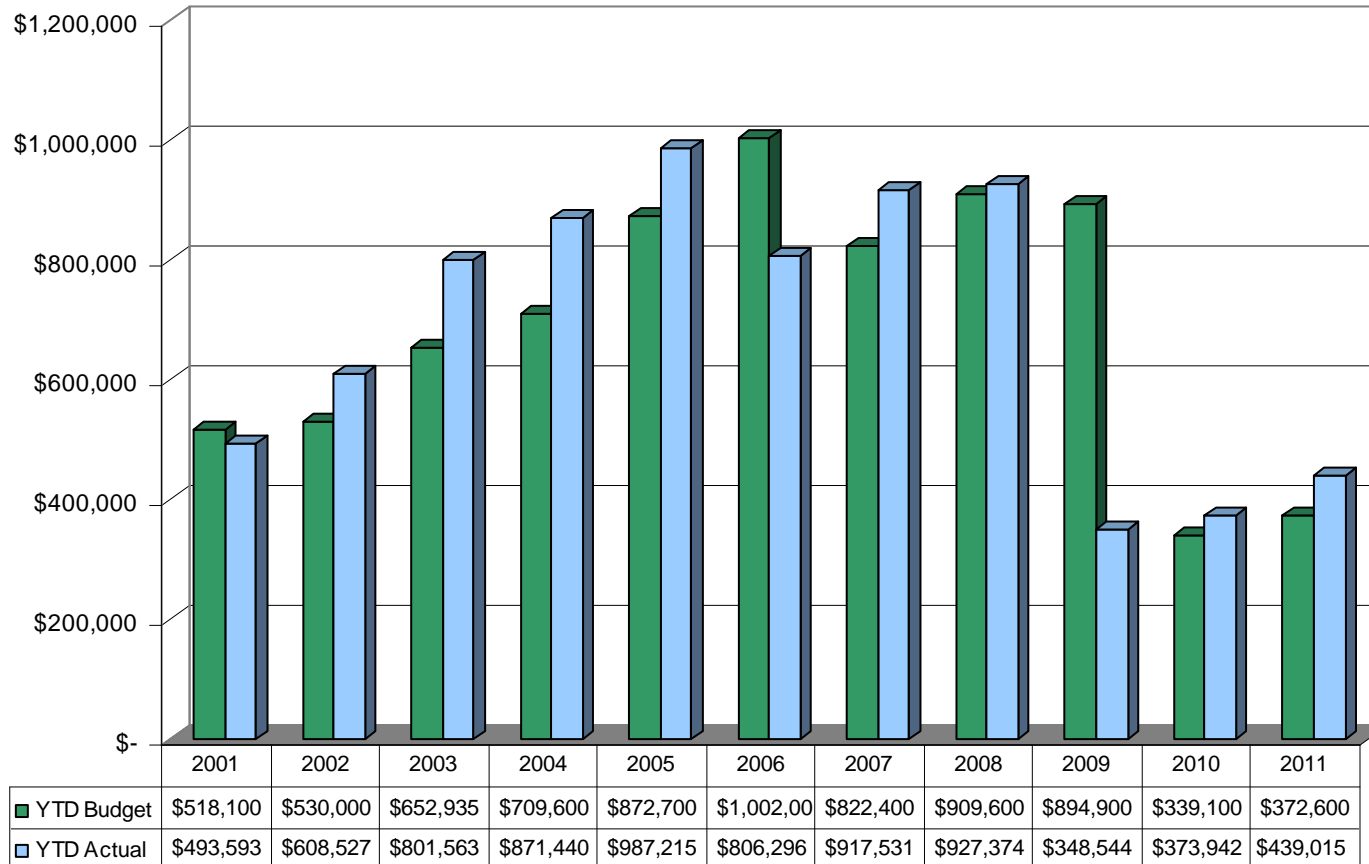
Total Building Permits Issued Year to Date



| | YTD 2004 | YTD 2005 | YTD 2006 | YTD 2007 | YTD 2008 | YTD 2009 | YTD 2010 | YTD 2011 |
|-------------------------------|----------|----------|----------|----------|----------|----------|----------|----------|
| ■ Additions/Alterations/Misc. | 376 | 362 | 390 | 418 | 386 | 328 | 281 | 311 |
| ■ New Multi-Family | 153 | 91 | 51 | 80 | 74 | 48 | 8 | 2 |
| ■ New Commercial | 22 | 30 | 33 | 49 | 49 | 11 | 16 | 17 |
| ■ New Single-Family Detached | 479 | 499 | 373 | 414 | 265 | 207 | 204 | 215 |

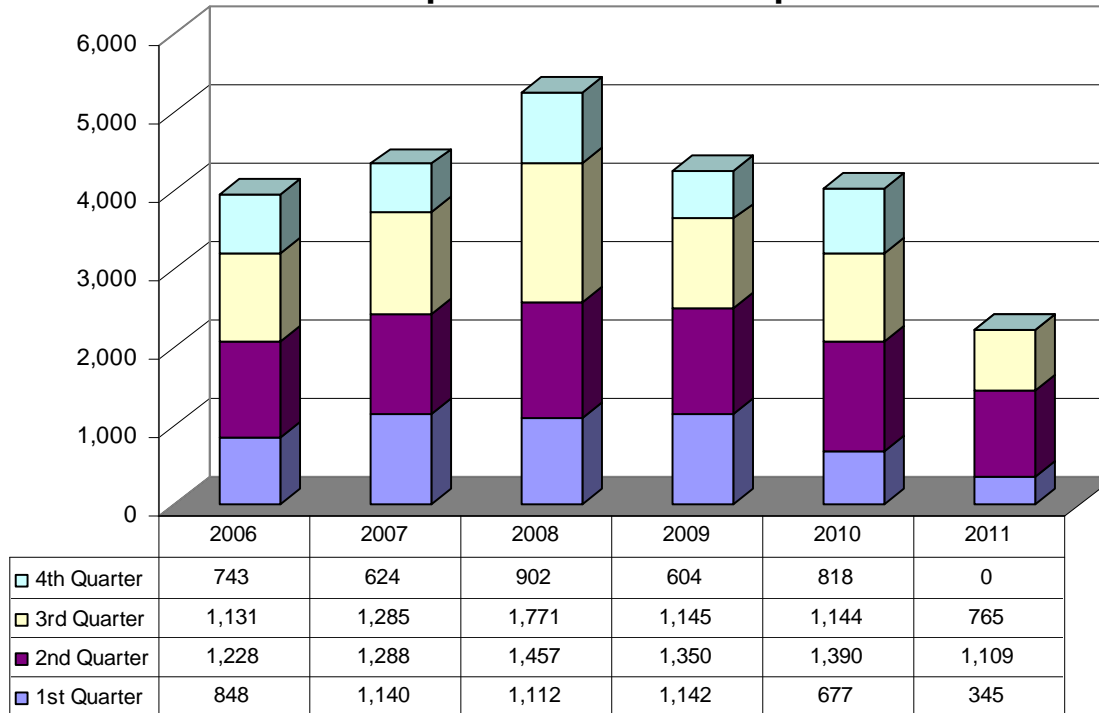
Comment: Revenue collections are well above budgeted projections through the third quarter, due in part to the new high school construction.

Building Permit Fees Collected Year-to-Date



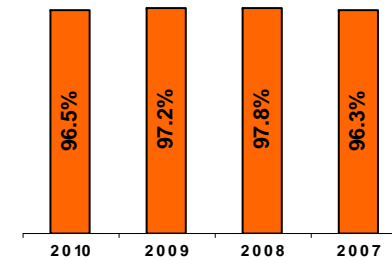
Comment: The top graph shows the amount of requests for service the Code Compliance Program works annually by quarter. The bottom graph reflects the violation abatement success rate for the past four years.

Code Compliance Service Requests



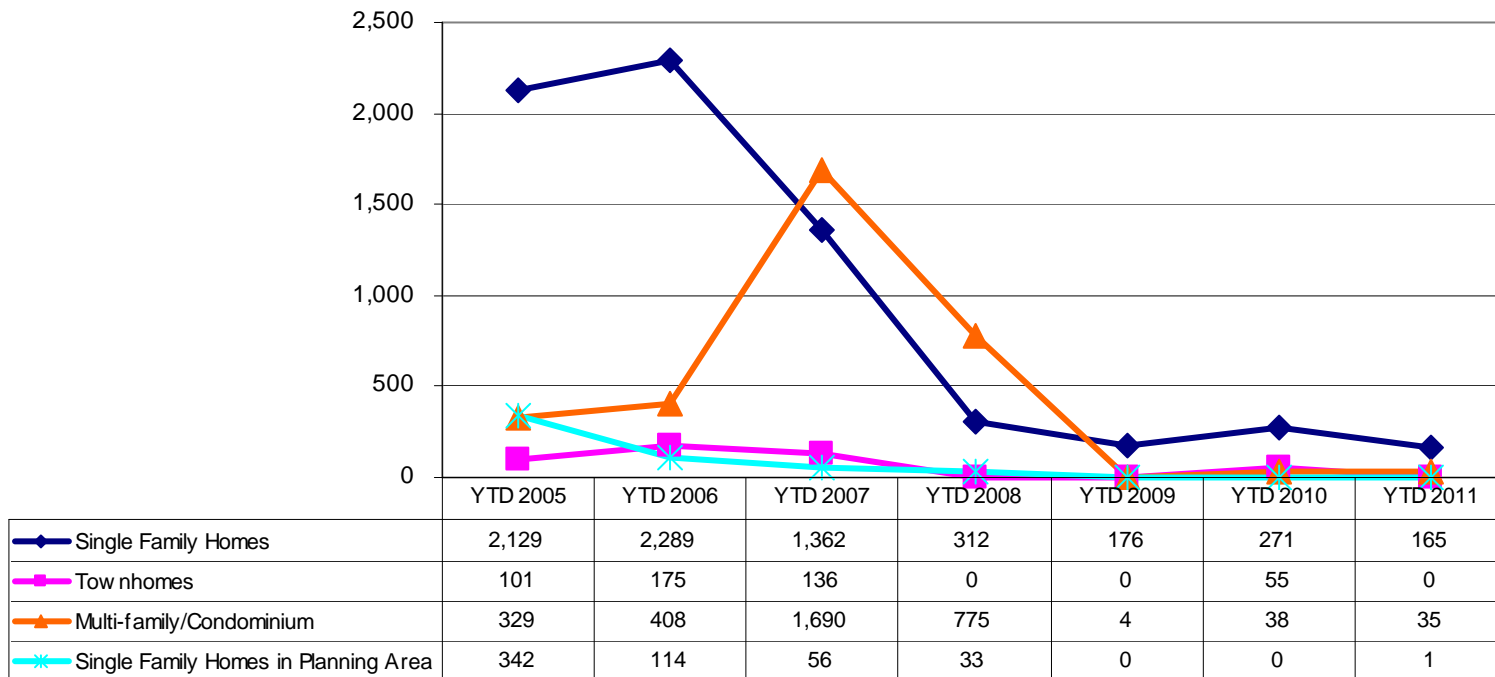
Success Rates for Code Compliance

| | Total Service Requests | Violations Found | Violations Abated | Success Rate |
|-------------|------------------------|------------------|-------------------|--------------|
| 2010 | 4,029 | 3,806 | 3,671 | 96.5% |
| 2009 | 4,241 | 4,124 | 4,009 | 97.2% |
| 2008 | 5,242 | 5,051 | 4,938 | 97.8% |
| 2007 | 4,337 | 4,174 | 4,019 | 96.3% |



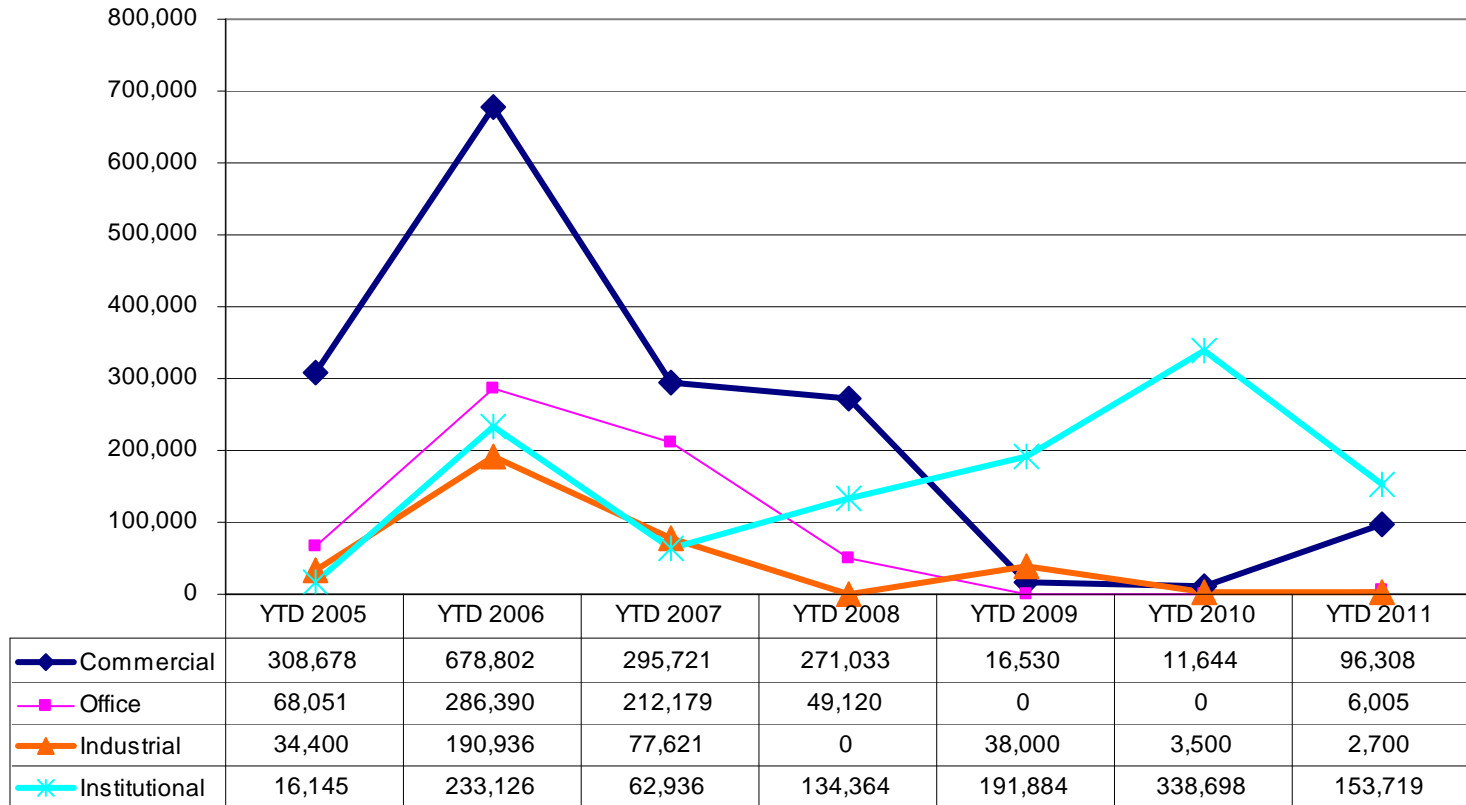
Comment: The number of new dwelling units being approved has leveled off during the past three years while existing inventory is being absorbed.

Dwelling Units by Type Approved by the Planning Commission or Development Services



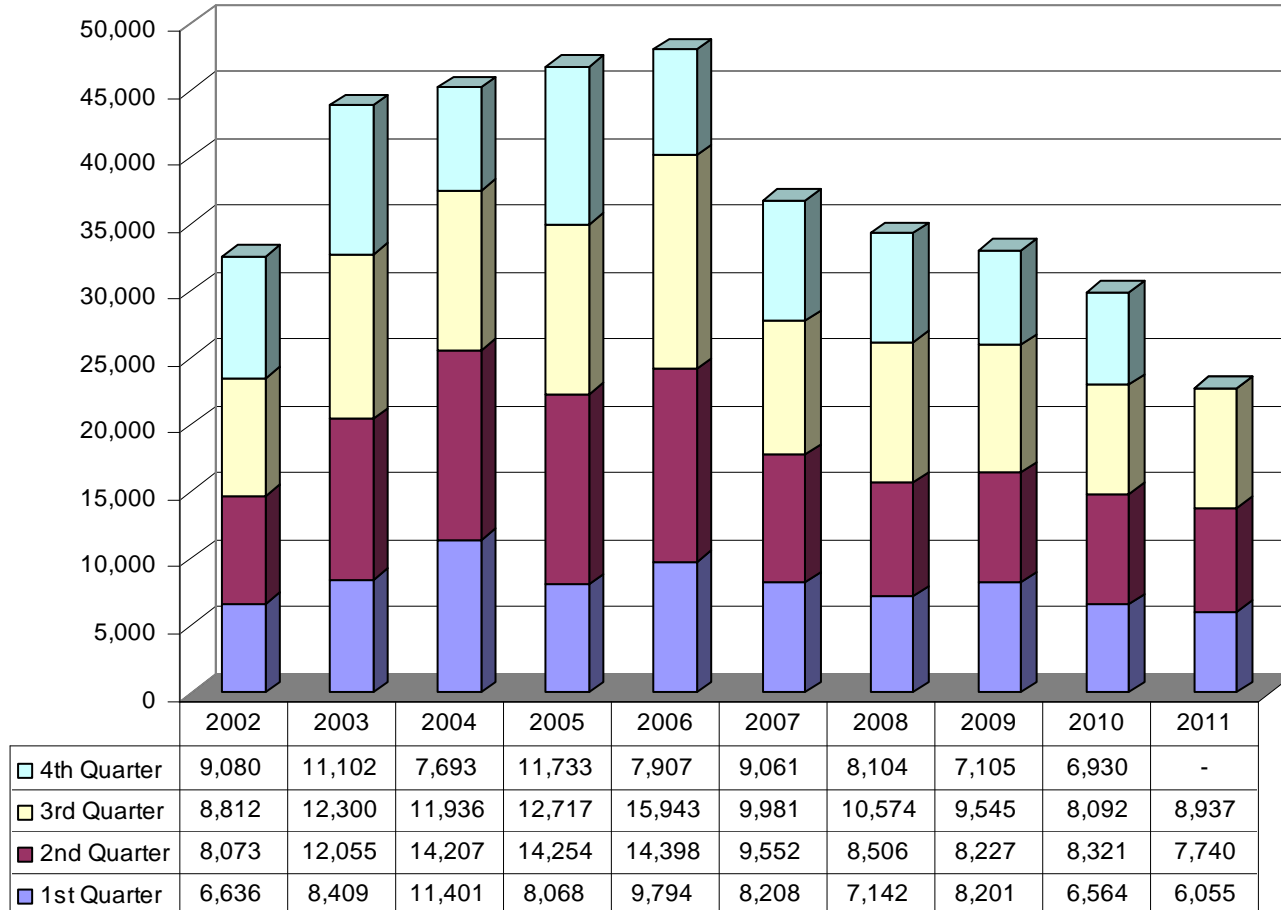
Comment: The amount of new non-residential space continues to be low as the market absorbs existing space.

Non Residential Square Footage by Type Approved by the Planning Commission or Development Services



Comment: The FAA forecasts that General Aviation Operations in the U.S. will likely see very modest growth of 1% annually from 2011 to 2030. Industry predictions indicate optimism for a rebound to begin in 2012.

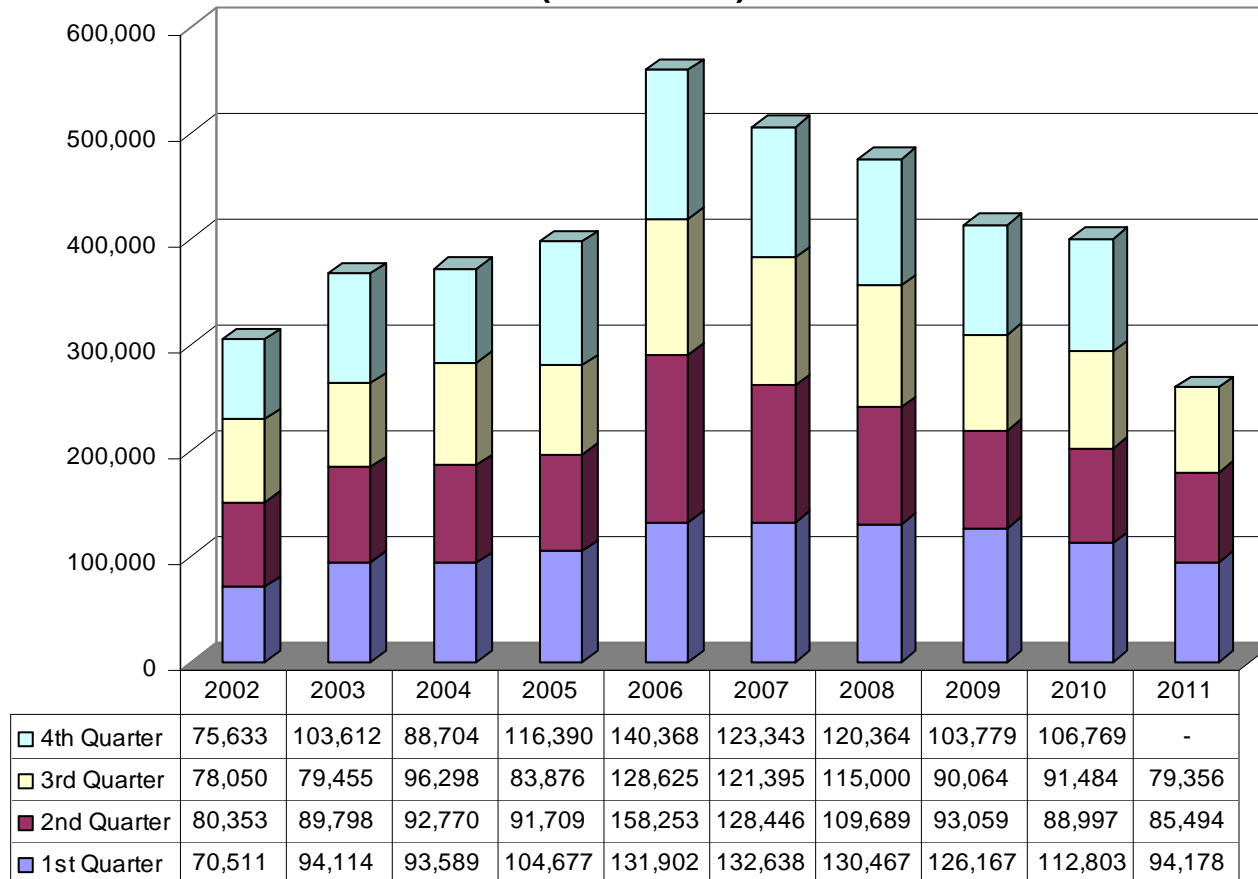
Airport Operations* (Number of Occurrences)



*A takeoff, landing, or control tower contact passing through Fayetteville airspace during tower operating hours.

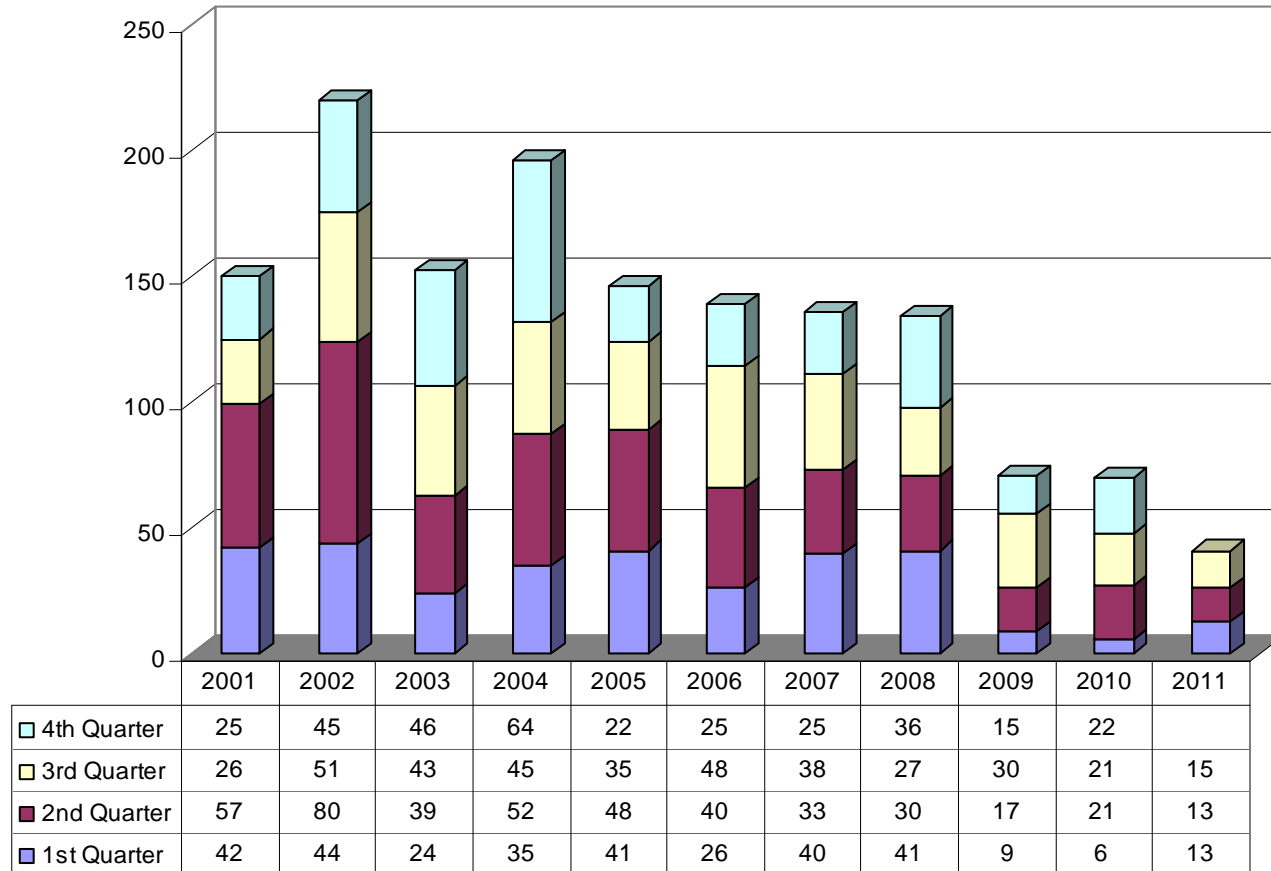
Comment: Aircraft fuel sales decline since 2006 is consistent with other U.S. aviation business activity due to U.S economic conditions. Rising fuel prices in 2011 hampered fuel sales.

Airport Fuel Sales (In Gallons)



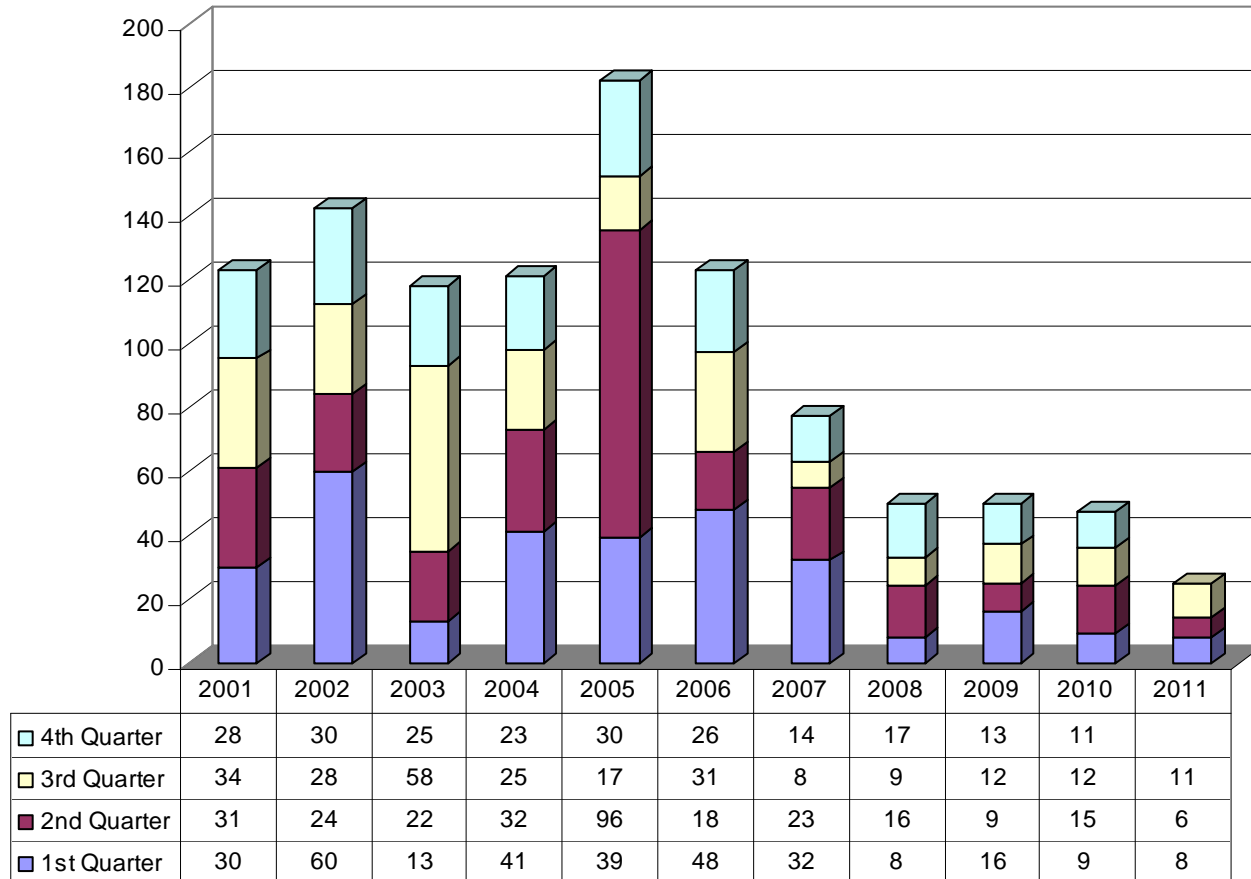
Comment: The third quarter is meeting anticipated numbers based on first and second quarter 2011 and the past two years.

Number of New Water Connections Made



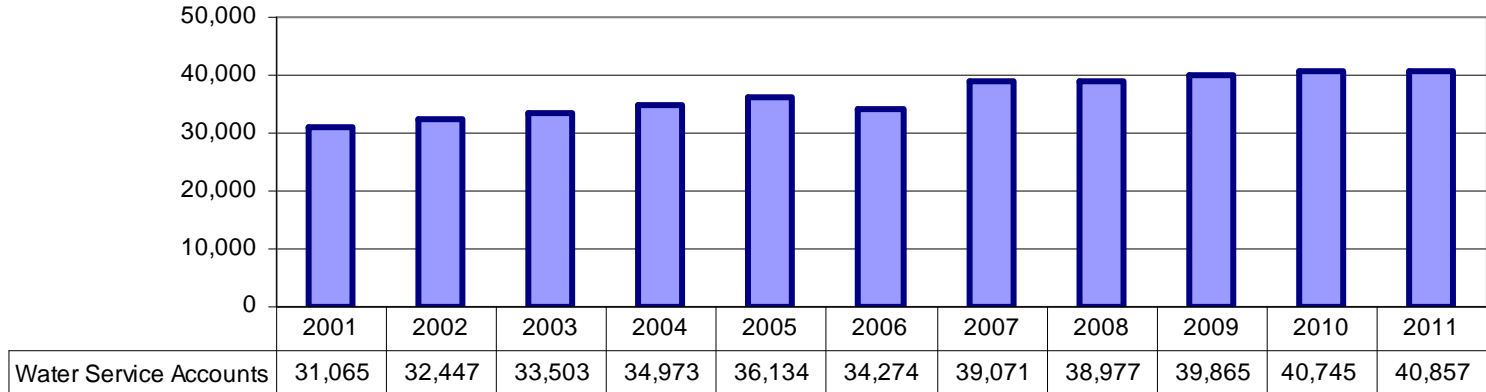
Comment: The third quarter tracked more in relation to the previous years. The sewer connection numbers for the year are anticipated lower than the last few years but the trend appears to be improving.

Number of New Sewer Connections Made

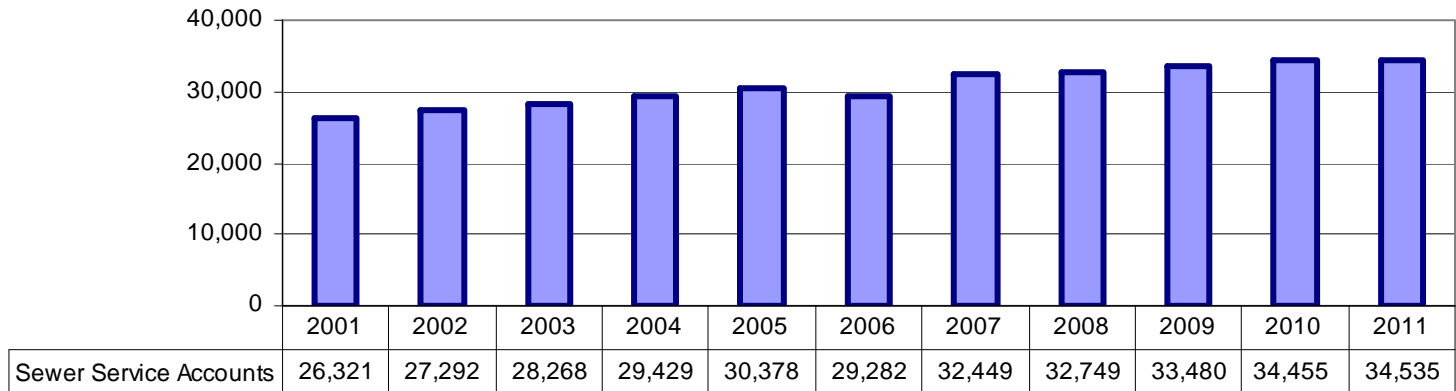


Comment: Service Accounts in 2011 have increased as anticipated and show growth in line with recent years.

Number of Water Service Accounts

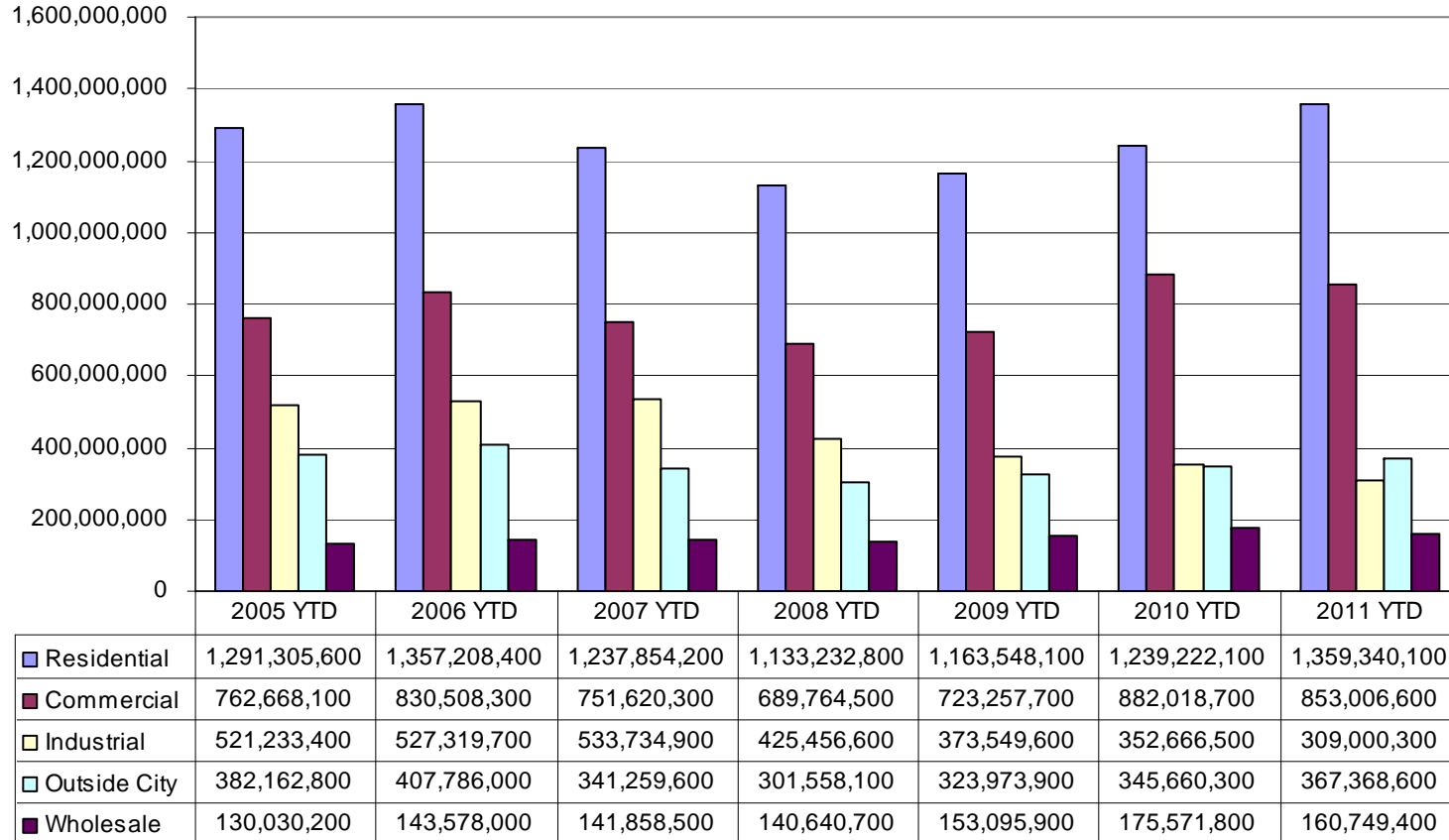


Number of Sewer Service Accounts



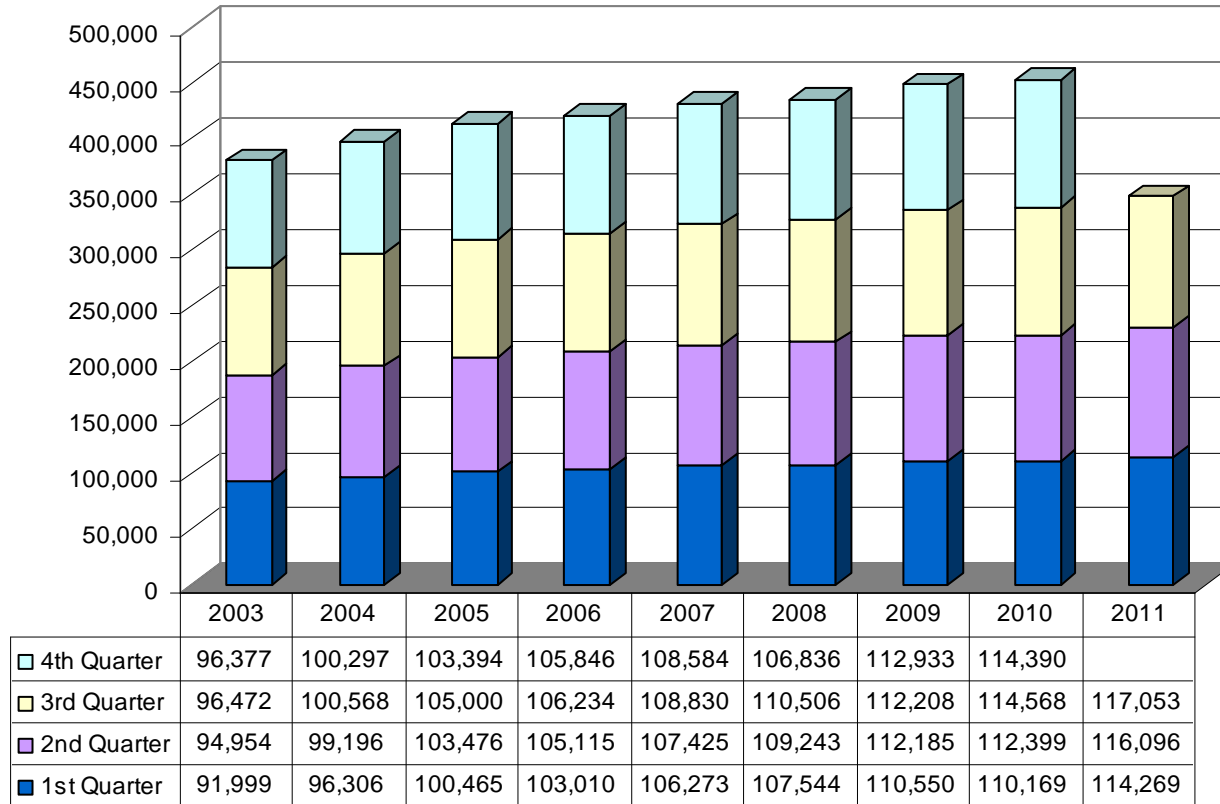
Comment: Increased water consumption for the third quarter is the result of the extremely high temperatures and dry weather during the current summer months compared to previous summer months.

Water Consumption by Customer Type (In Gallons)



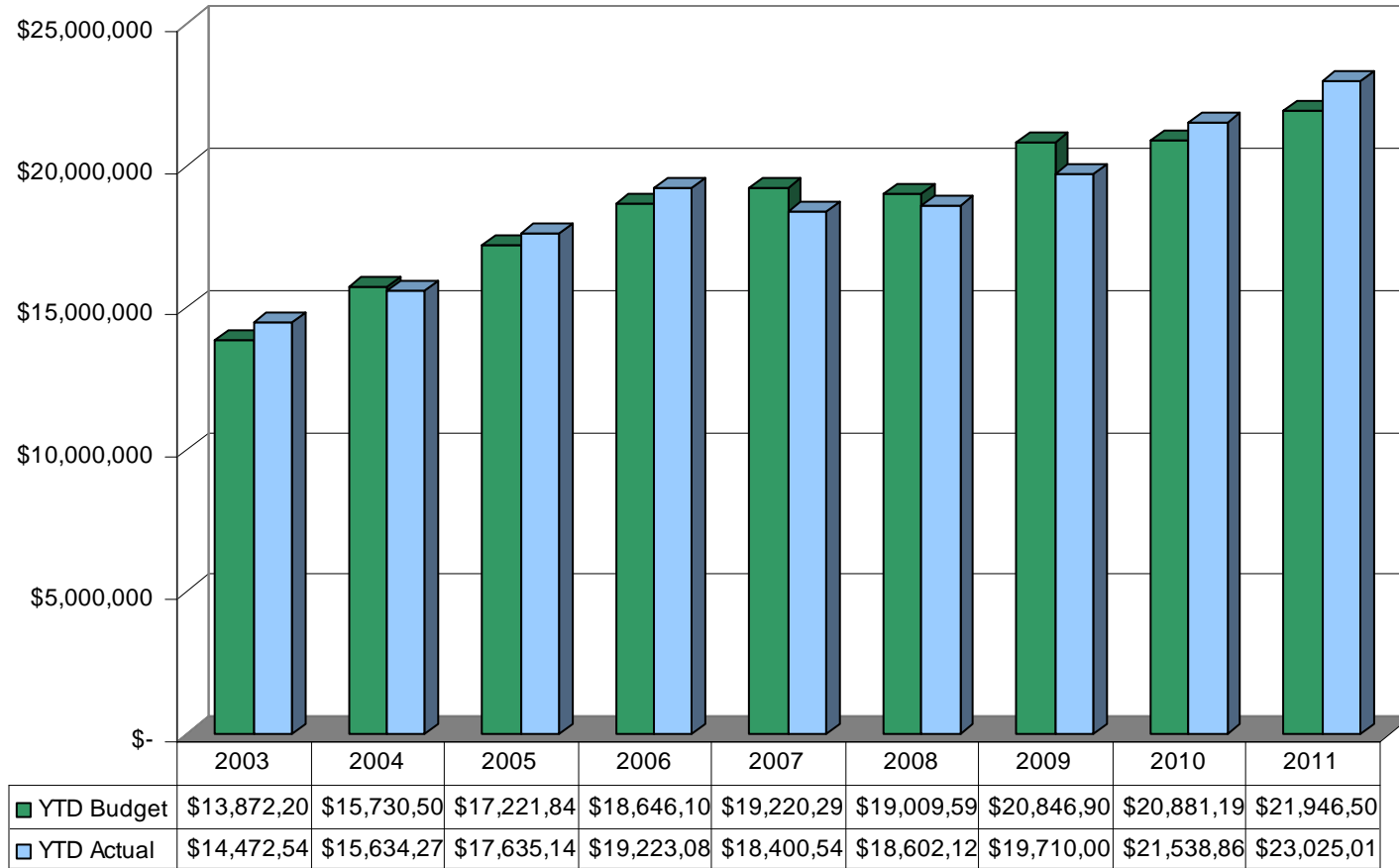
Comment: The third quarter of 2011 compared to the third quarter of 2010 indicates stagnate growth.

Number of Water & Sewer Utility Bills Processed



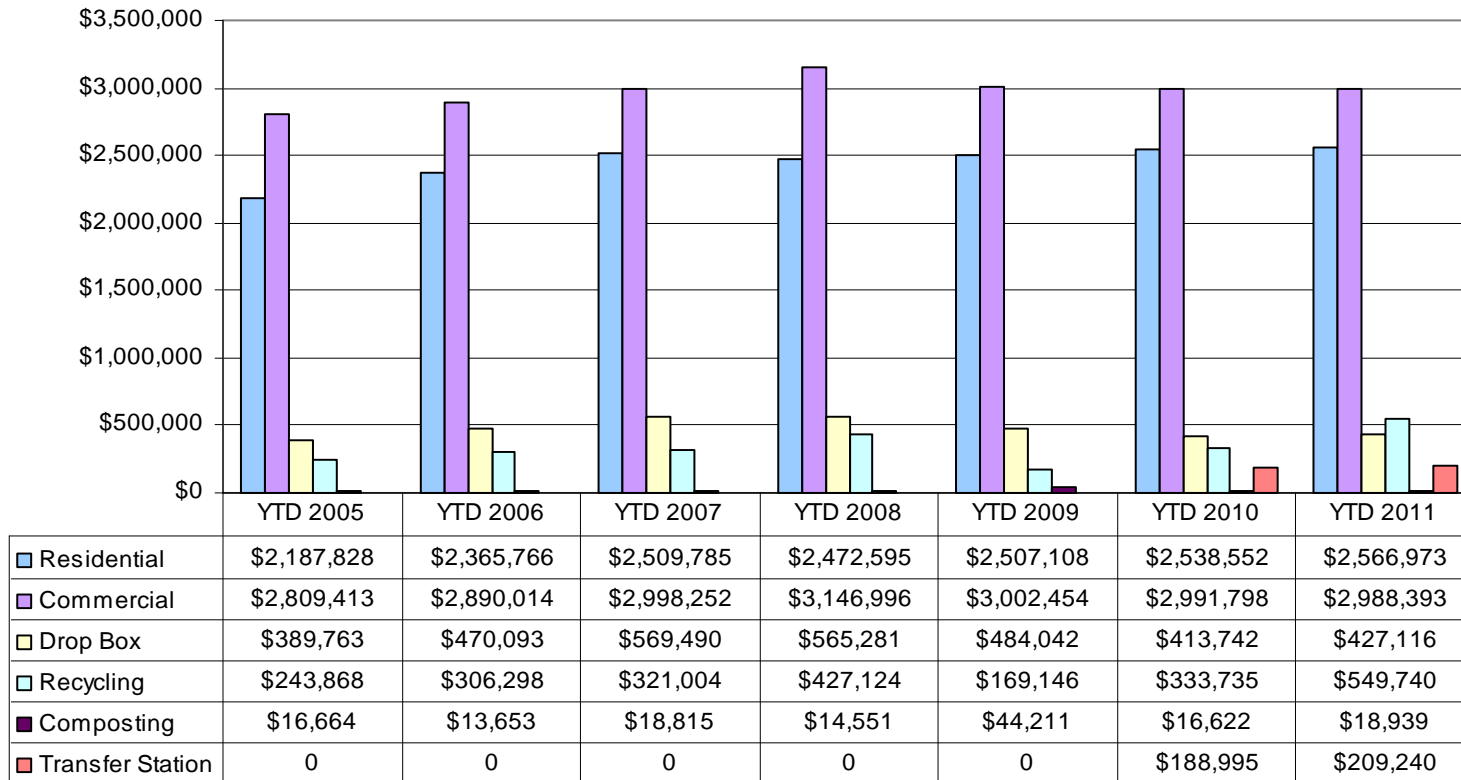
Comment: Revenue increases for the third quarter is the result of the extremely high temperatures and dry weather during the current summer months compared to previous summer months.

Water & Sewer Billed Revenue Collected Budget Compared to Actuals



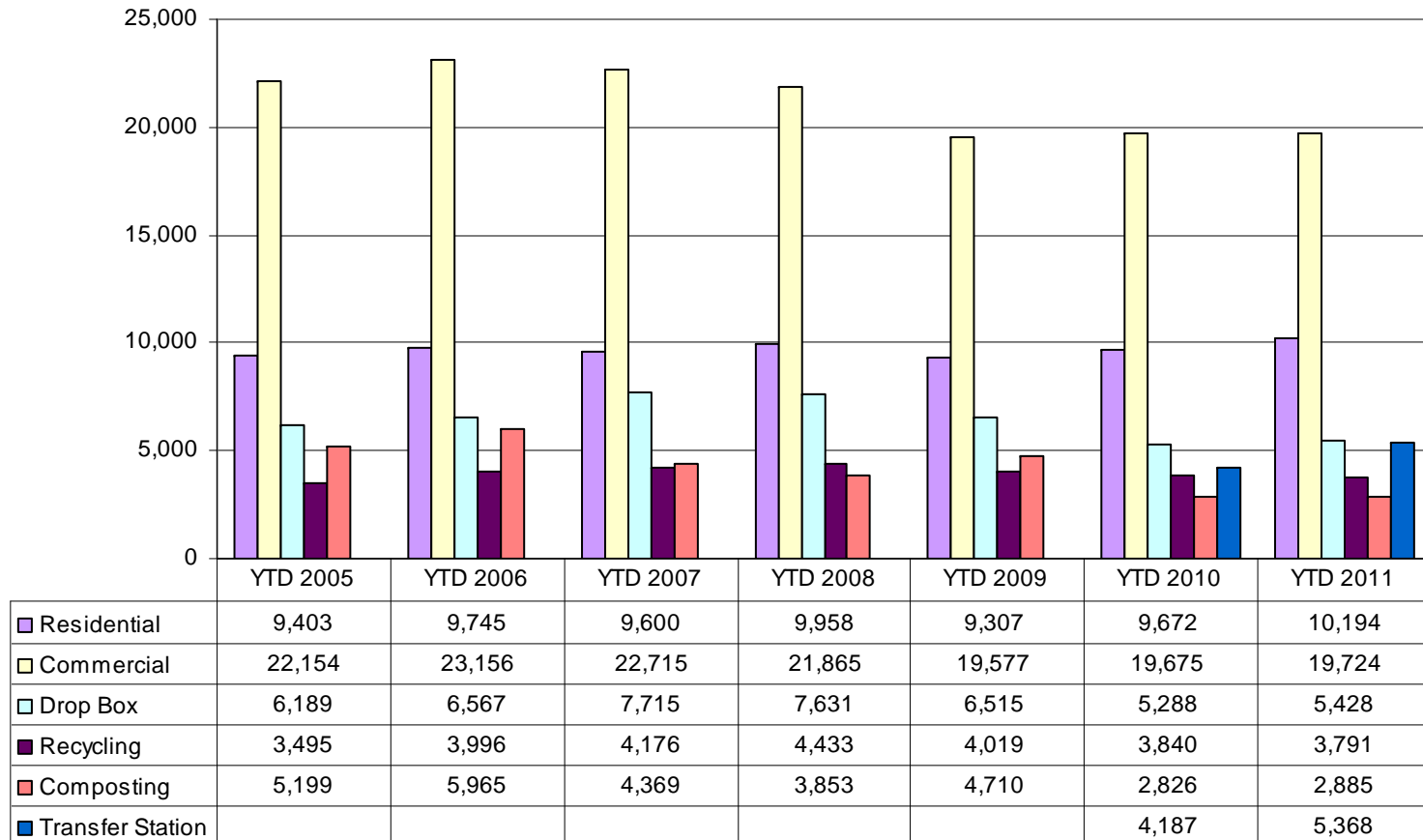
Comment: The City took over operation of the Transfer Station program in late October 2009. Recycling revenues are experiencing good commodity pricing and the Transfer Station is taking in more revenue than last year. Third quarter revenue needs to be verified with the September Income Statement.

Solid Waste Program Revenues (In Dollars)



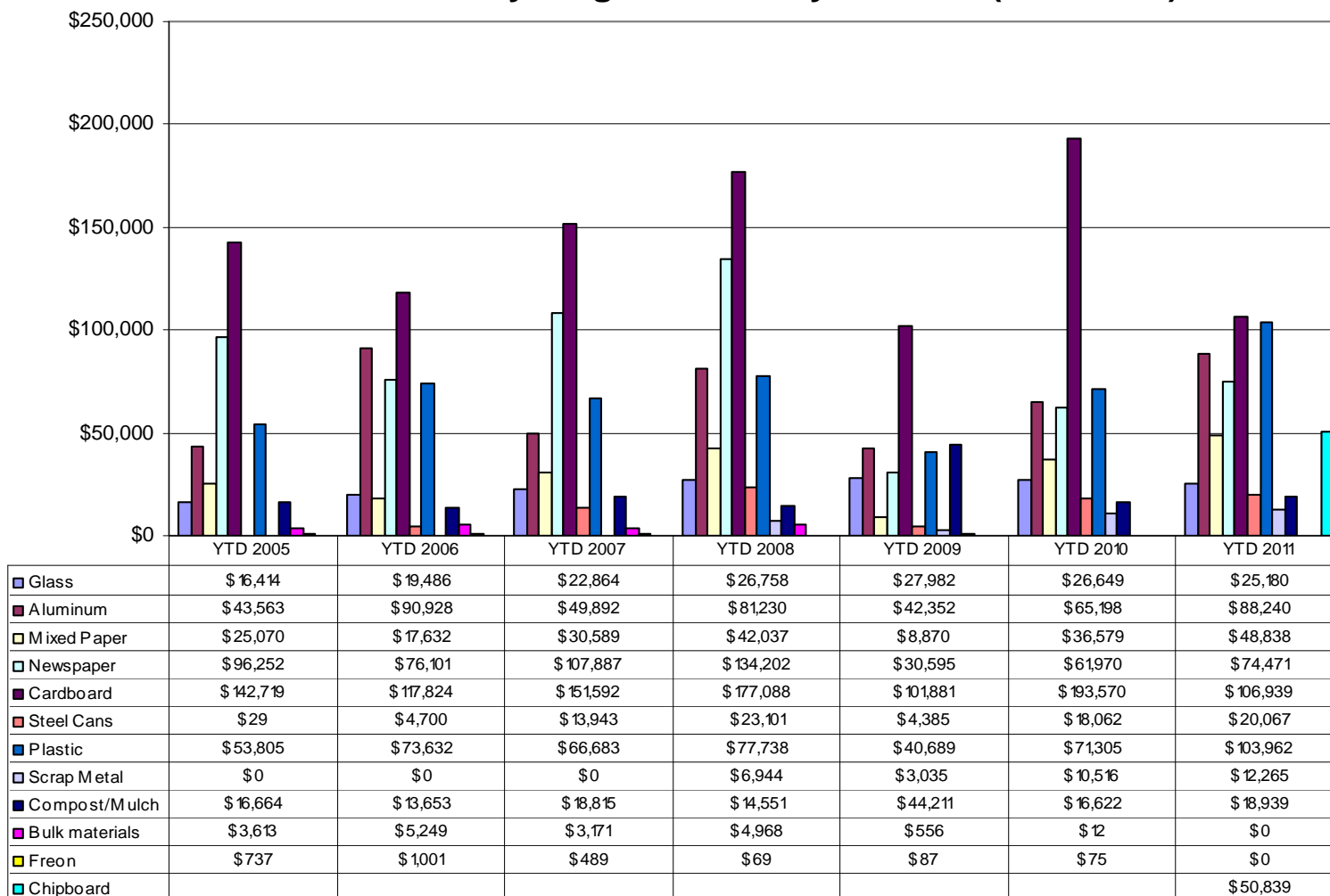
Comment: Recycling tonnage is reflective of recycling tons sold through the quarter. Waste volumes are rising slightly due to an improving economy.

Solid Waste Tonnage Collected by Program



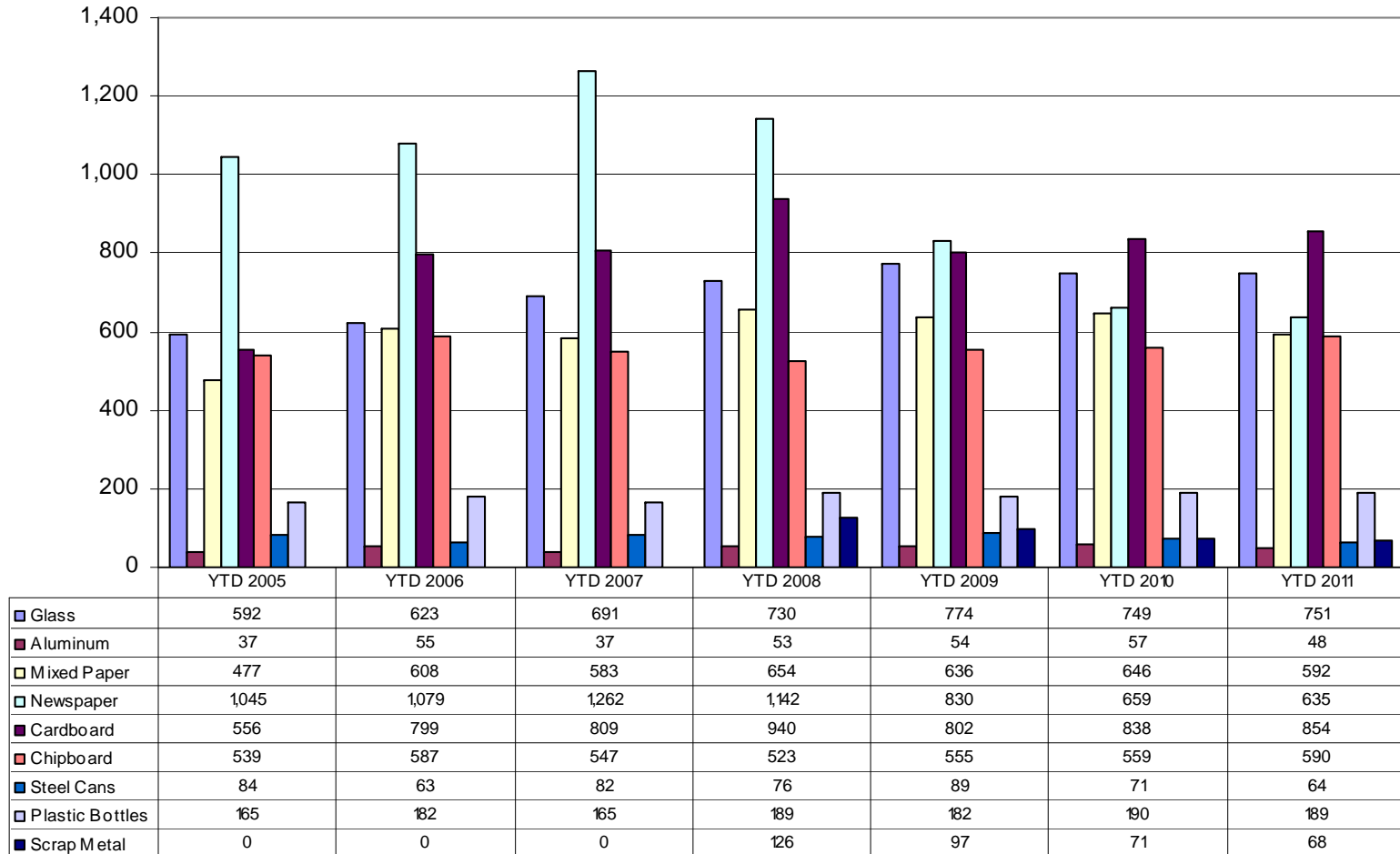
Comment: Commodity markets are performing very well this year. The last month has seen a slight dip in cardboard and aluminum pricing. Other fiber grades and plastics remain steady. Commodity prices for materials are volatile and change monthly, sometimes weekly. Third quarter revenue needs to be verified with the September Income Statement.

Solid Waste Recycling Revenue by Product (In Dollars)



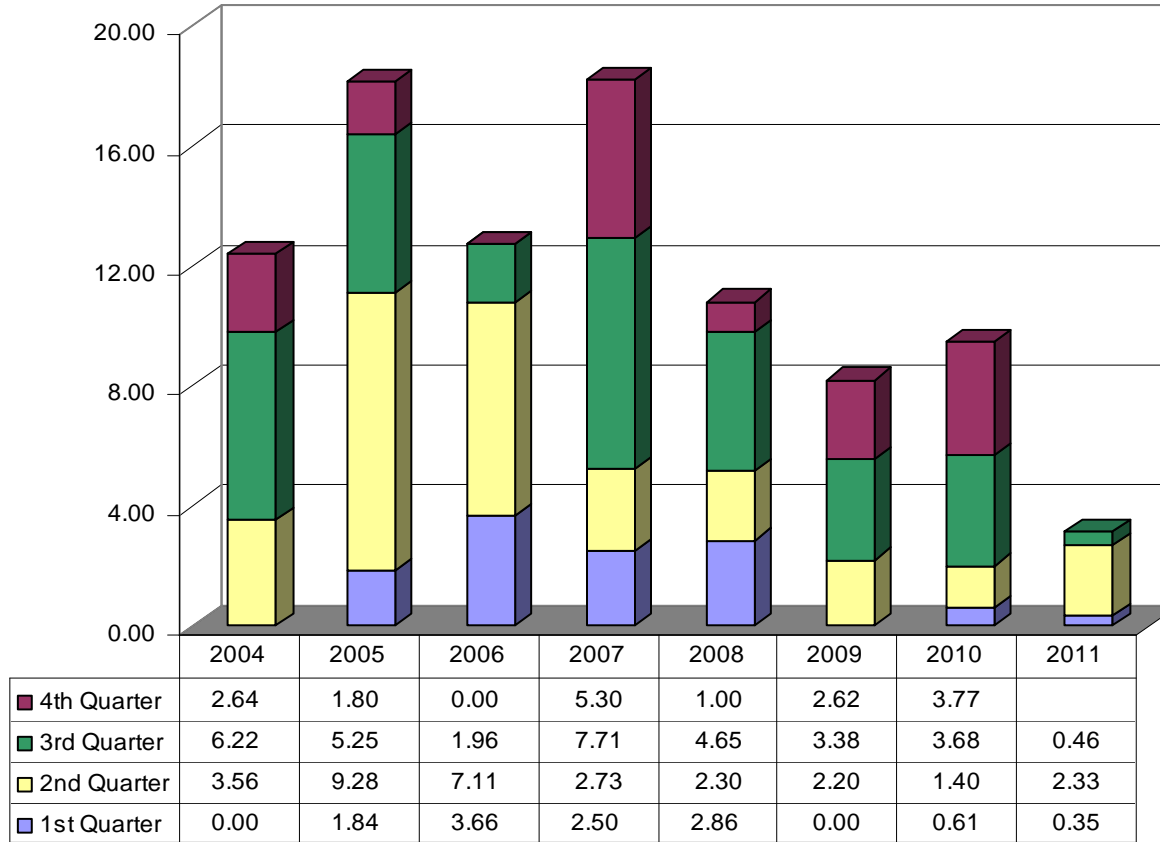
Comment: Tonnage sold seems to remain similar to last year. Fiber related commodities account for 70% of all materials collected.

Solid Waste Recycling Tonnage Sold by Product



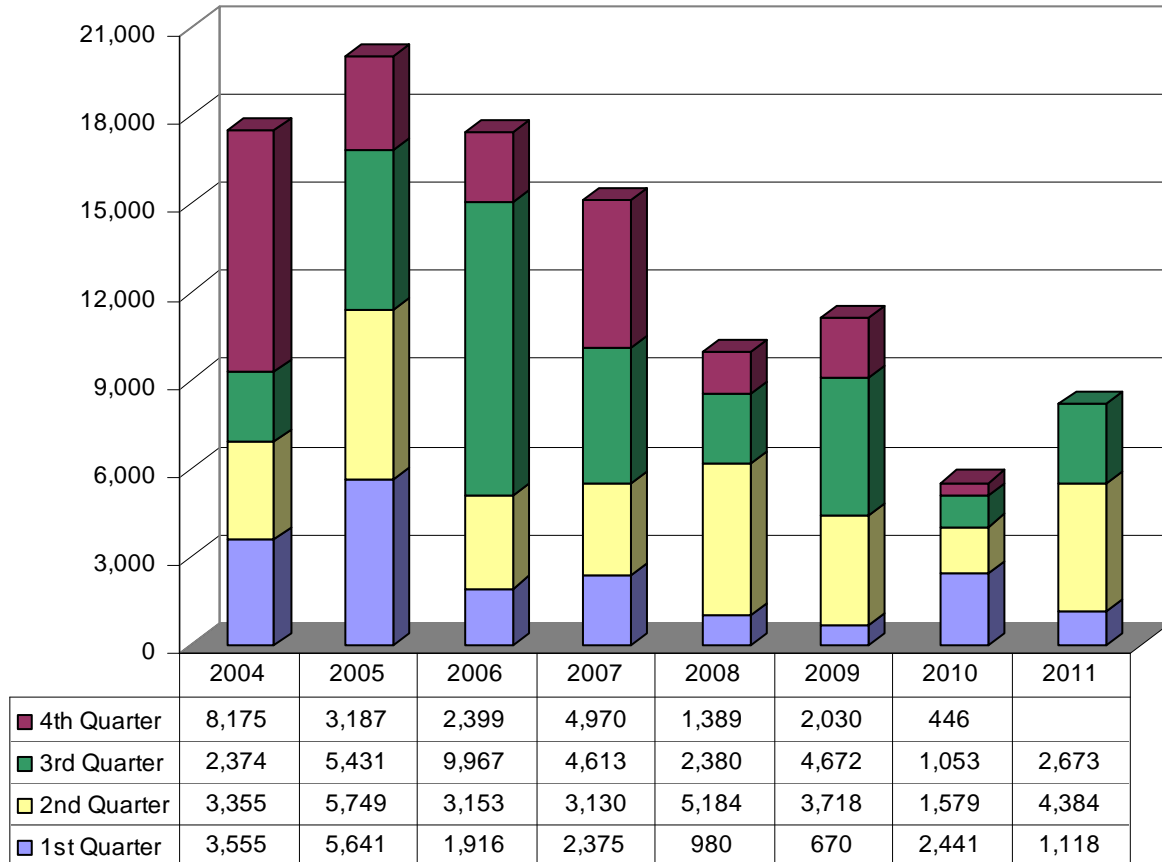
Comment: Overlays and spot repairs included: Center Street from Harmon Avenue to Gregg Avenue and Highland Avenue. Asphalt overlays were suspended for much of the third quarter to focus on drainage issues.

Asphalt Overlay - Miles Completed



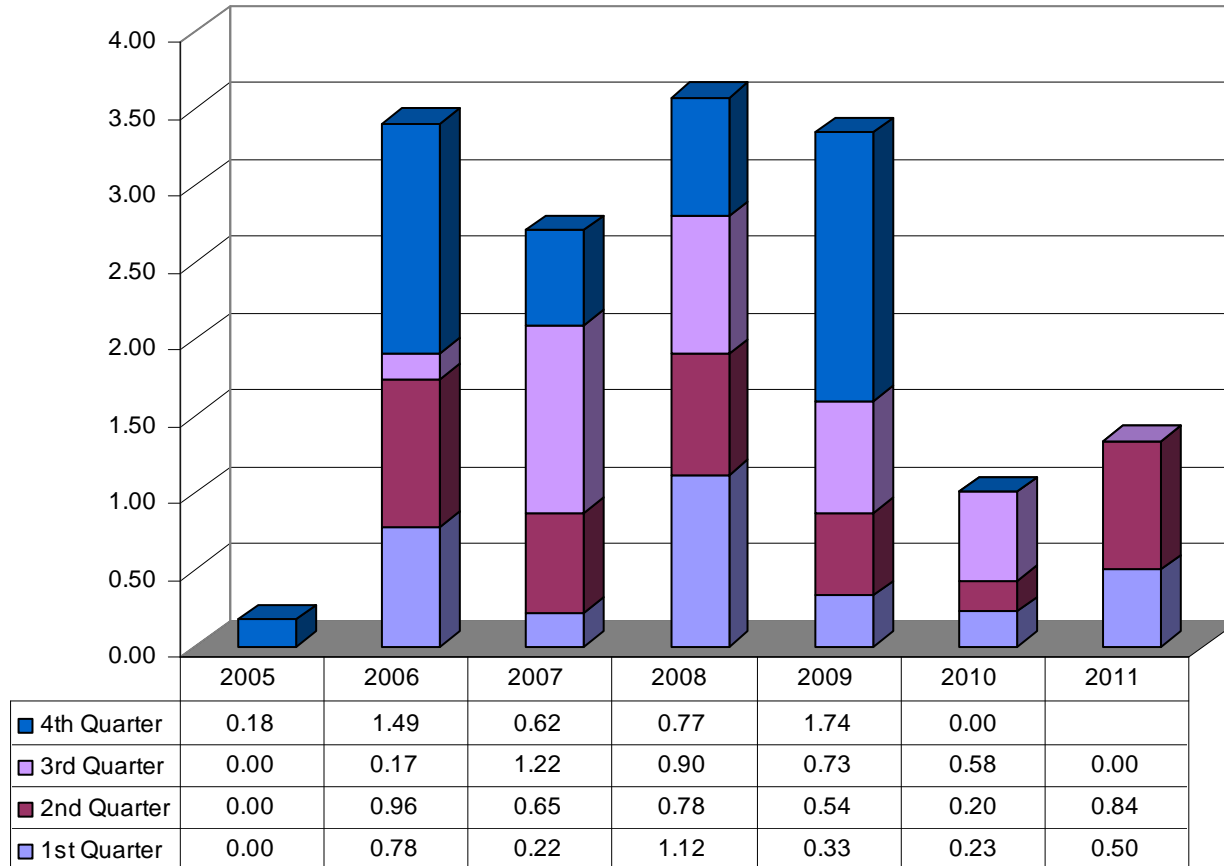
Comment: New sidewalk was constructed on Stanton Avenue and repairs were made to existing sidewalks on Country Way, Old Missouri Road, Township Street, Highland Avenue, Sang Avenue, Duncan Avenue, and Curtis Avenue.

Sidewalk Construction - Linear Feet Completed



Comment: The 0.5 mile Oak Trail Connection from Frisco Trail to the U of A campus is complete. The Trail Crew is now working on the 2.3 mile U of A Farm Trail. Construction on the U of A Farm Trail will continue through the end of 2011.

Trails Constructed or in Progress



Transportation Bond Street Improvements (LTD)

As of September 30, 2011

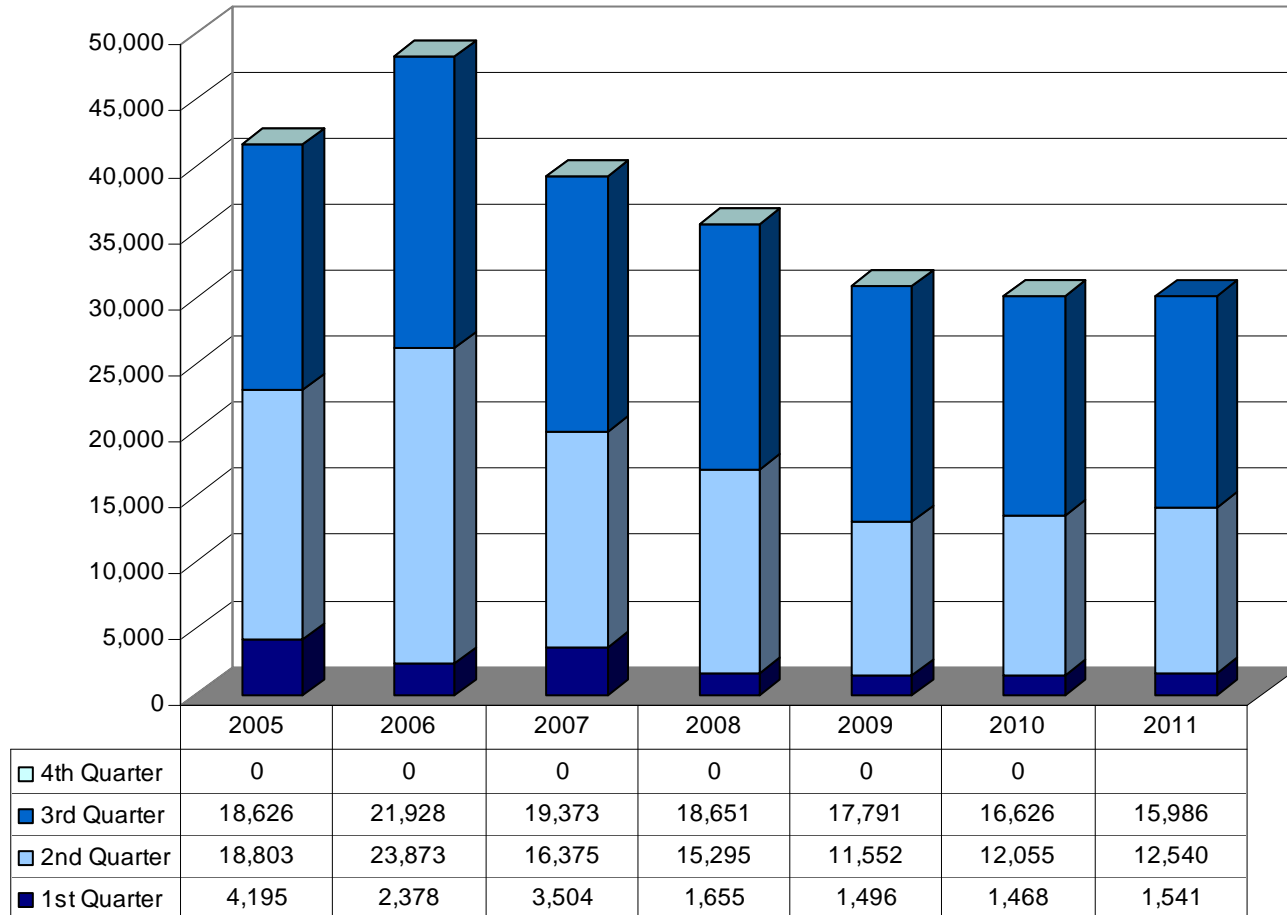
* Phase I: Oct 2006 - Sept 2009

* Phase II: Oct 2009 - Jan 2014

| Sub Projects | LTD BUDGET | | | | | | Expenses | Encumbs | Remaining Budget |
|--------------------------------------------|------------------|----------------------|-----------------------|----------------|-------------------|-------------------|------------------|-------------------|------------------|
| | Sales Tax | *Phase I Trans Bonds | *Phase II Trans Bonds | Water/Sewer | Total Budget | | | | |
| Active Projects: | | | | | | | | | |
| 02 - Maple & Lafayette Historic Bridges | - | 75,000 | - | - | 75,000 | 59,829 | - | 15,171 | |
| 04 - Cato Springs (S. School to Razorback) | 3,022,679 | 1,436,392 | 907,742 | 350,000 | 5,716,813 | 1,408,446 | 3,728,827 | 579,540 | |
| 05 - Crossover (Mission to City Limits) | - | 5,035,000 | 2,665,000 | - | 7,700,000 | 5,001,621 | - | 2,698,379 | |
| 06 - Fifteenth St (Happy Hollow-S College) | - | 19,386 | 2,195,613 | - | 2,214,999 | 19,386 | - | 2,195,613 | |
| 07 - Garland (North to Melmar) | - | 20,001 | 1,500,000 | - | 1,520,001 | 14,987 | - | 1,505,014 | |
| 08 - Garland (North to Melmar) W/S Rels | 160,000 | - | - | - | 160,000 | 44,429 | - | 115,571 | |
| 09 - Garland (Shiloh to Howard Nickell) | 7,803 | 250,000 | - | - | 257,803 | 146,386 | 88,749 | 22,668 | |
| 10 - Huntsville (Happy Hollow-Stonebridge) | 200,000 | 1,040,000 | 1,745,000 | - | 2,985,000 | 1,063,508 | - | 1,921,492 | |
| 11 - Huntsville Water/Sewer Relocations | - | - | - | 188,000 | 188,000 | 4,135 | - | 183,865 | |
| 12 - Mount Comfort (Rupple/Alpine) | 283,424 | 10,363,000 | - | - | 10,646,424 | 10,087,741 | 176,157 | 382,526 | |
| 13 - Fayetteville Expressway Econ Corridor | 1,031,562 | 881,115 | 618,884 | - | 2,531,562 | 917,252 | 377,986 | 1,236,323 | |
| 14 - Rupple Road (MLK to Persimmon) | - | 50,001 | - | - | 50,001 | 3,444 | - | 46,557 | |
| 17 - Right of Way Acquisition/Cost Sharing | - | 212,100 | - | - | 212,100 | 212,100 | - | - | |
| 18 - Miscellaneous | - | 71,485 | 1,135 | - | 72,620 | 56,017 | - | 16,603 | |
| 19 - Van Asche (Garland to Gregg) | - | 102,468 | - | - | 102,468 | 19,793 | 28,032 | 54,643 | |
| Complete Projects: | | | | | | | | | |
| 01 - Wilson Park/Washington-Willow Area | - | 910,186 | - | - | 910,186 | 910,186 | - | (0) | |
| 15 - Zion Road (College to Vantage) | - | 2,274,560 | - | - | 2,274,560 | 2,274,560 | - | (0) | |
| 16 - College Avenue (Rock to Maple) | - | 1,840,897 | - | - | 1,840,897 | 1,840,897 | - | - | |
| Grand Total | 4,705,468 | 24,581,590 | 9,633,374 | 538,000 | 39,458,433 | 24,084,716 | 4,399,752 | 10,973,965 | |

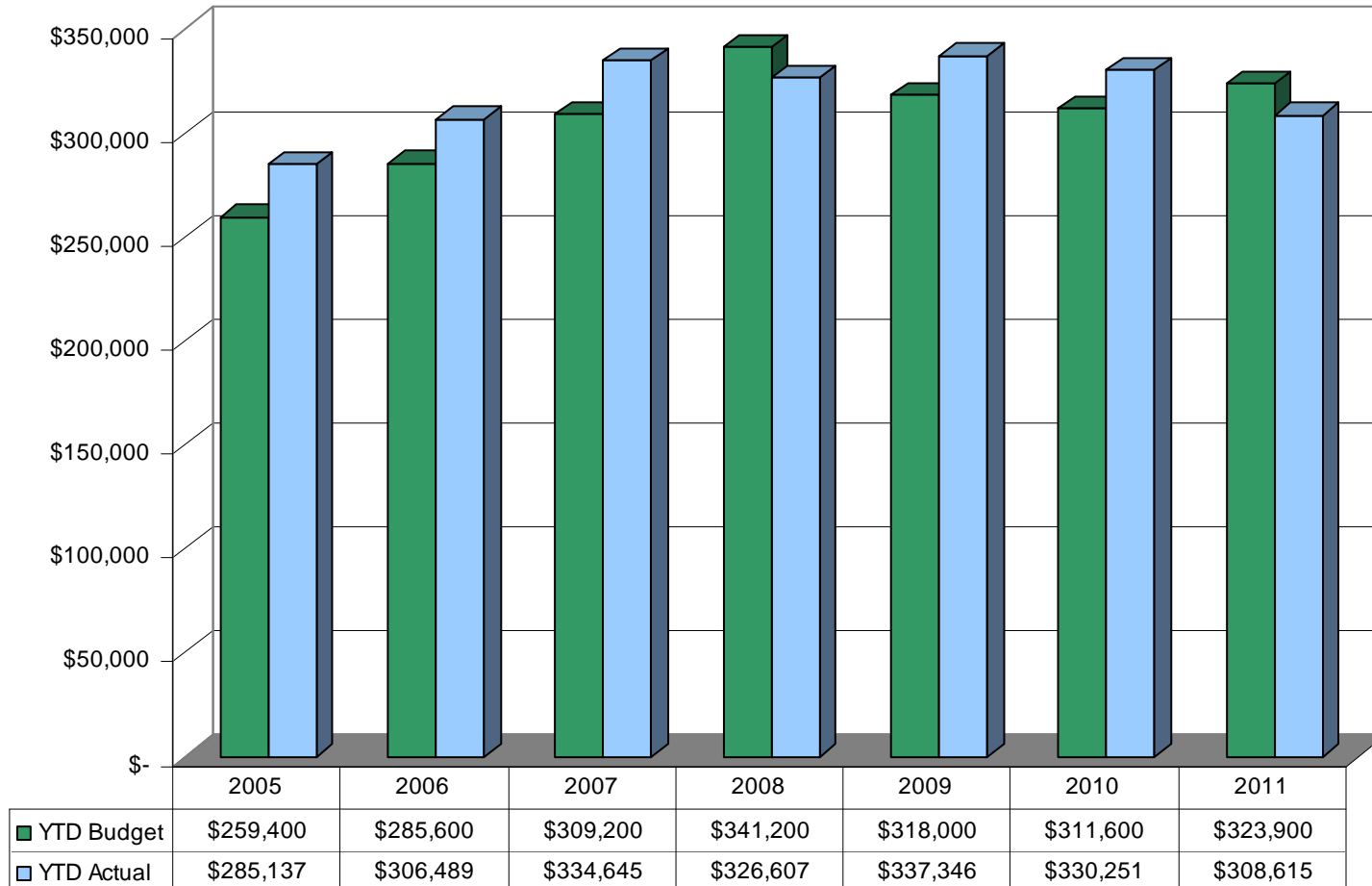
Comment: There are less participants in fall programs this year

Number of Parks & Recreation Program Participants



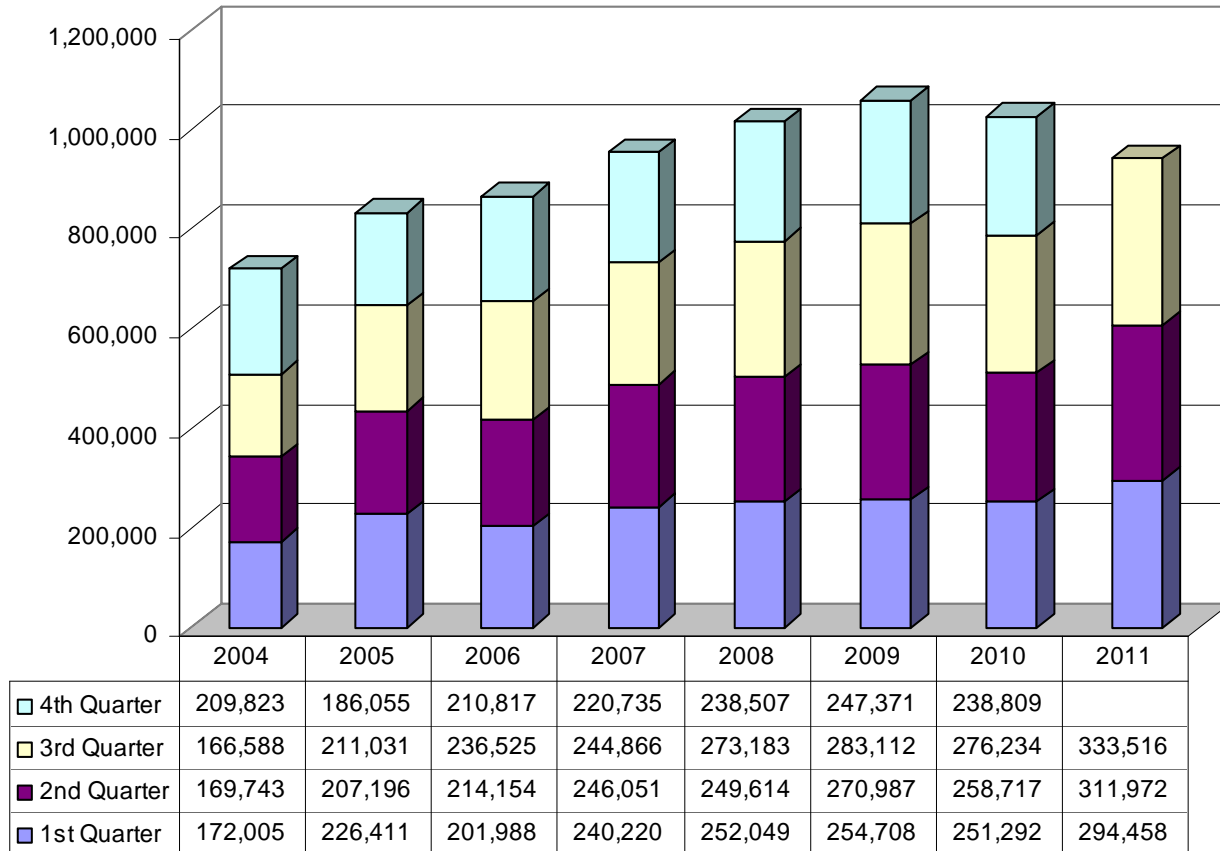
Comment: There were less registrations for the adult softball league and for the youth and women's soccer leagues.

Parks & Recreation Program Revenue Year-to-Date



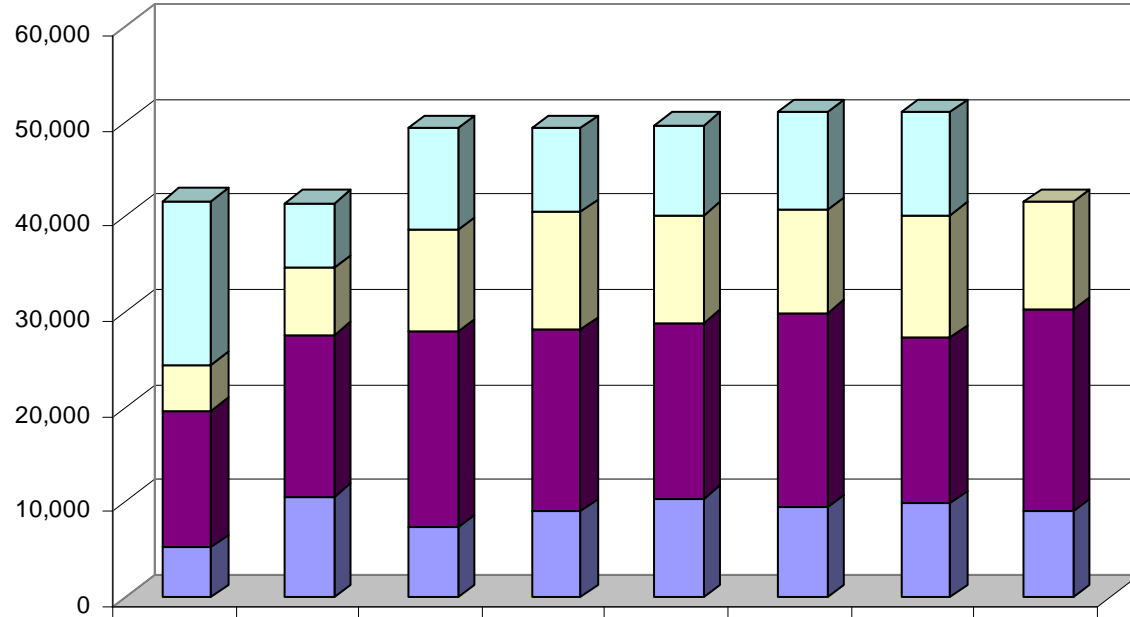
Comment: Check outs are up over 19% for the year. July 2011 check outs were 121,626, the highest ever for a single month usage, breaking the previous record set in June of this year. Check outs are currently tracking to hit an all-time annual high.

Library Check Outs



Comment: Attendance trended up posting a 3.3% gain over the same period last year.

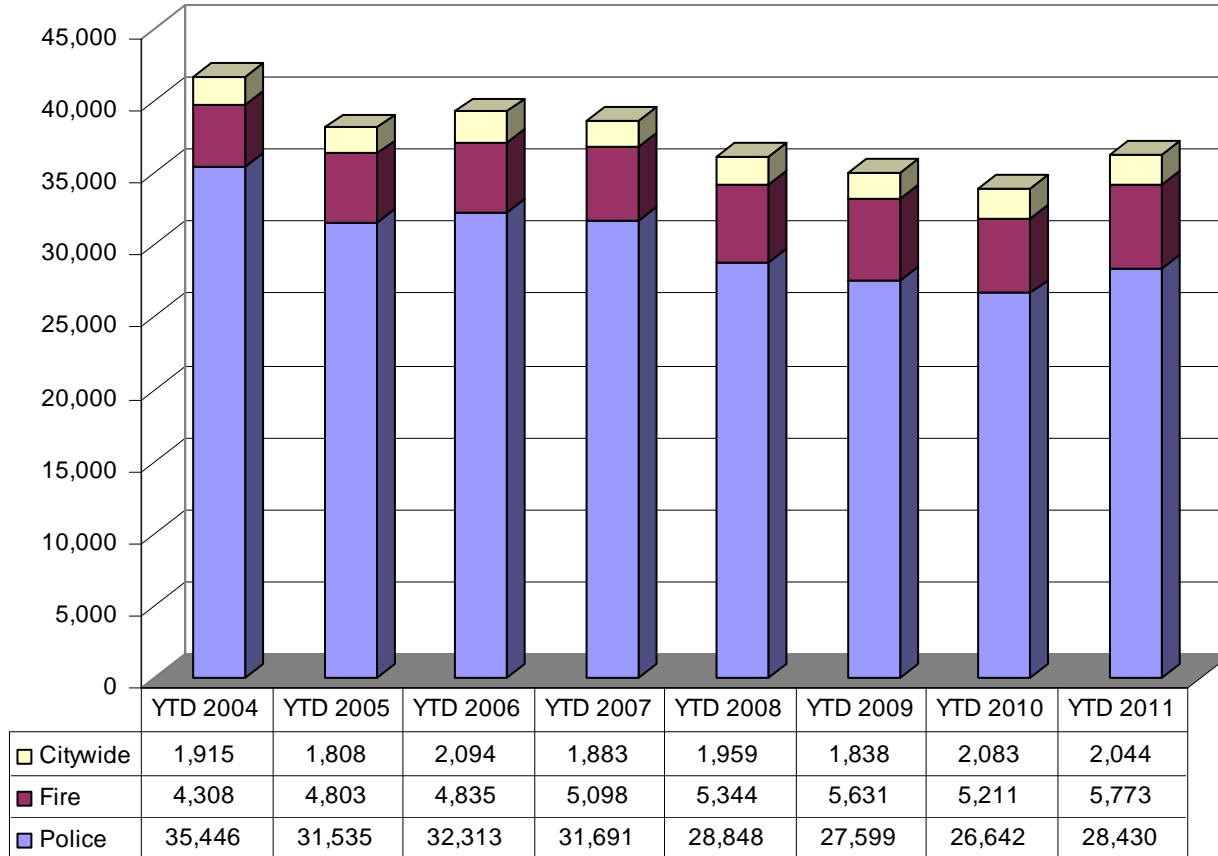
Library Program Attendees



| | | | | | | | | |
|-------------|--------|--------|--------|--------|--------|--------|--------|--------|
| 4th Quarter | 17,216 | 6,727 | 10,684 | 8,766 | 9,474 | 10,235 | 10,755 | |
| 3rd Quarter | 4,840 | 7,075 | 10,602 | 12,393 | 11,323 | 10,873 | 12,892 | 11,327 |
| 2nd Quarter | 14,290 | 17,008 | 20,633 | 19,084 | 18,411 | 20,476 | 17,460 | 21,169 |
| 1st Quarter | 5,312 | 10,586 | 7,326 | 9,060 | 10,418 | 9,406 | 9,837 | 9,027 |

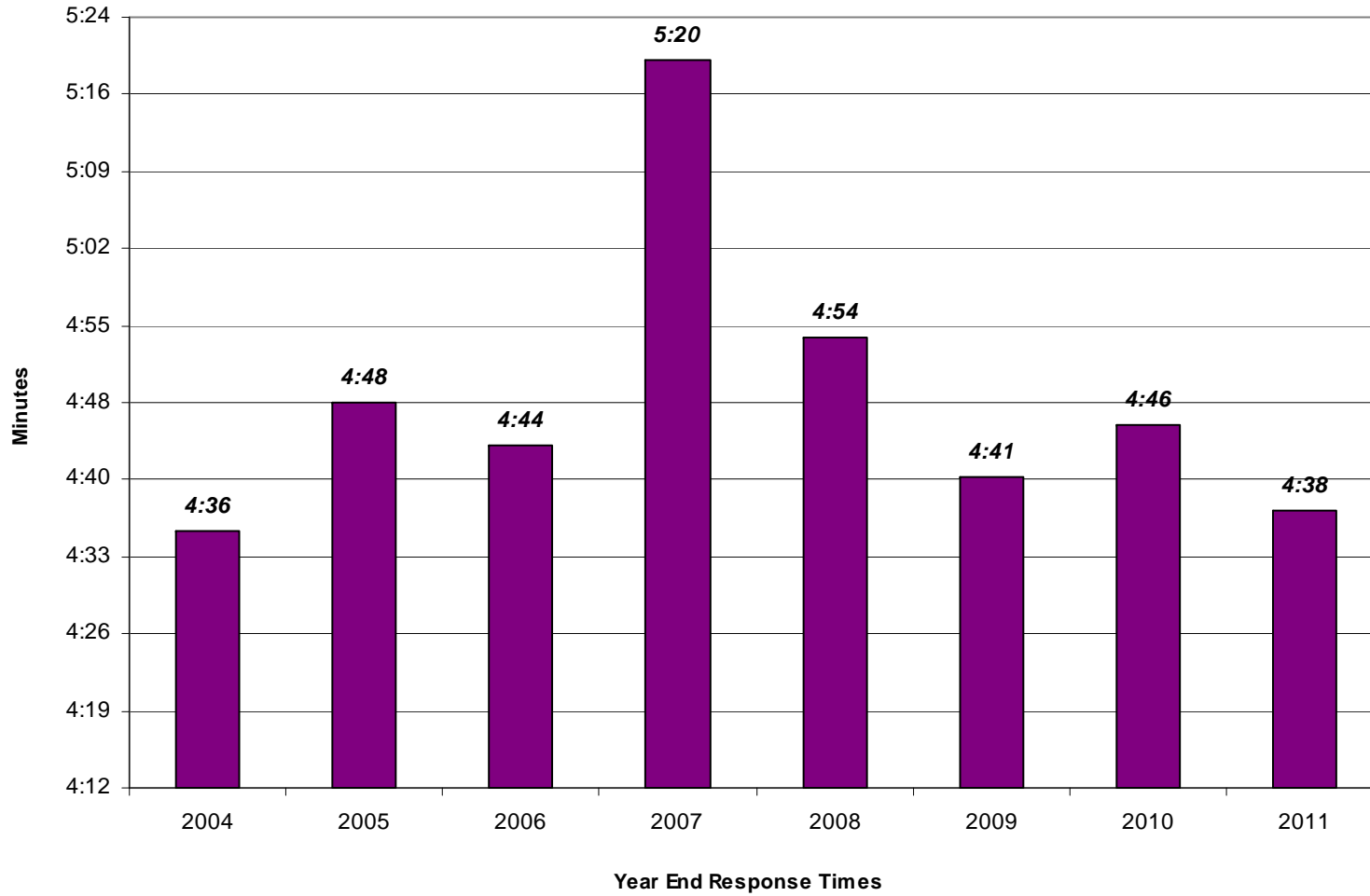
Comment: Police calls have increased over the 2010 third quarter by 9%. Staff received more than 2,800 calls over Priority 1 and 2 in 2010. Priority 3 calls decreased during this same time.

Central Dispatch Calls for Service



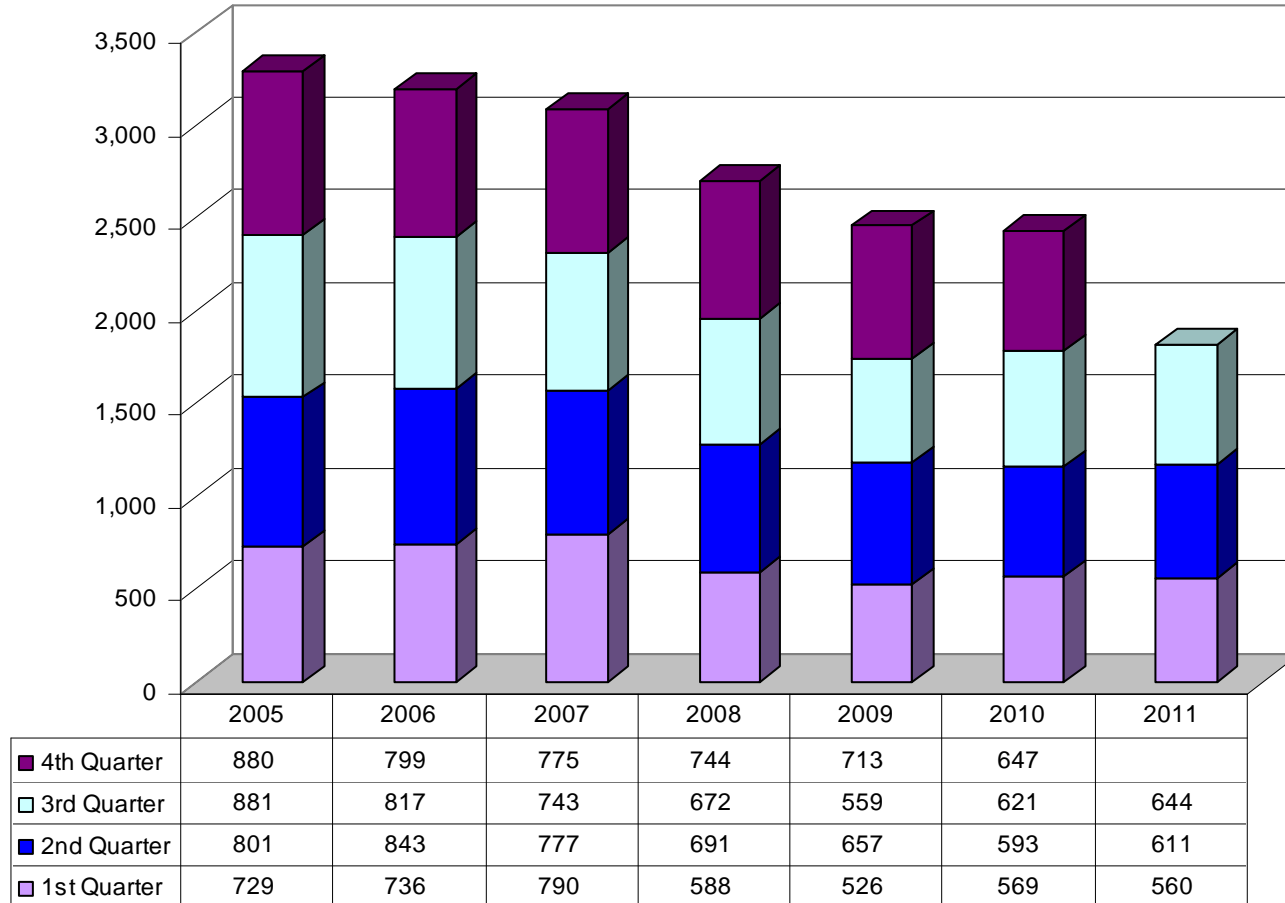
Comment: Response time to priority one calls decreased eight second compared to 2010.

Police Emergency Response



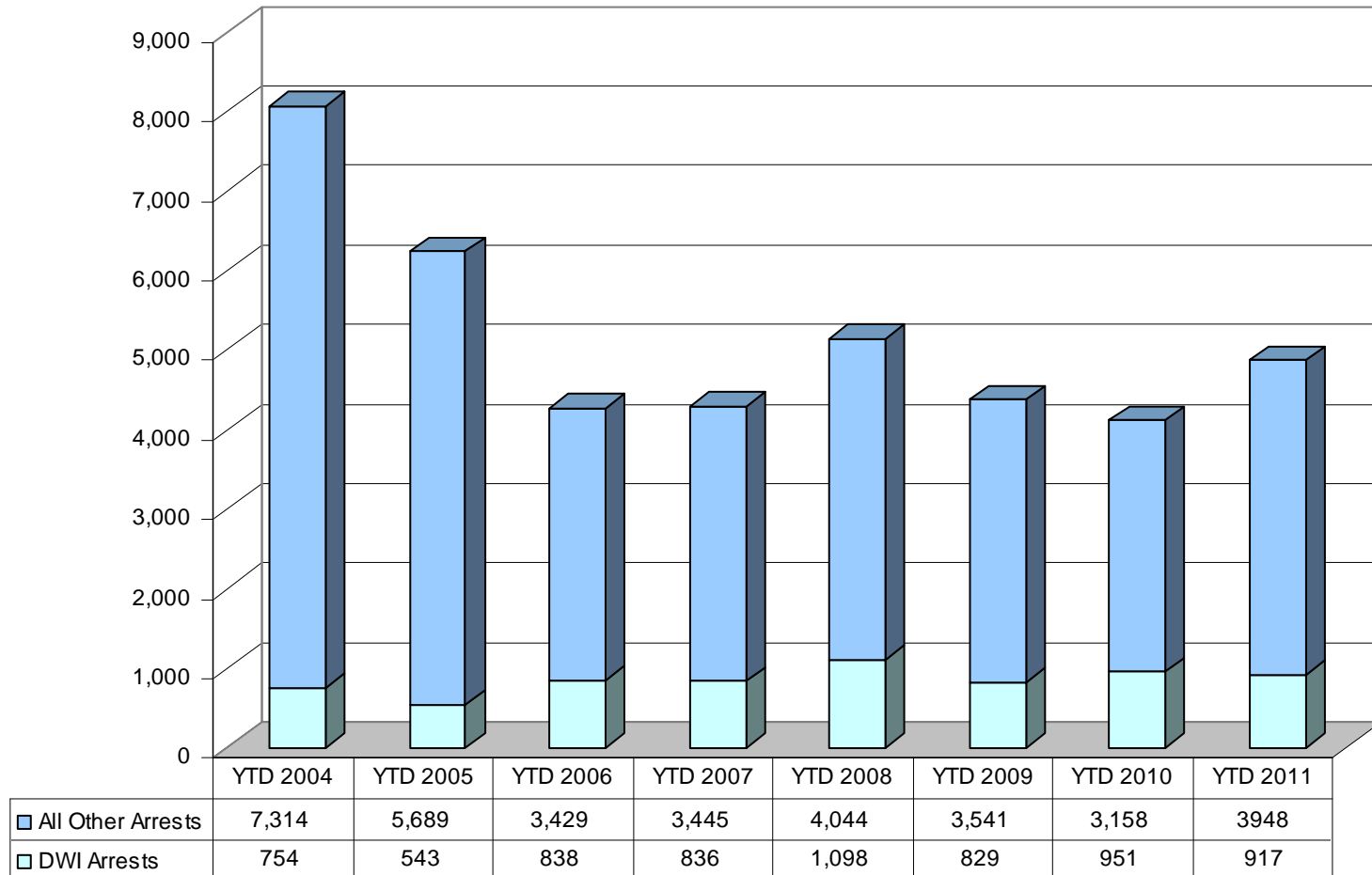
Comment: Accidents were up by 1.8% year to date in 2011. There are many factors affecting these numbers, such as but not limited to, traffic enforcement, weather, amount of traffic, and road construction.

Traffic Accidents Worked by Police



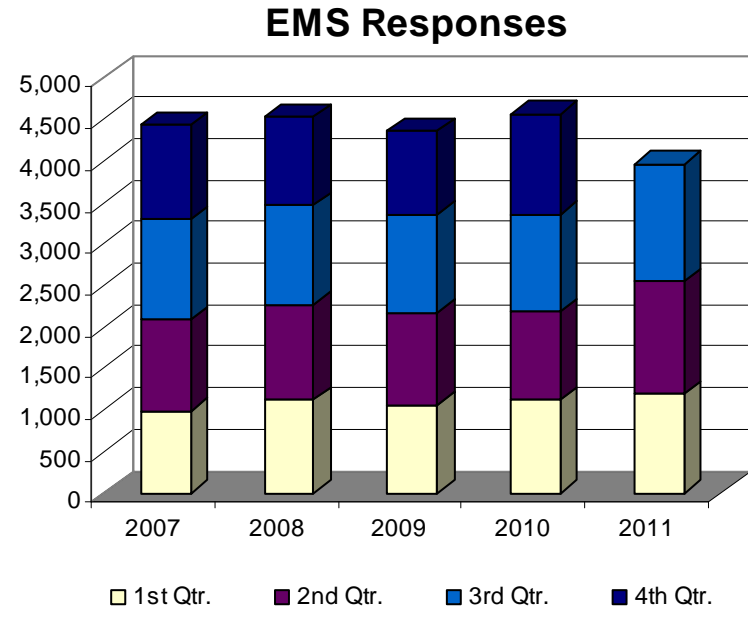
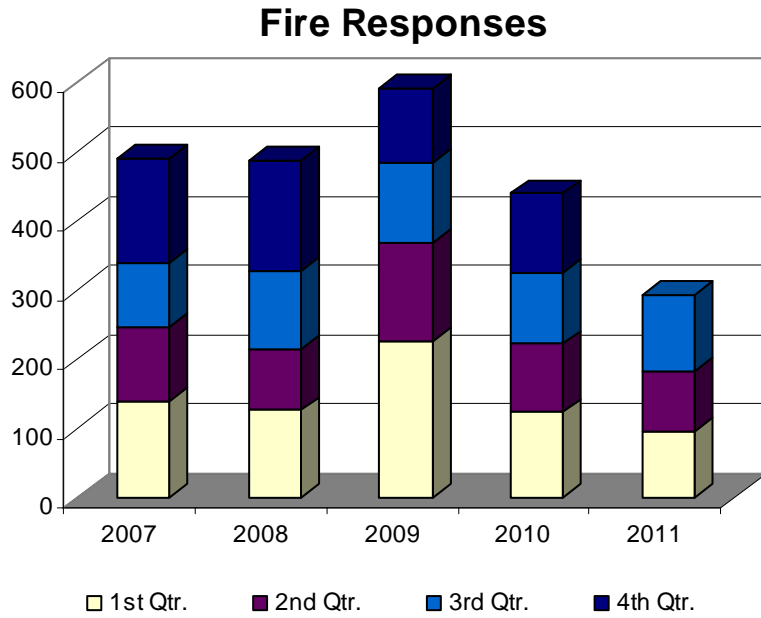
Comment: DWI arrests are down 3.58% year to date. During the first three quarters, staff utilized grants to provide officer over-time to work DWI. This resulted in more contacts with the public and more public awareness to prevent drunk driving.

Police Arrests



Comment: The number of Fire responses fell by 32. However, EMS responses are 18% above last year at this time.

Fire Department Annual Calls for Service



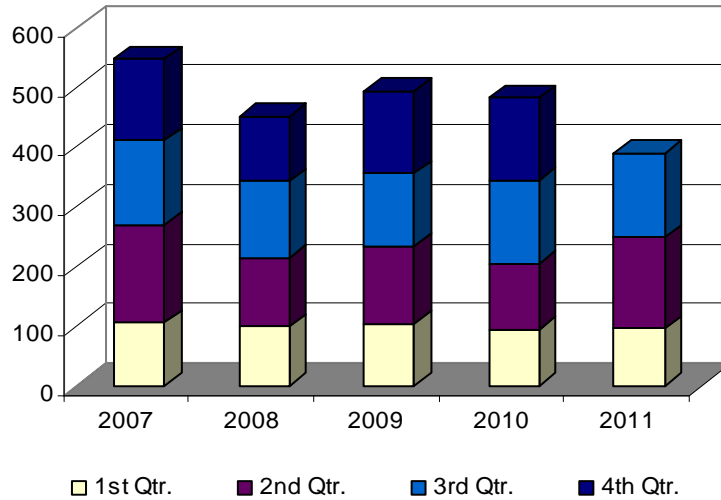
| Fire Responses | | | | |
|----------------|----------|----------|----------|----------|
| Year | 1st Qtr. | 2nd Qtr. | 3rd Qtr. | 4th Qtr. |
| 2007 | 138 | 109 | 92 | 151 |
| 2008 | 126 | 89 | 113 | 160 |
| 2009 | 226 | 141 | 116 | 108 |
| 2010 | 123 | 99 | 103 | 114 |
| 2011 | 96 | 86 | 111 | |

| EMS Responses | | | | |
|---------------|----------|----------|----------|----------|
| Year | 1st Qtr. | 2nd Qtr. | 3rd Qtr. | 4th Qtr. |
| 2007 | 986 | 1,103 | 1,214 | 1,125 |
| 2008 | 1,124 | 1,148 | 1,188 | 1,069 |
| 2009 | 1,065 | 1,108 | 1,188 | 1,006 |
| 2010 | 1,130 | 1,056 | 1,173 | 1,203 |
| 2011 | 1,195 | 1,350 | 1,415 | |

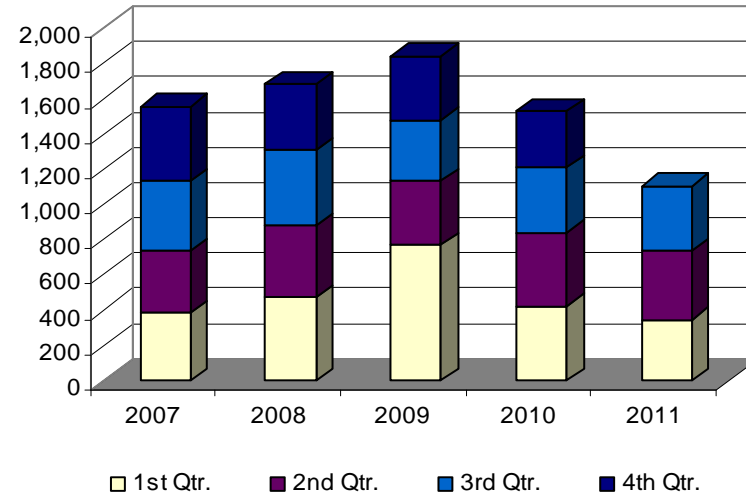
Comment: Rescue responses remain consistent compared to last year with the exception of in the number of responses in the second quarter due to the severe flooding in April and May. Other responses are down by 51, compared with 2010.

Fire Department Annual Calls for Service

Rescue Responses



Other Responses



Rescue Responses

| Year | 1st Qtr. | 2nd Qtr. | 3rd Qtr. | 4th Qtr. |
|------|----------|----------|----------|----------|
| 2007 | 105 | 164 | 141 | 136 |
| 2008 | 98 | 116 | 128 | 109 |
| 2009 | 104 | 129 | 122 | 138 |
| 2010 | 94 | 111 | 139 | 138 |
| 2011 | 95 | 153 | 141 | 136 |

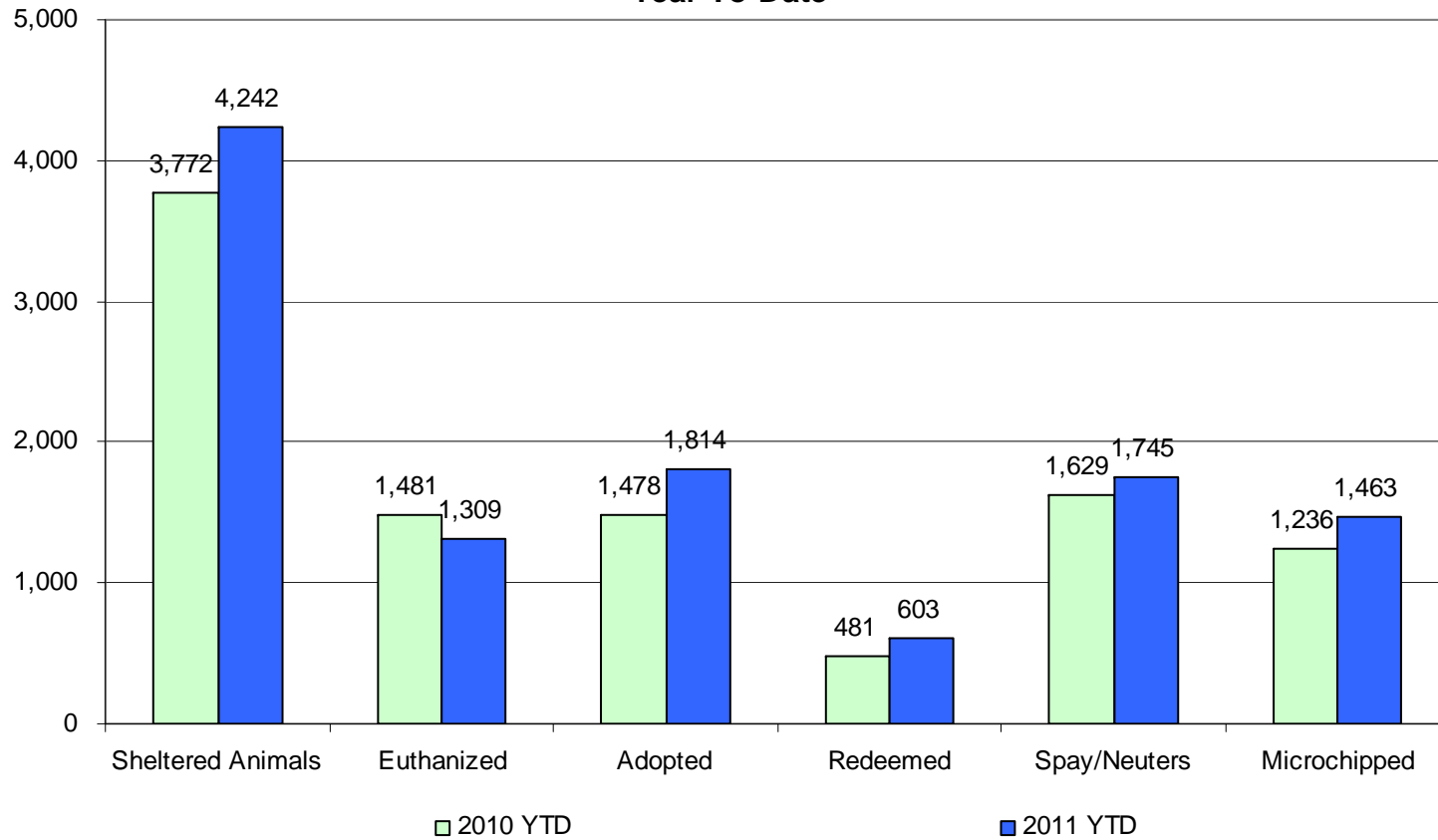
Other Responses*

| Year | 1st Qtr. | 2nd Qtr. | 3rd Qtr. | 4th Qtr. |
|------|----------|----------|----------|----------|
| 2007 | 386 | 352 | 395 | 424 |
| 2008 | 472 | 408 | 430 | 370 |
| 2009 | 770 | 363 | 343 | 366 |
| 2010 | 420 | 418 | 369 | 321 |
| 2011 | 343 | 393 | 367 | 321 |

*Other responses consist of services calls, unknown substances, smoke in the area, smoke checks, vehicle accidents with no injury or entrapment, burning complaints, non-reportable haz-mats, or to assist a person.

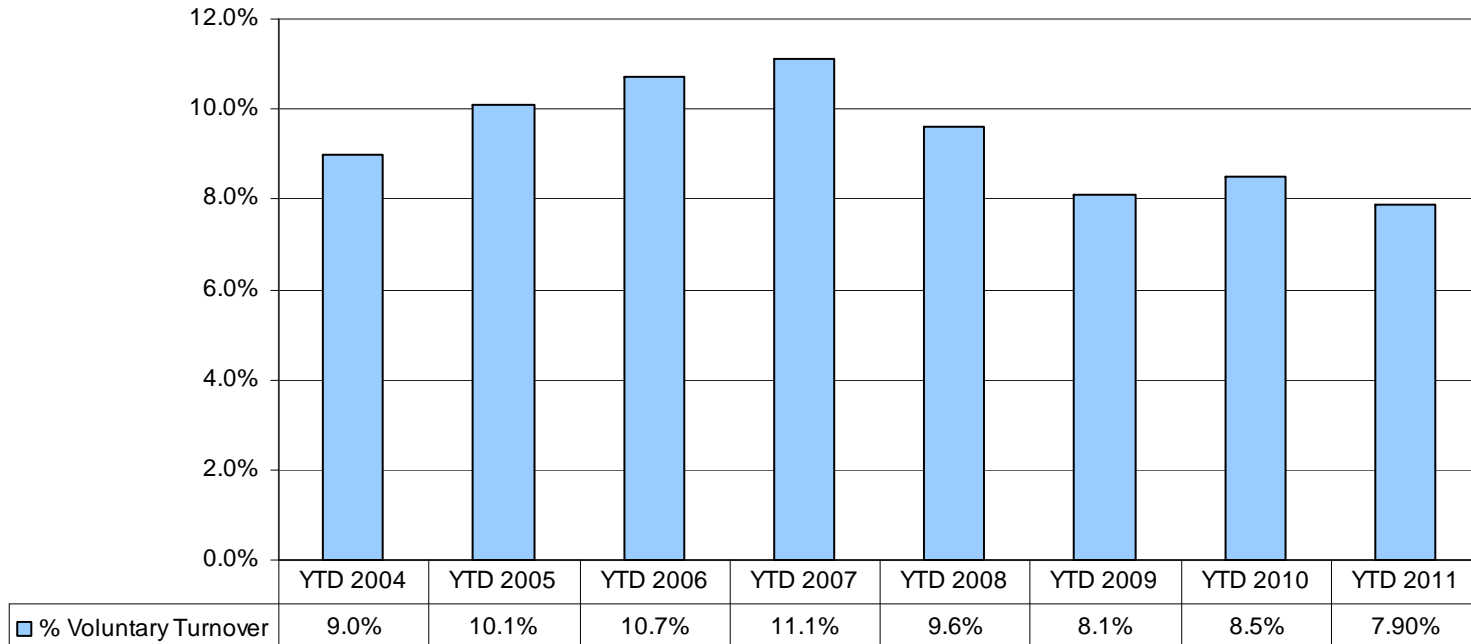
Comment: This is a breakdown of the animals that enter the shelter system and their ultimate disposition status.

Animal Services Population Details Year-To-Date



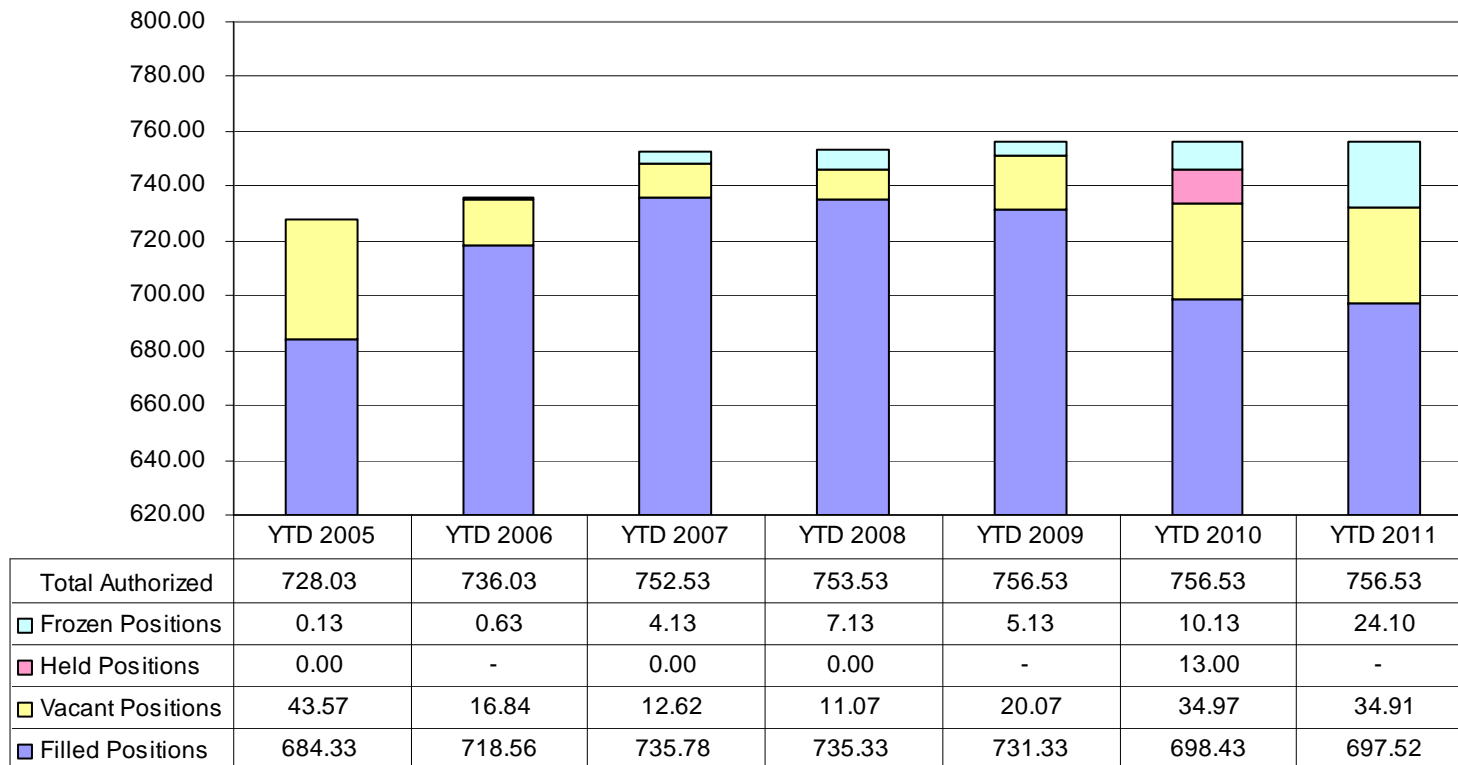
Comment: This chart reflects the percentage of employees who have voluntarily resigned within the year.

Percent of Voluntary Personnel Turnover



Comment: In addition to freezing 24.1 FTE's this year, the number of current vacancies were up slightly in FTE's compared to 2010.

Number of Authorized Employee Positions Compared to Positions Filled (Expressed in FTE's)



Due to 29.00 FTE's being added in the 2005 Adopted Budget, the vacant positions number would be higher than normal because of the hiring timeframe.

Budget Amendment Report (Approved by City Council) - Third Quarter 2011

Heading Definitions:

FUND: Funding Source

DESCRIPTION: Budget Amendment Number and Description

ADOPTED BUDGET: Original Adopted Expense Budget

RE-BUDGETS: Re-appropriations from the previous fiscal year.

REVENUES: Budget Amendments that are funded from a source of funds other than Fund Balance.

FUND BALANCE: Budget Amendments coming from Fund Balance.

AMENDED BUDGET: Amended Expense Budget

Summary by Funding Source

| FUND | ADOPTED BUDGET | RE-BUDGETS | REVENUES | FUND BALANCE | AMENDED BUDGET |
|---------------------------------------------|--------------------|-------------------|------------------|------------------|--------------------|
| 1010 General | 33,885,500 | 940,985 | 364,994 | 500,000 | 35,691,479 |
| 2100 Street | 4,390,000 | 599,393 | - | 346,000 | 5,335,393 |
| 2130 Parking | 1,065,100 | 61,112 | - | 4,000 | 1,130,212 |
| 2180 Community Development Block Grant | 695,800 | 612,899 | (89,814) | - | 1,218,885 |
| 2230 Special State Grants | - | 55,399 | - | - | 55,399 |
| 2240 Energy Block Grant | - | 460,713 | - | - | 460,713 |
| 2250 Parks Development | 2,424,600 | 4,338,063 | 4,896 | 22,000 | 6,789,559 |
| 2300 Impact Fee | 1,260,000 | 6,411,656 | - | - | 7,671,656 |
| 2930 Drug Law Enforcement | 494,000 | 31,650 | - | - | 525,650 |
| 3360 Fire Bond | 424,800 | - | - | - | 424,800 |
| 3370 TIF Bond | 63,700 | - | - | 50,687 | 114,387 |
| 3440 Sales Tax Bond | 15,373,700 | - | - | - | 15,373,700 |
| 4270 Replacement & Disaster Recovery | 45,100 | 136,797 | 875,000 | 125,000 | 1,181,897 |
| 4470 Sales Tax Capital Improvements | 6,390,000 | 9,045,175 | 3,468,690 | - | 18,903,865 |
| 4480 Wastewater System Improvements Project | - | 3,046,222 | - | - | 3,046,222 |
| 4520 Sales Tax Construction Bond | 6,000 | 15,487,882 | - | - | 15,493,882 |
| 5400 Water & Sewer | 30,901,000 | 13,695,918 | 3,882,202 | 134,930 | 48,614,050 |
| 5500 Solid Waste | 9,208,300 | 1,748,821 | - | 50,000 | 11,007,121 |
| 5550 Airport | 770,800 | 830,141 | 395,472 | 39,900 | 2,036,313 |
| 5600 Town Center | 702,700 | - | - | - | 702,700 |
| 6800 Police Pension | 1,692,800 | - | - | - | 1,692,800 |
| 6810 Fire Pension | 1,480,400 | - | - | - | 1,480,400 |
| 9700 Shop | 7,239,900 | 1,337,962 | 163,449 | 75,150 | 8,816,461 |
| Grand Total | 118,514,200 | 58,840,788 | 9,064,889 | 1,347,667 | 187,767,544 |

Budget Amendment Detail Report - Third Quarter 2011

| FUND | DESCRIPTION | ADOPTED BUDGET | RE-BUDGETS | REVENUES | FUND BALANCE | AMENDED BUDGET |
|-----------------------------------------------|----------------------------------|-------------------|----------------|-----------------|----------------|-------------------|
| 1010 General | | 33,885,500 | 940,985 | 19,864 | 390,000 | 35,236,349 |
| | 11-000 - Original Adopted Budget | 33,885,500 | - | - | - | 33,885,500 |
| | 11-015 - Donation Emp Banquet | - | - | 300 | - | 300 |
| | 11-020 - Donation Emp Banquet | - | - | 100 | - | 100 |
| | 11-044 - Service Awards | - | - | - | 390,000 | 390,000 |
| | 11-074 - 2010 Dona Ani Svcs | - | - | 17,464 | - | 17,464 |
| | 11-129 - Life Vest-Walmart | - | - | 2,000 | - | 2,000 |
| | 11-B00 - Prior Reappropriations | - | 940,985 | - | - | 940,985 |
| | 11-M01 - April July PP Adjs | - | - | - | - | - |
| 2100 Street | | 4,390,000 | 599,393 | - | 346,000 | 5,335,393 |
| | 11-000 - Original Adopted Budget | 4,390,000 | - | - | - | 4,390,000 |
| | 11-044 - Service Awards | - | - | - | 60,000 | 60,000 |
| | 11-133 - Phase II Radio Project | - | - | - | 286,000 | 286,000 |
| | 11-B00 - Prior Reappropriations | - | 599,393 | - | - | 599,393 |
| | 11-M01 - April July PP Adjs | - | - | - | - | - |
| 2130 Parking | | 1,065,100 | 61,112 | - | 4,000 | 1,130,212 |
| | 11-000 - Original Adopted Budget | 1,065,100 | - | - | - | 1,065,100 |
| | 11-044 - Service Awards | - | - | - | 4,000 | 4,000 |
| | 11-B00 - Prior Reappropriations | - | 61,112 | - | - | 61,112 |
| | 11-M01 - April July PP Adjs | - | - | - | - | - |
| 2180 Community Development Block Grant | | 695,800 | 612,899 | (90,292) | - | 1,218,407 |
| | 11-000 - Original Adopted Budget | 695,800 | - | - | - | 695,800 |
| | 11-097 - Ranger's Pantry Donate | - | - | 1,619 | - | 1,619 |
| | 11-130 - Annual Grant Amount | - | - | (91,911) | - | (91,911) |
| | 11-B00 - Prior Reappropriations | - | 612,899 | - | - | 612,899 |
| | 11-M01 - April July PP Adjs | - | - | - | - | - |
| 2230 Special State Grants | | - | 55,399 | - | - | 55,399 |
| | 11-B00 - Prior Reappropriations | - | 55,399 | - | - | 55,399 |
| 2240 Energy Block Grant | | - | 460,713 | - | - | 460,713 |
| | 11-B00 - Prior Reappropriations | - | 460,713 | - | - | 460,713 |

Budget Amendment Detail Report - Third Quarter 2011

| FUND | DESCRIPTION | ADOPTED BUDGET | RE-BUDGETS | REVENUES | FUND BALANCE | AMENDED BUDGET |
|-------------------------------------------------|----------------------------------|-------------------|------------------|--------------|---------------|-------------------|
| 2250 Parks Development | | 2,424,600 | 4,338,063 | 4,896 | 22,000 | 6,789,559 |
| | 11-000 - Original Adopted Budget | 2,424,600 | - | - | - | 2,424,600 |
| | 11-017 - Niokaska Restoration | - | - | 4,896 | - | 4,896 |
| | 11-044 - Service Awards | - | - | - | 22,000 | 22,000 |
| | 11-B00 - Prior Reappropriations | - | 4,338,063 | - | - | 4,338,063 |
| | 11-M01 - April July PP Adjs | - | - | - | - | - |
| 2300 Impact Fee | | 1,260,000 | 6,411,656 | - | - | 7,671,656 |
| | 11-000 - Original Adopted Budget | 1,260,000 | - | - | - | 1,260,000 |
| | 11-B00 - Prior Reappropriations | - | 6,411,656 | - | - | 6,411,656 |
| 2930 Drug Law Enforcement | | 494,000 | 31,650 | - | - | 525,650 |
| | 11-000 - Original Adopted Budget | 494,000 | - | - | - | 494,000 |
| | 11-B00 - Prior Reappropriations | - | 31,650 | - | - | 31,650 |
| | 11-M01 - April July PP Adjs | - | - | - | - | - |
| 3360 Fire Bond | | 424,800 | - | - | - | 424,800 |
| | 11-000 - Original Adopted Budget | 424,800 | - | - | - | 424,800 |
| 3370 TIF Bond | | 63,700 | - | - | 50,687 | 114,387 |
| | 11-000 - Original Adopted Budget | 63,700 | - | - | - | 63,700 |
| | 11-033 - Bond Redemption | - | - | - | 50,687 | 50,687 |
| 3440 Sales Tax Bond | | 15,373,700 | - | - | - | 15,373,700 |
| | 11-000 - Original Adopted Budget | 15,373,700 | - | - | - | 15,373,700 |
| 4270 Replacement & Disaster Recovery | | 45,100 | 136,797 | - | - | 181,897 |
| | 11-000 - Original Adopted Budget | 45,100 | - | - | - | 45,100 |
| | 11-B00 - Prior Reappropriations | - | 136,797 | - | - | 136,797 |

Budget Amendment Detail Report - Third Quarter 2011

| FUND | DESCRIPTION | ADOPTED BUDGET | RE-BUDGETS | REVENUES | FUND BALANCE | AMENDED BUDGET |
|-------------------------------------------------|----------------------------------|-------------------|-------------------|------------------|----------------|-------------------|
| 4470 Sales Tax Capital Improvements | | 6,390,000 | 9,045,175 | 3,176,361 | - | 18,611,536 |
| | 11-000 - Original Adopted Budget | 6,390,000 | - | - | - | 6,390,000 |
| | 11-005 - Fay Econ Dev Corridor | - | - | 296,682 | - | 296,682 |
| | 11-134 - Cato Springs Road | - | - | 2,879,679 | - | 2,879,679 |
| | 11-B00 - Prior Reappropriations | - | 9,045,175 | - | - | 9,045,175 |
| 4480 Wastewater System Improvements Proj | | - | 3,046,222 | - | - | 3,046,222 |
| | 11-B00 - Prior Reappropriations | - | 3,046,222 | - | - | 3,046,222 |
| 4520 Sales Tax Construction Bond | | 6,000 | 15,487,882 | - | - | 15,493,882 |
| | 11-000 - Original Adopted Budget | 6,000 | - | - | - | 6,000 |
| | 11-B00 - Prior Reappropriations | - | 15,487,882 | - | - | 15,487,882 |
| 5400 Water & Sewer | | 30,901,000 | 13,695,918 | 3,882,202 | 120,000 | 48,599,120 |
| | 11-000 - Original Adopted Budget | 30,901,000 | - | - | - | 30,901,000 |
| | 11-004 - W&S Ops Efficiency | - | - | - | 35,000 | 35,000 |
| | 11-012 - Power/Stone Mtn Pump | - | - | 45,751 | - | 45,751 |
| | 11-044 - Service Awards | - | - | - | 85,000 | 85,000 |
| | 11-058 - Impact Fee Funds | - | - | 1,110,331 | - | 1,110,331 |
| | 11-079 - HWY 265/Garney | - | - | 2,241,120 | - | 2,241,120 |
| | 11-089 - STAG Grant/Elkins Sew | - | - | 485,000 | - | 485,000 |
| | 11-B00 - Prior Reappropriations | - | 13,695,918 | - | - | 13,695,918 |
| | 11-M01 - April July PP Adjs | - | - | - | - | - |
| 5500 Solid Waste | | 9,208,300 | 1,748,821 | - | 50,000 | 11,007,121 |
| | 11-000 - Original Adopted Budget | 9,208,300 | - | - | - | 9,208,300 |
| | 11-044 - Service Awards | - | - | - | 50,000 | 50,000 |
| | 11-B00 - Prior Reappropriations | - | 1,748,821 | - | - | 1,748,821 |
| | 11-M01 - April July PP Adjs | - | - | - | - | - |
| 5550 Airport | | 770,800 | 830,141 | 144,000 | 39,900 | 1,784,841 |
| | 11-000 - Original Adopted Budget | 770,800 | - | - | - | 770,800 |
| | 11-044 - Service Awards | - | - | - | 3,900 | 3,900 |
| | 11-099 - Airport Security | - | - | 144,000 | 36,000 | 180,000 |
| | 11-B00 - Prior Reappropriations | - | 830,141 | - | - | 830,141 |
| | 11-M01 - April July PP Adjs | - | - | - | - | - |

Budget Amendment Detail Report - Third Quarter 2011

| FUND | DESCRIPTION | ADOPTED BUDGET | RE-BUDGETS | REVENUES | FUND BALANCE | AMENDED BUDGET |
|----------------------------|----------------------------------|--------------------|-------------------|------------------|------------------|--------------------|
| 5600 Town Center | | 702,700 | - | - | - | 702,700 |
| | 11-000 - Original Adopted Budget | 702,700 | - | - | - | 702,700 |
| 6800 Police Pension | | 1,692,800 | - | - | - | 1,692,800 |
| | 11-000 - Original Adopted Budget | 1,692,800 | - | - | - | 1,692,800 |
| 6810 Fire Pension | | 1,480,400 | - | - | - | 1,480,400 |
| | 11-000 - Original Adopted Budget | 1,480,400 | - | - | - | 1,480,400 |
| 9700 Shop | | 7,239,900 | 1,337,962 | 160,352 | 75,150 | 8,813,364 |
| | 11-000 - Original Adopted Budget | 7,239,900 | - | - | - | 7,239,900 |
| | 11-006 - Tractor Solar Drying | - | - | 72,675 | - | 72,675 |
| | 11-007 - Tax on Spreader-Drying | - | - | 1,850 | - | 1,850 |
| | 11-008 - Sales Tax Walking Tr | - | - | 4,450 | - | 4,450 |
| | 11-023 - Unit 9059 Replacement | - | - | - | 20,500 | 20,500 |
| | 11-044 - Service Awards | - | - | - | 15,000 | 15,000 |
| | 11-047 - Replace Unit 459 | - | - | - | 6,500 | 6,500 |
| | 11-080 - Manure Conveyors | - | - | 44,040 | - | 44,040 |
| | 11-081 - Top Dresser for Parks | - | - | 5,793 | 14,107 | 19,900 |
| | 11-082 - Replace Unit 2025 | - | - | 16,733 | 7,867 | 24,600 |
| | 11-083 - Purchase of Unit #1127 | - | - | 3,640 | 8,284 | 11,924 |
| | 11-084 - Replace Unit #2018 | - | - | 11,171 | 2,892 | 14,063 |
| | 11-B00 - Prior Reappropriations | - | 1,337,962 | - | - | 1,337,962 |
| | 11-M01 - April July PP Adjs | - | - | - | - | - |
| Grand Total | | 118,514,200 | 58,840,788 | 7,297,383 | 1,097,737 | 185,750,108 |