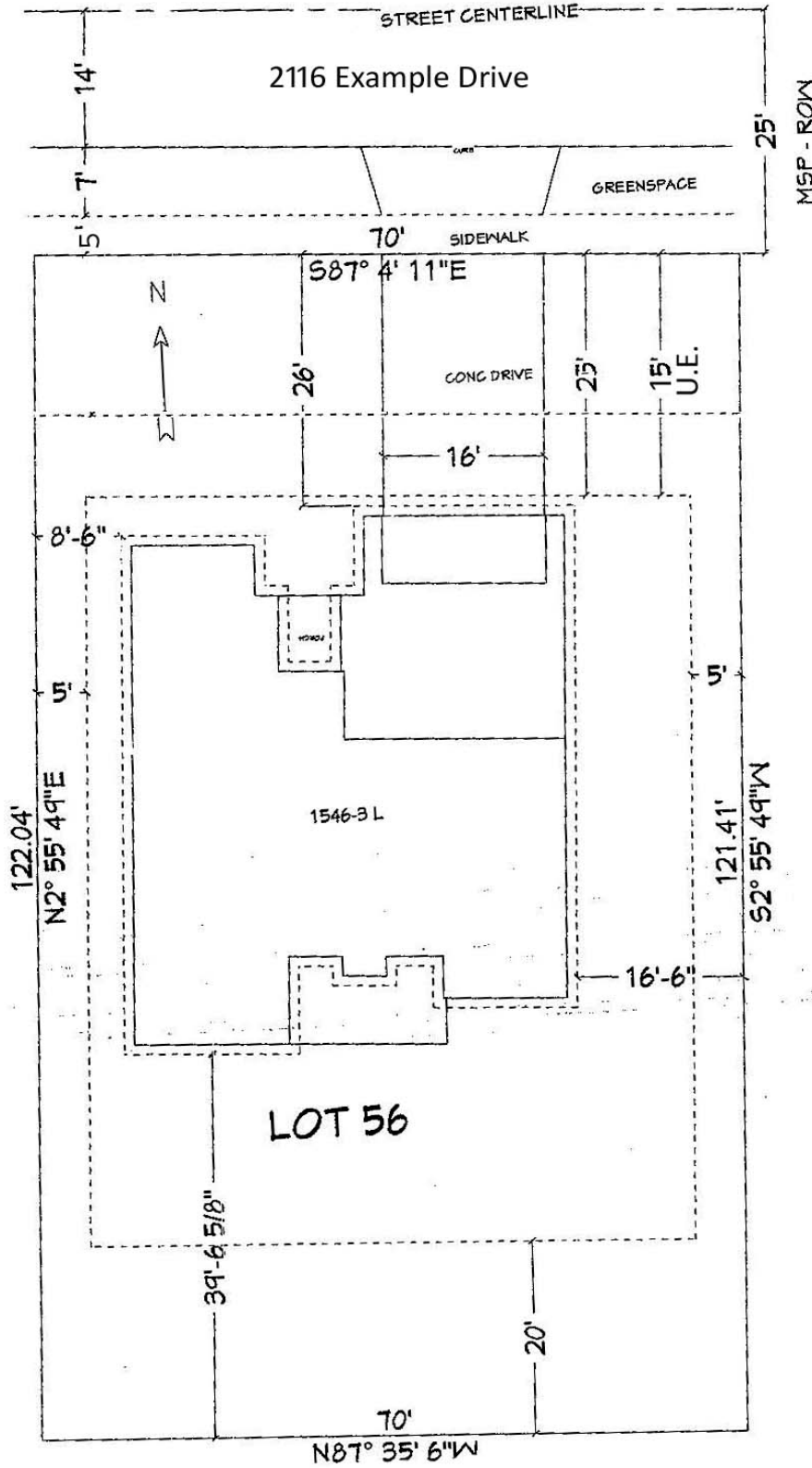


TYPICAL SITE PLAN EXAMPLE



2116 Example Drive
Nice Place Subdivision
Lot 56

Scale 1" = 20'



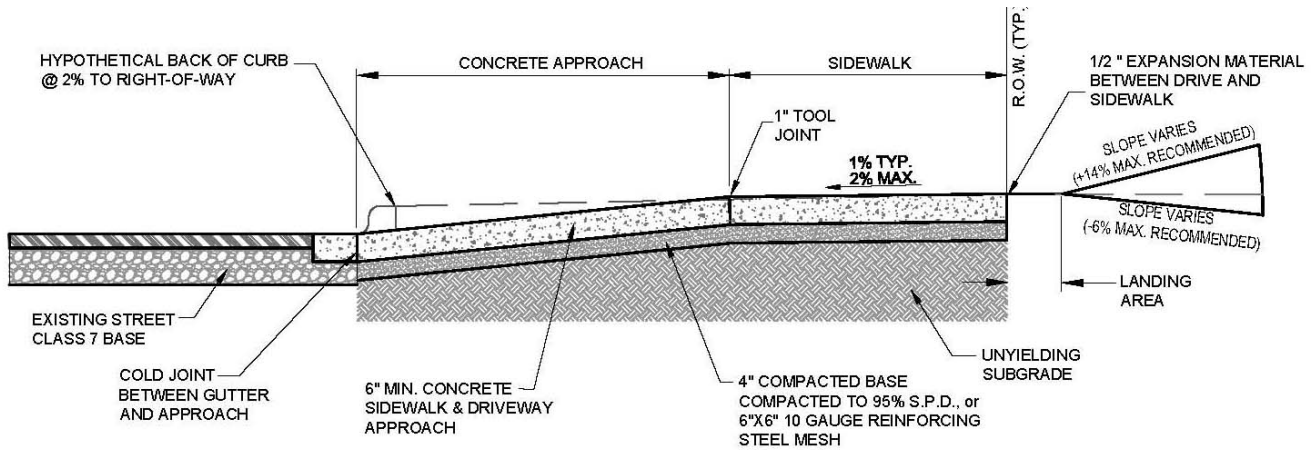
Zoning Setbacks:

- Front Setback 25'
- Side Setback 5'
- Rear Setback 20'

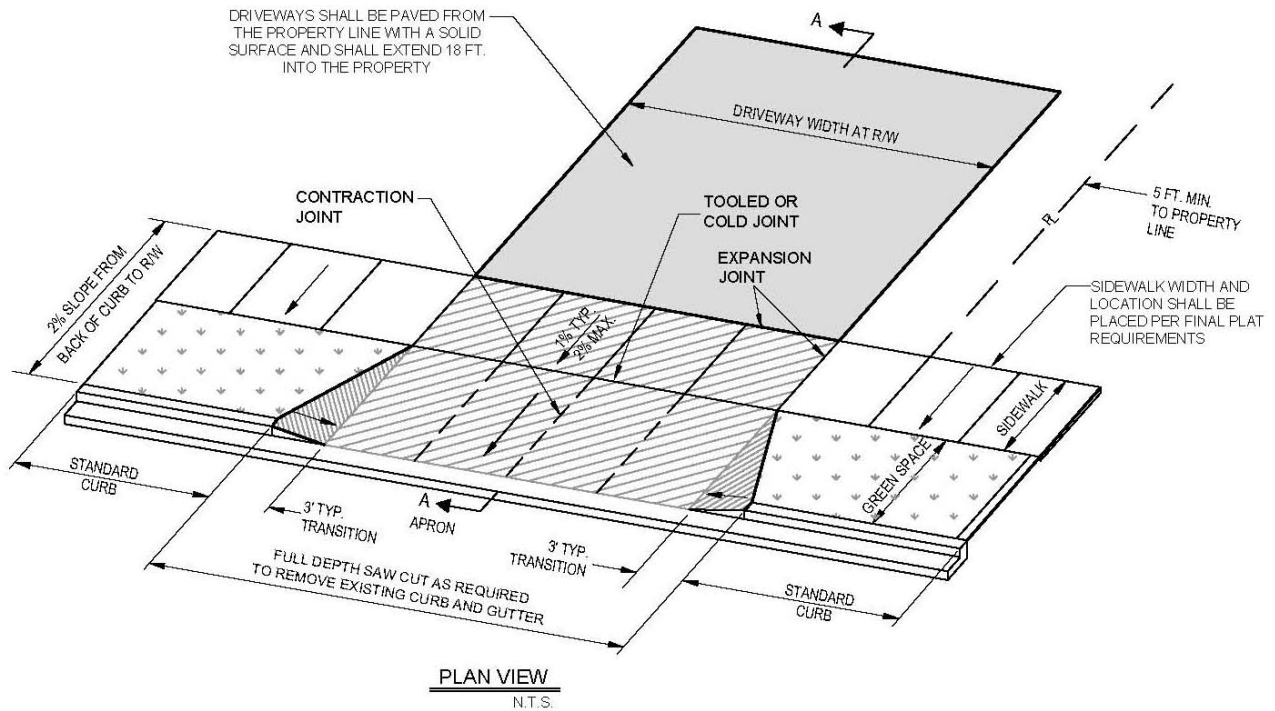
Proposed Setbacks:

- Front Setback 26'
- Side Setback 8'-6"
- Side Setback 16'-6"
- Rear Setback 39'-6 5/8"

TYPICAL DRIVEWAY DETAILS



LOT WIDTH MAXIMUM	DRIVEWAY WIDTH
70 FEET OR MORE	24 FEET
50 FEET TO 69 FEET	20 FEET
LESS THAN 50 FEET	18 FEET



NOTES

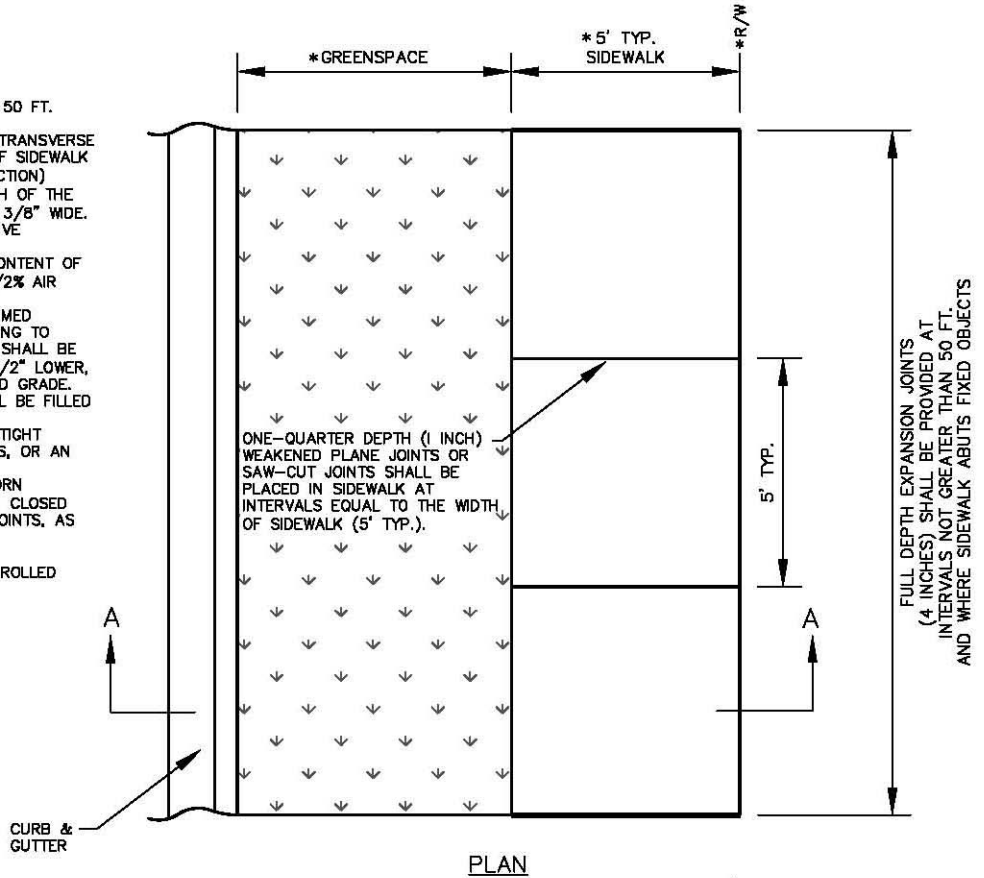
- FULL DEPTH EXPANSION JOINTS (SIX INCHES) SHALL BE PROVIDED AT THE EDGE OF THE SIDEWALK OPPOSITE THE STREET AND AT THE EDGE OF DRIVEWAY AS SHOWN ABOVE. EXPANSION MATERIAL SHALL BE ASPHALT IMPREGNATED FIBERBOARD OR APPROVED EQUAL. (NO WOOD)
- CONCRETE TO BE SAW CUT OR PLACE A TOOL JOINT AT THE CENTER OF DRIVE AND SEALED. IF POSSIBLE CONTRACTOR SHALL TRY TO ALIGN THE JOINT AT THE CENTER OF THE DRIVE WITH THE A JOINT IN THE ADJACENT SIDEWALK.
- ALL CONCRETE DRIVEWAYS AND SIDEWALKS SHALL BE CONSTRUCTED OF A PORTLAND CEMENT CONCRETE MIXTURE WHICH WILL PRODUCE A CONCRETE OF A COMPRESSIVE STRENGTH OF 3500 P.S.I. AFTER 28 DAYS SET UNDER STANDARD LABORATORY METHODS.
- ALL SIDEWALKS REQUIRE A CONCRETE CURING COMPOUND, SUCH AS SEALTIGHT 1600-WHITE MANUFACTURED BY W.R. MEADOWS, OR AN APPROVED EQUAL.
- ALL SIDEWALKS AND DRIVEWAY APPROACHES SHALL BE CONSTRUCTED WITH A BROOM FINISH. TEXTURED, STAMPED, OR EXPOSED AGGREGATE CONCRETE IS **NOT** ALLOWED WITHIN STREET RIGHT OF WAY.
- ALL SIDEWALKS AND CURB CUTS FOR DRIVEWAY APPROACHES REQUIRE AN INSPECTION PRIOR TO AND AFTER CONCRETE PLACEMENT.**
- IF THE EXISTING GUTTER PAN IS DAMAGED OR DAMAGED DURING CURB REMOVAL, REFER TO DETAIL DW1A AND REMOVE FROM JOINT TO JOINT WITHIN THE LIMITS OF SAW CUT.

TYPICAL SIDEWALK DETAILS

SIDEWALK CONSTRUCTION NOTES:

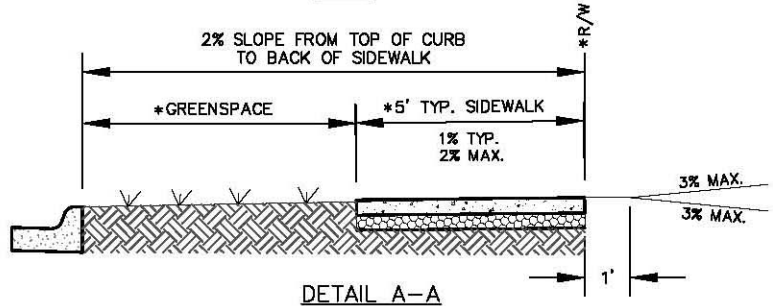
1. EXPANSION MATERIAL SHALL BE REQUIRED AT 50 FT. MAXIMUM SPACING.
2. SIDEWALK SHALL HAVE TOOLED OR SAW-CUT TRANSVERSE JOINTS AT INTERVALS EQUAL TO THE WIDTH OF SIDEWALK (5' TYP.). THESE WEAKENED PLANE (CONTRACTION) JOINTS SHALL BE CONSTRUCTED TO 1/4 DEPTH OF THE SIDEWALK THICKNESS AND SHALL BE 1/8" TO 3/8" WIDE.
3. CONCRETE SHALL HAVE A MINIMUM COMPRESSIVE STRENGTH OF 3500 p.s.i.
4. CONCRETE SHALL HAVE A MINIMUM CEMENT CONTENT OF 5 1/2 BAGS per Cu. Yd. WITH 5 1/2% ± 1 1/2% AIR ENTRAINMENT.
5. EXPANSION JOINT MATERIAL SHALL BE PREFORMED ASPHALT IMPREGNATED FIBERBOARD CONFORMING TO AASHTO M-213. EXPANSION JOINT MATERIAL SHALL BE LEFT 1/2" LOWER THAN GRADE OR TRIMMED 1/2" LOWER, AND FILLED WITH SILICONE SEALER TO FINISHED GRADE.
6. ALL COLD JOINTS AND SAW-CUT JOINTS SHALL BE FILLED TO FINISHED GRADE WITH JOINT SEALANT.
7. CONCRETE CURING COMPOUND SHALL BE SEALTIGHT 1600-WHITE MANUFACTURED BY W.R. MEADOWS, OR AN APPROVED EQUAL.
8. CONCRETE JOINT SEALANT SHALL BE SONNEBORN "SONOLASTIC SLI" OR AN APPROVED EQUAL. CLOSED CELL BACKER ROD SHALL BE USED IN DEEP JOINTS, AS NEEDED, ACCORDING TO THE MANUFACTURER'S INSTRUCTIONS.
9. ALL SIDEWALKS SHALL HAVE ONE-HALF INCH ROLLED EDGES AND A BROOMED FINISH.

* CONFIRM ALL DIMENSIONS FOR GREENSPACE, SIDEWALK, AND RIGHT-OF-WAY, WITH THE APPROVED PLAT.

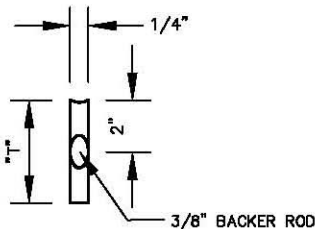


PLAN

ALL SIDEWALKS REQUIRE INSPECTION BEFORE AND AFTER CONCRETE PLACEMENT. CONTACT CHUCK RUTHERFORD AT 575-8291 TO SCHEDULE AN INSPECTION. SIDEWALK WILL BE CHECKED FOR ADA REQUIREMENTS & WORKMANSHIP.

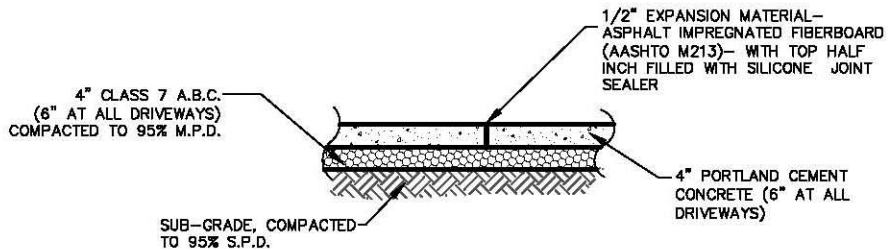


DETAIL A-A



"T" = 1/4 SLAB THICKNESS + 1/2"

JOINT SEALANT DETAIL



ELEVATION